

DAMEN

FCS 4008 Crewboat

Full specification

FCS 4008

About this vessel type

Damen's FCS range provide safe and comfortable crew transport based on the improved seakeeping behaviour that comes courtesy of the Axe Bow.

The main focus of the FCS 4008 is crew transfer, but thanks to the spacious aft deck it is also capable of carrying deck cargo. It can also handle a range of equipment like cranes, fire-fighting apparatus and rescue craft.

Having served on the seas for decades, the Damen Fast Crew Supply Vessel designs are of proven reliability. The basis for the range is a balance between comfort, speed, operability, efficiency and flexibility.

The FCS creates a fast, reliable connection between port and offshore operations. The Sea Axe hull reduces demands on crew. Propulsion options allow operational requirements to be matched with efficiency.



DAMEN FCS 4008 CREW TRANSFER VESSEL

Suitable for offshore crew transfers



(photo taken when new)

Built 2017

Dimensions 41.20 x 8.70 x 3.90 m

Draft 3.00 m

Steel hull, aluminium superstructure

Range 1200 nm at maximum speed

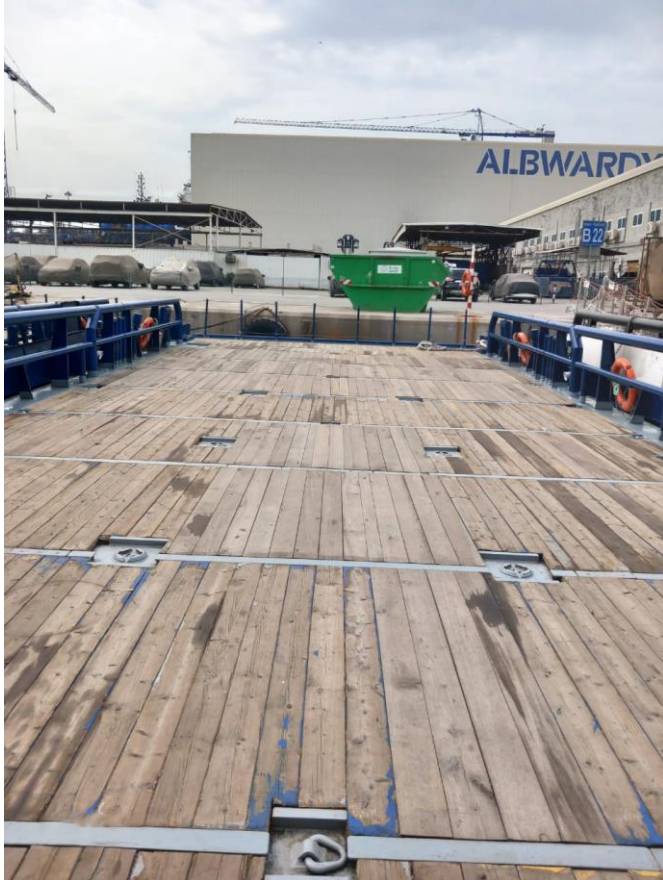
DAMEN FCS 4008 CREW TRANSFER VESSEL

Bridge deck



DAMEN FCS 4008 CREW TRANSFER VESSEL

Aft deck



Free deck area 140 m²

Deck strength 2.5 tonnes/m²

Wooden deck cover partly renewed mid 2023.

DAMEN FCS 4008 CREW TRANSFER VESSEL

Crane



HEILA HLM 20-S3, fully foldable deck crane.

Capacities:

4660 kgs at 2.79 m

2890 kgs at 4.79 m

1980 kgs at 6.74 m

1480 kgs at 8.70 m

1200 kgs at 10.56 m

Completely overhauled mid 2023 including load test.

DAMEN FCS 4008 CREW TRANSFER VESSEL

Anchor winch and wheelhouse



DAMEN FCS 4008 CREW TRANSFER VESSEL

Bridge



Navigation and communication according to class regulations.

Bureau Veritas I ✕Hull •MACH Crew Boat Sea Area 4

All windows are provided with sunscreens.

DAMEN FCS 4008 CREW TRANSFER VESSEL

Heavy duty rubber fenders and tyres



DAMEN FCS 4008 CREW TRANSFER VESSEL

Passenger area



Passenger area on main deck with seats for 90 persons.

DAMEN FCS 4008 CREW TRANSFER VESSEL

Passenger area



DAMEN FCS 4008 CREW TRANSFER VESSEL

Galley below main deck



DAMEN FCS 4008 CREW TRANSFER VESSEL

Mess-room below main deck



DAMEN FCS 4008 CREW TRANSFER VESSEL

Crew accommodation below main deck



DAMEN FCS 4008 CREW TRANSFER VESSEL

Propulsion



Four fixed pitch propellers.

Bow thruster 120 kW, electrically driven.

DAMEN FCS 4008 CREW TRANSFER VESSEL

Engine room



4x Caterpillar, type C32 TTA, 5798 hp total

Top-end overhaul mid 2023.

Speed \pm 26 knots

4x Reintjes, type WVS 730/1 L

Engine room ventilation:

2x 15.500 m³/hr each

DAMEN FCS 4008 CREW TRANSFER VESSEL

Main engines



DAMEN FCS 4008 CREW TRANSFER VESSEL

Generators



2x Caterpillar C 4.4, each 99.0 ekW – 123.0 kVA

Complete major overhaul mid 2023.

DAMEN FCS 4008 CREW TRANSFER VESSEL

Tank capacities

Content	Indication on tank	Net volume (m3)
Fresh water cargo tank	3 FW	20.95
Sewage tank CL	5 SE	1.89
Fresh water tank CL	6 FW	13.38
Fuel oil tank SB	7 FO	30.92
Fuel oil tank PS	8 FO	30.92
Fuel oil day tank SB	9 FO	2.65
Fuel oil day tank PS	10 FO	2.65
Bilge water tank	11 BW	1.02
Dirty oil tank	12 DO	1.02

DAMEN FCS 4008 CREW TRANSFER VESSEL

Fuel and water separator



DAMEN FCS 4008 CREW TRANSFER VESSEL

Air-conditioning



Air-conditioning compressor unit installed.

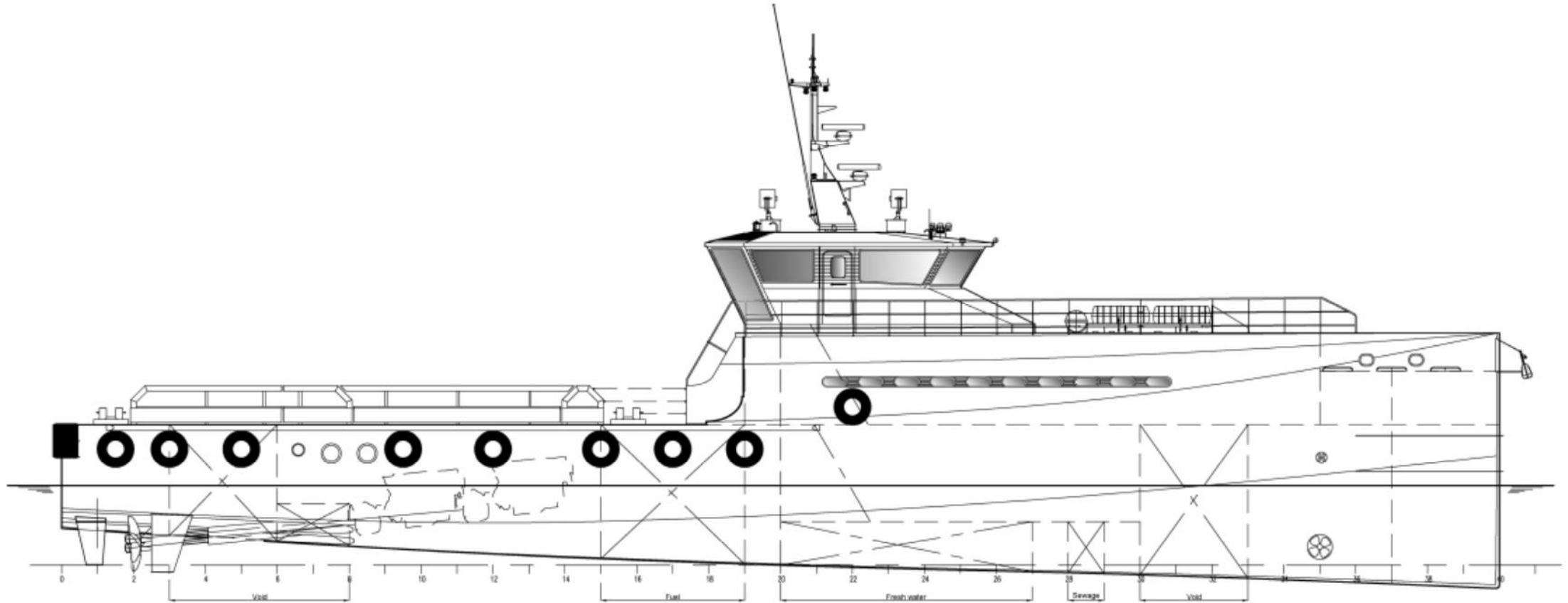
DAMEN FCS 4008 CREW TRANSFER VESSEL

Electrical switch boards



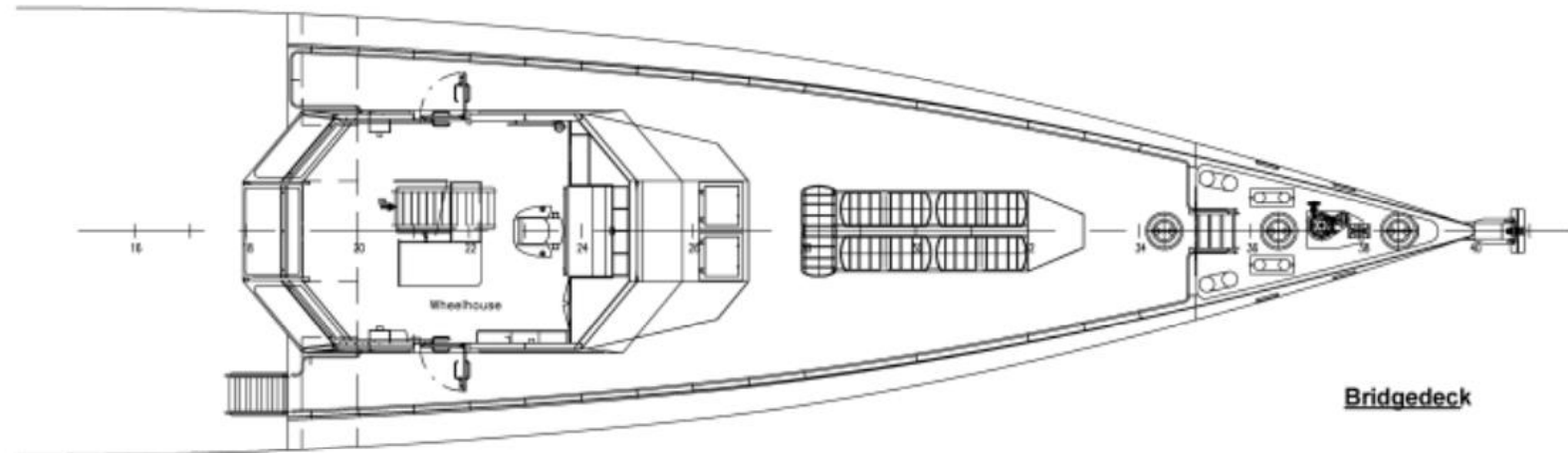
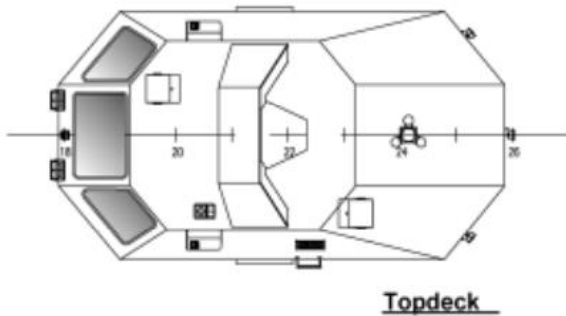
DAMEN FCS 4008 CREW TRANSFER VESSEL

Profile



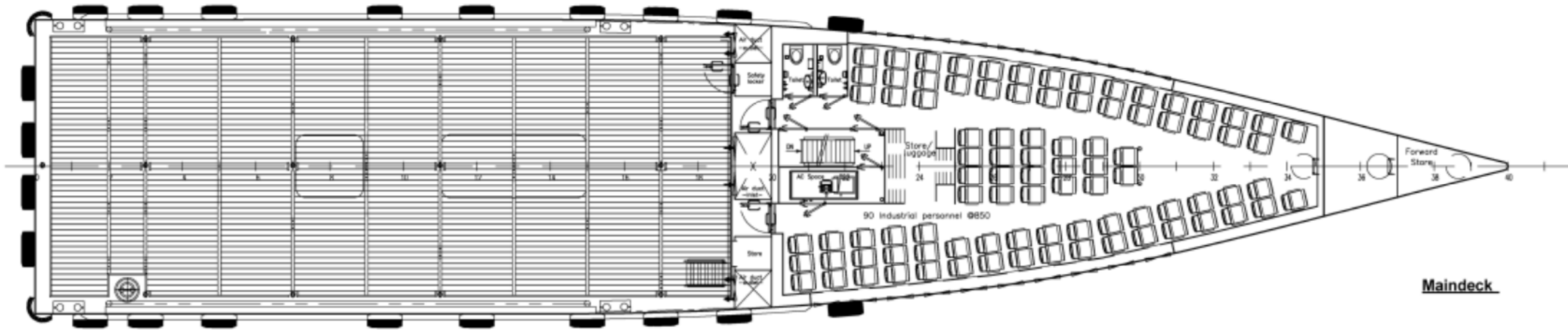
DAMEN FCS 4008 CREW TRANSFER VESSEL

Bridge deck and top deck



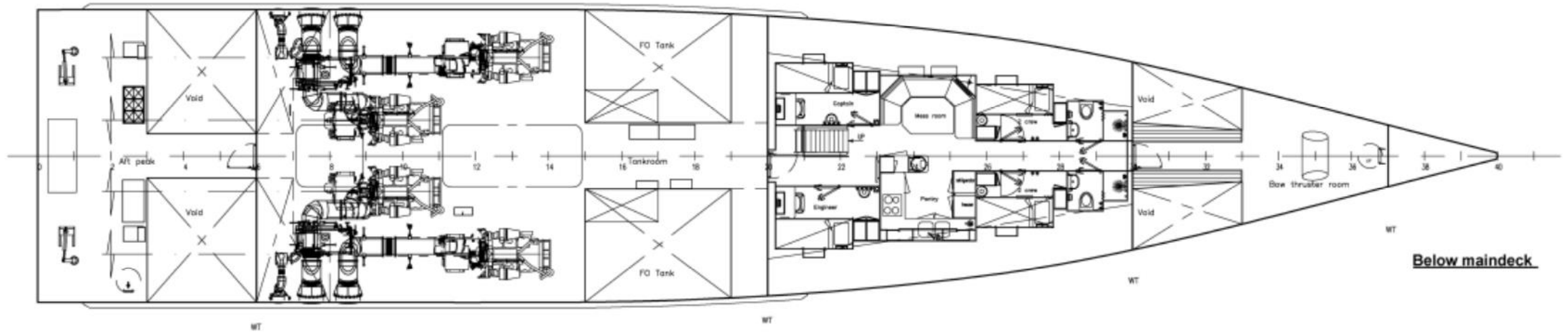
DAMEN FCS 4008 CREW TRANSFER VESSEL

Main deck



DAMEN FCS 4008 CREW TRANSFER VESSEL

Below main deck



DAMEN FCS 4008 CREW TRANSFER VESSEL

Special features

»» Linking sea and shore

The FCS creates a fast, reliable connection between port and offshore operations. The Sea Axe hull reduces demands on crew. Propulsion options allow operational requirements to be matched with efficiency.

»» We never compromise on safety

Damen never compromises on safety. Our Fast Crew Suppliers embody the highest safety standards. And although designed for speed and efficiency, they still have excellent seakeeping abilities thanks to our Sea Axe hull design.

»» Excellent visibility

Not only does the FCS have excellent visibility from the wheelhouse, passengers also benefit from having an optimal view due to large windows. Often technicians are not seafarers, so we have aimed to make the FCS as comfortable as possible.

»» Spacious deck, spacious accommodation

Large, flush and uncluttered decks are a major highlight of the FCS. And we have provided an optimised layout, featuring well-located operational compartments and spacious accommodation.



Our team



Michel Radjiman
Senior Sales Manager
Working with Damen Trading since 1997



Michiel Dijxhoorn
Sales Manager
Working with Damen since 2012



Petra Buskens
Sales Assistant
Working with Damen Trading since 1992





DAMEN