

River ferry suitable for river crossings of both passengers and vehicles.

Type	DAMEN Motor ferry 2106
Built	2010
Dimensions	25.60 / 15.60 x 9.20 / 6.00 x 1.55 m
Draft	± 1.00 m
Material	Steel both hull and superstructure
Max. vehicle weight	7 tons
Max. axle pressure	5 tons
Total load capacity	9 tons
Cargo capacity	For 1 truck (without trailer) or 2 cars with persons
Max. number of pax	25
Propulsion	2x thruster Holland Roerpropeller, type HRP 2111 DU (650 mm)
Main engines	2x Volvo Penta, type D7A-BTA (only 250 running hours)
Output	2x 174 hp at 1900 rpm
Anchors	2x anchor 90 kgs HHP each
Anchor winches	2x manual
Ramps	2x hydraulic
Fuel capacity	9700 ltrs
Accommodation	Heated accommodation and wheelhouse.
Nav./comm. equipment	As requested by class
Class	Bureau Veritas {I 5 Inland Navigation (0) Z Special Service Ferryboat •MC (expired)

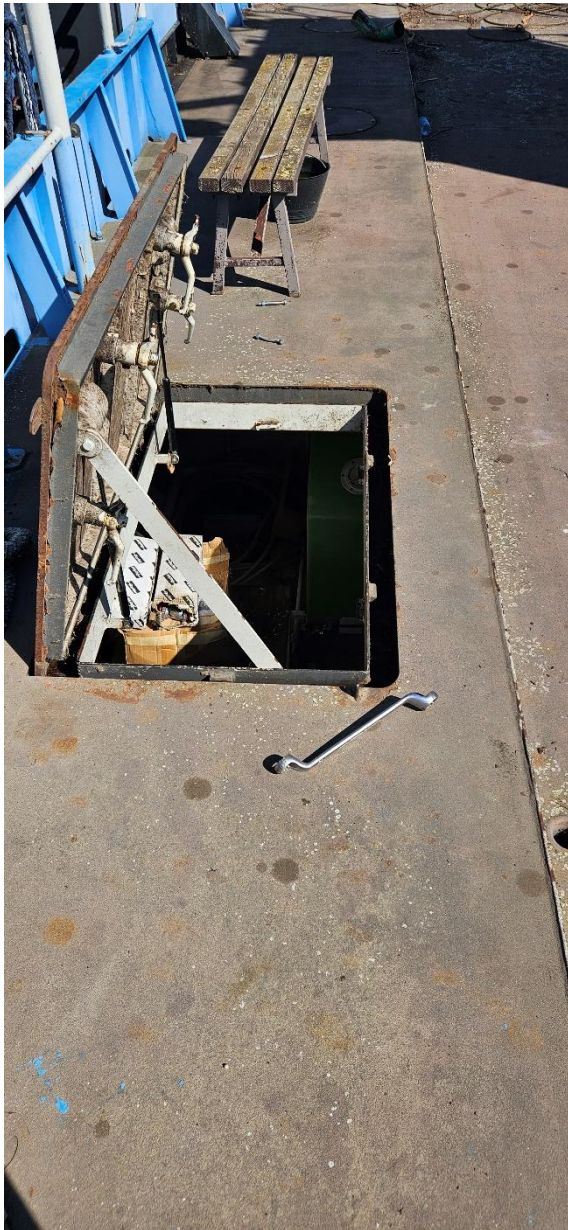














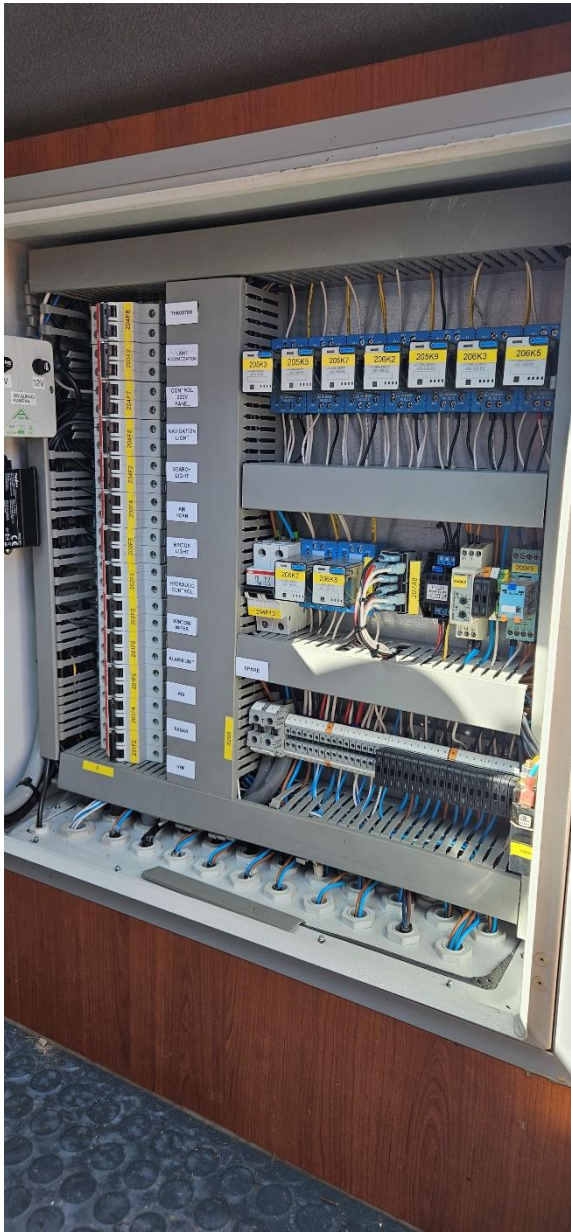






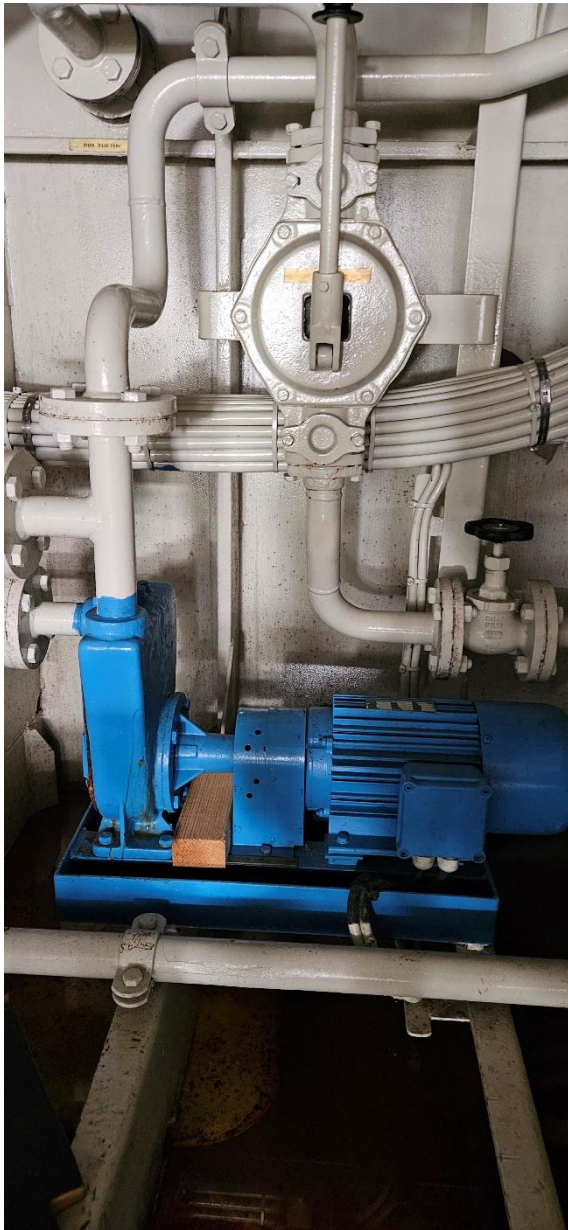


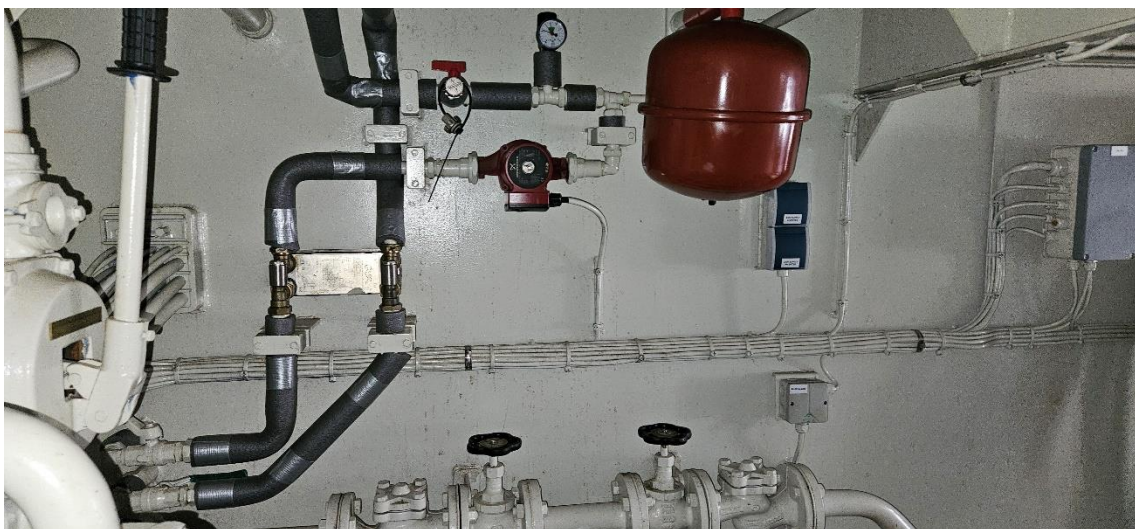














CAR/PASSENGER RIVER FERRY

