

DAMEN

FAST FERRY 4212

Full specification

FAST FERRY 4212

About this vessel type

Damen's Fast Ferries are known for their quality, reliability and efficiency. We understand that ferries are often the only way of keeping connected, and that they function as genuine lifelines for islands and remote areas. Our designs focus on passenger comfort, high operability and predictable maintenance.

The Damen Fast Ferry 4212 is a high-speed aluminium catamaran, designed for coastal operations aiming at high passenger comfort, low fuel consumption and low maintenance costs.



DAMEN FAST FERRY 4212

General



Built	2018
Dimensions	42.20 x 11.60 x 3.80 mtrs
Draft	1.50 mtr
Material	Aluminium both hull and superstructure

Significant wave height 2.38 mtrs

DAMEN FAST FERRY 4212

General



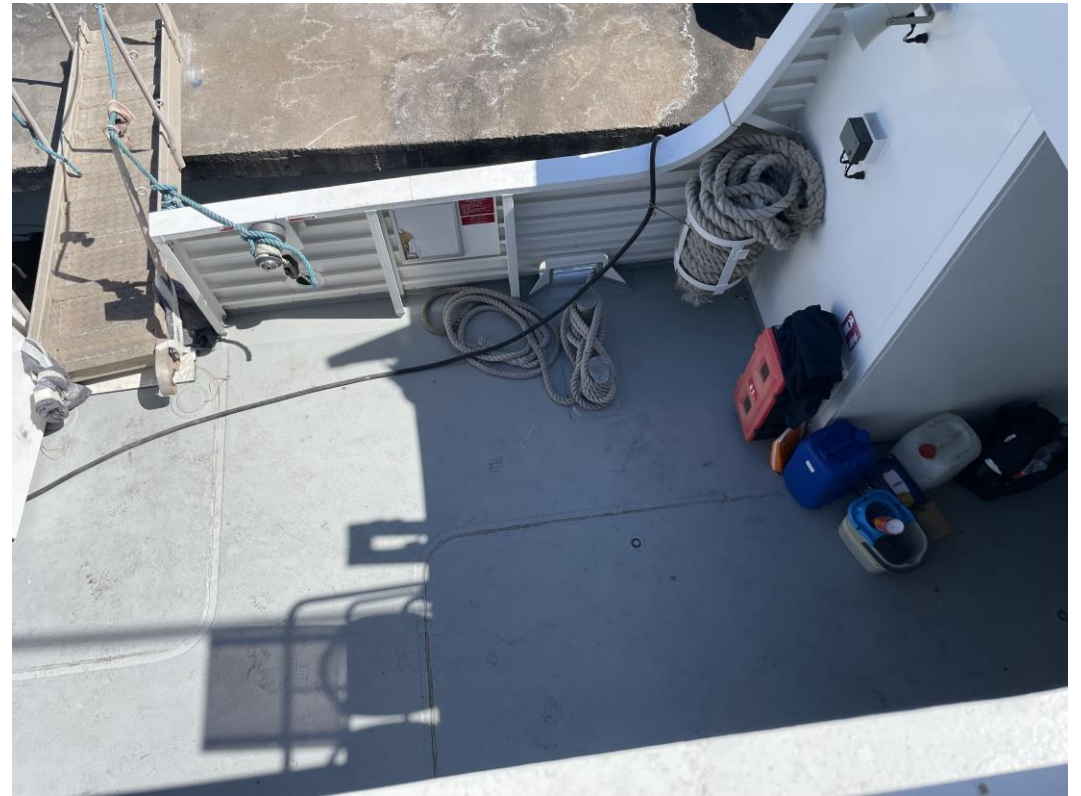
Vessel is equipped with two gangways.

One on main deck, one on top deck.

(the large gangway on the image is not part of the vessel)

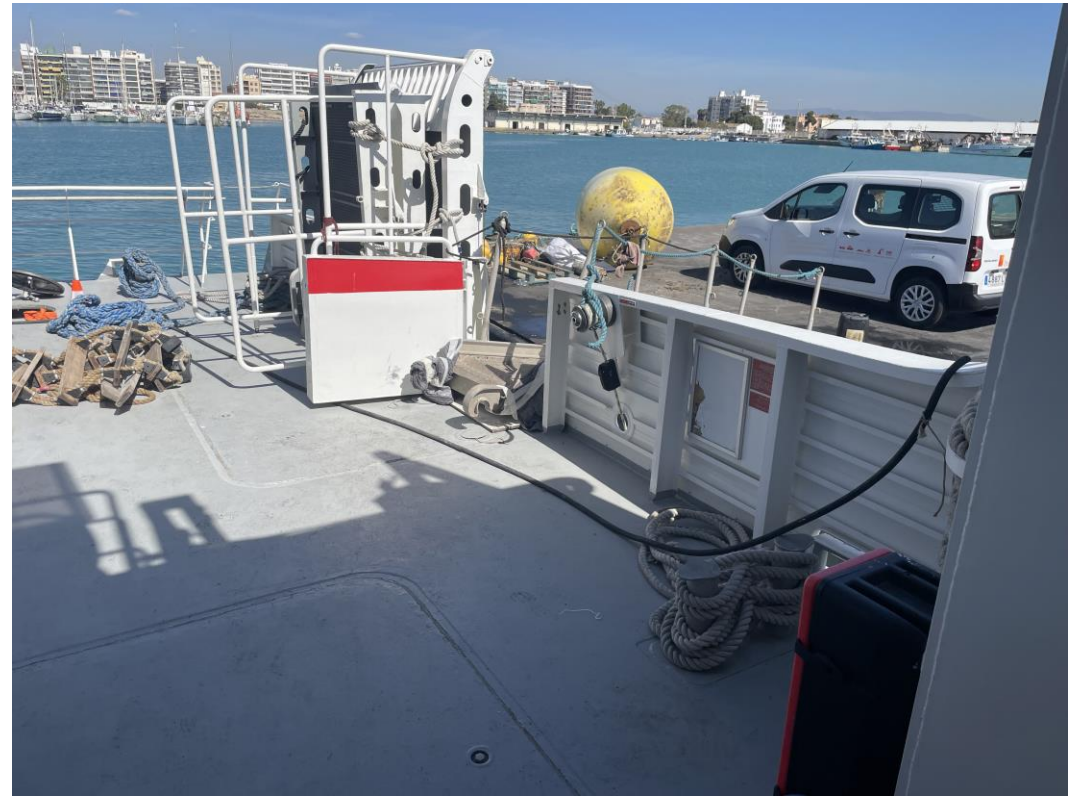
DAMEN FAST FERRY 4212

Access to the vessel

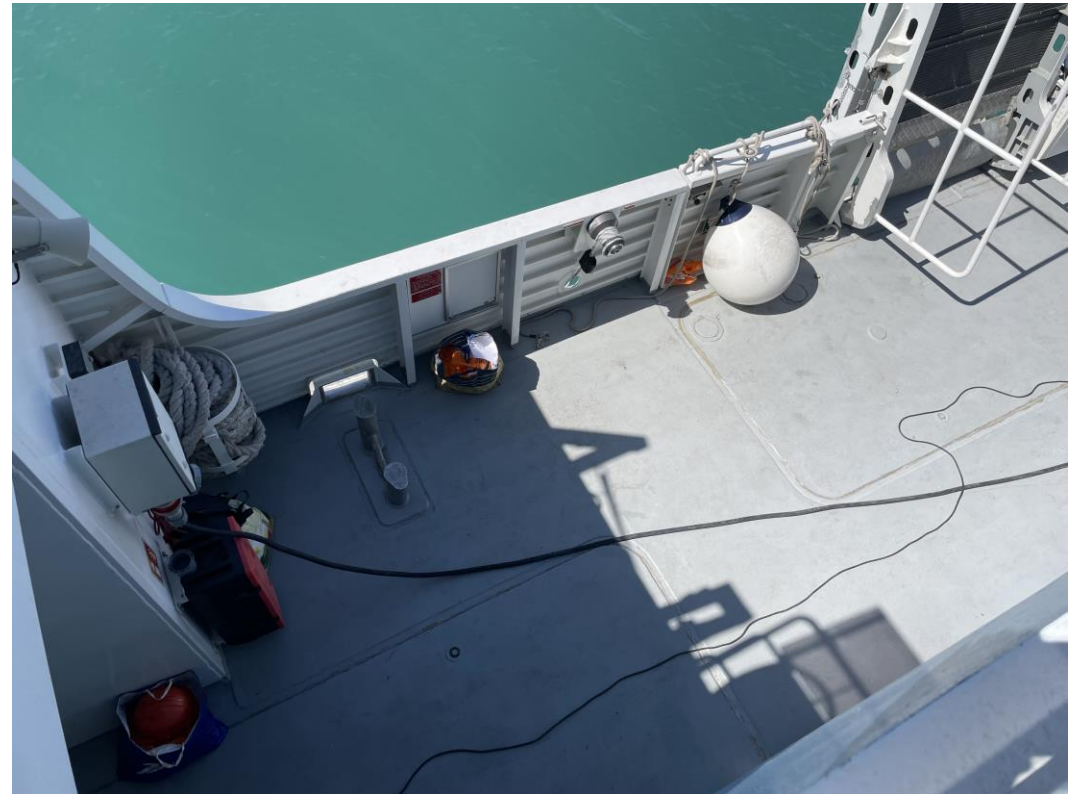


DAMEN FAST FERRY 4212

Side view



DAMEN FAST FERRY 4212



DAMEN FAST FERRY 4212

Small RHIB at the side



DAMEN FAST FERRY 4212

SB side



DAMEN FAST FERRY 4212

Top deck seats



DAMEN FAST FERRY 4212

Storage



DAMEN FAST FERRY 4212

Bridge



Navigation and communication equipment according to HSC Code 2000 and GMDSS A2, including: X-Band radar, S-Band radar, Gyro compass, ECDIS chart plotter, VDR

Bureau Veritas 1 ✕HULL ✕MACH High Speed Craft – CAT A Sea Area 2 ✕AUT-UMS
IMO High Speed Craft Code 2000

DAMEN FAST FERRY 4212

Bridge



DAMEN FAST FERRY 4212

Premium passenger area



Seating capacity main deck	286
Seating capacity upper deck	<u>124</u>
Total passenger capacity	410

Crew capacity 5

Bar/kiosk on main deck and upper deck

Toilets 7x

Air-conditioning with temperature control.

DAMEN FAST FERRY 4212

Premium passenger area



DAMEN FAST FERRY 4212

Passenger area



DAMEN FAST FERRY 4212

Passenger area



DAMEN FAST FERRY 4212

Engine room



4x Caterpillar, type C32

2984 bkW @ 1600-1800 rpm

4x Reintjes gearboxes, type WLS 730

DAMEN FAST FERRY 4212

Engine room



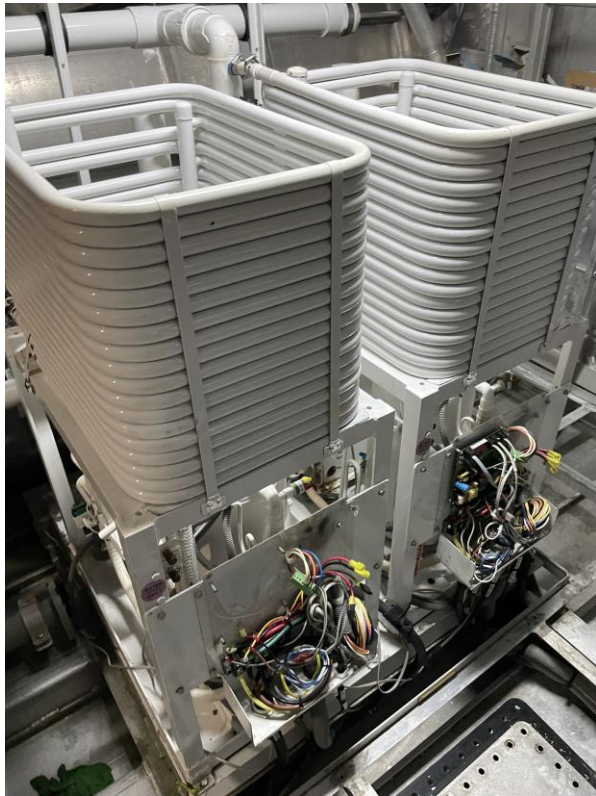
DAMEN FAST FERRY 4212

Engine room



DAMEN FAST FERRY 4212

Engine room



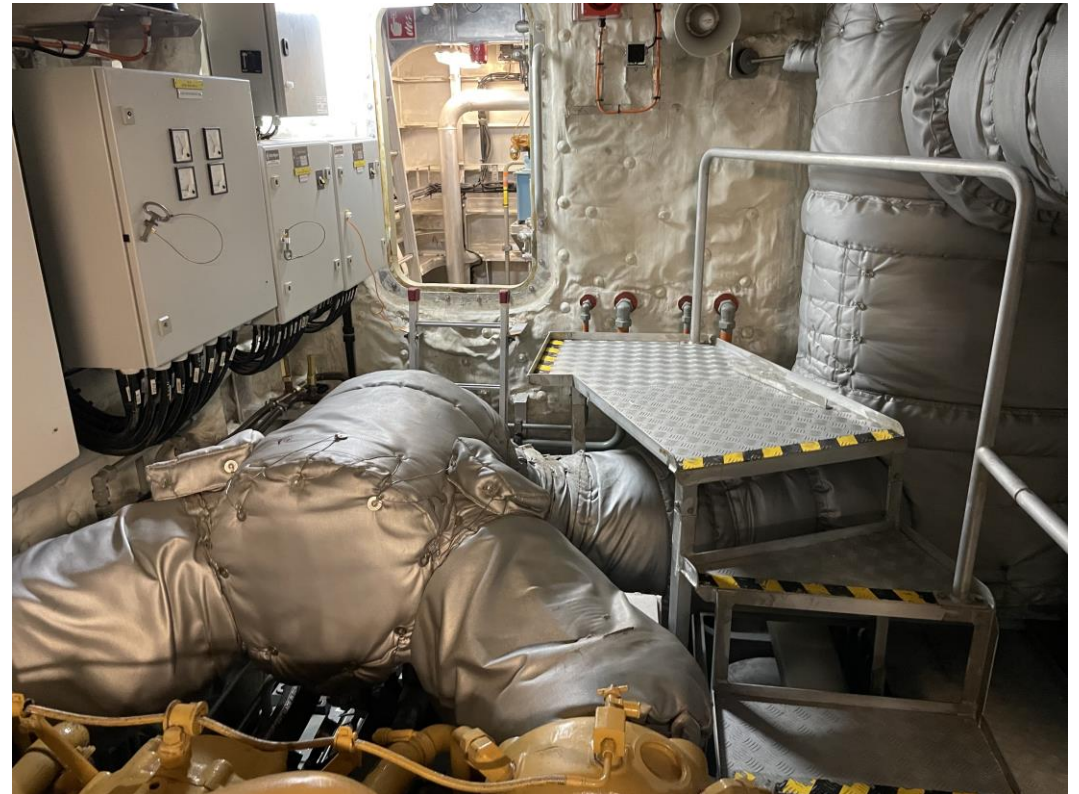
DAMEN FAST FERRY 4212

Engine room



DAMEN FAST FERRY 4212

Engine room



DAMEN FAST FERRY 4212

Generator sets



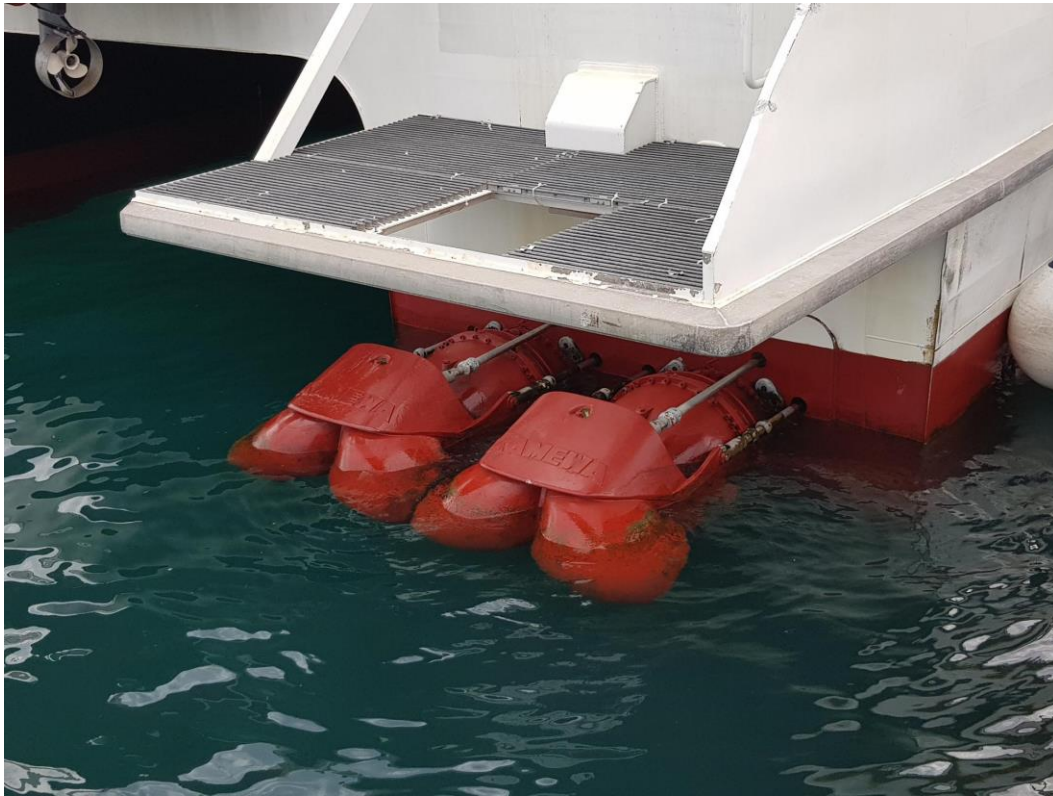
2x Caterpillar, type C4.4

2x 86 ekW

400V / 230V AC, 3 phase, 50 Hz, 24V DC

DAMEN FAST FERRY 4212

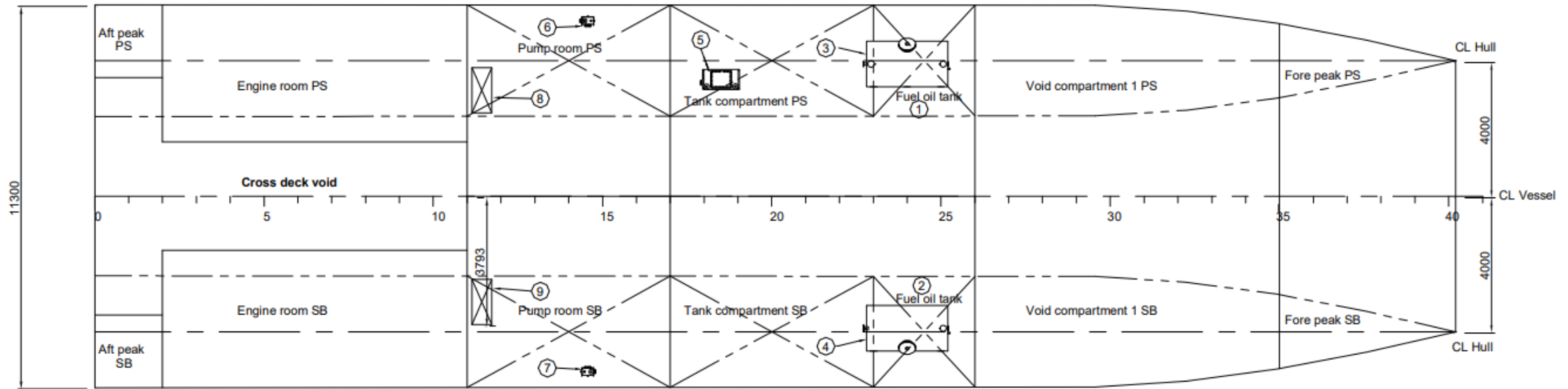
Propulsion



4x KaMeWa waterjets, type A56II

± 28 knots max. at 26 tons deadweight

Tank arrangement



Fuel oil 14.0 m³

Sewage 2.5 m³

Fresh water 2.5 m³

Bilge 0.3 m³

DAMEN FAST FERRY 4212

Unique features

» High passenger comfort

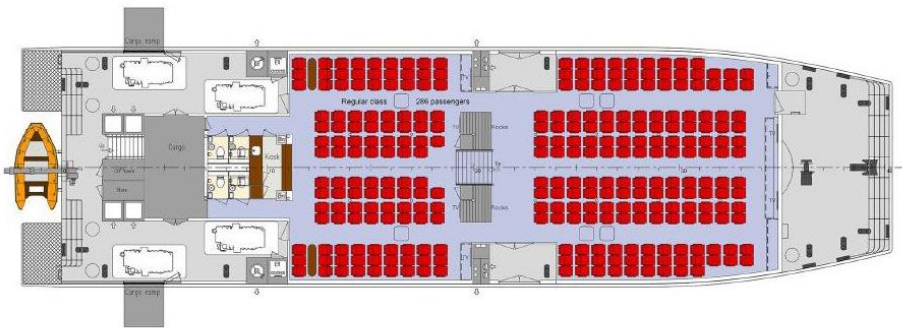
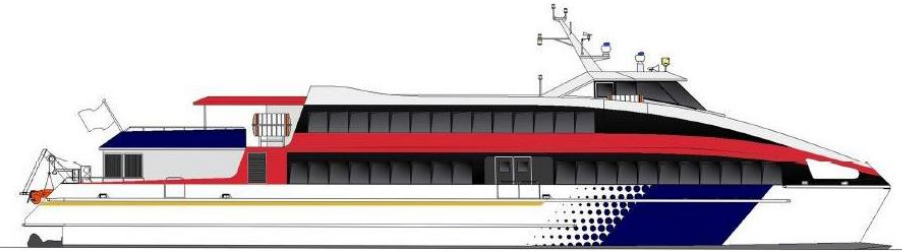
A lot of attention has been paid to the spaces and seats on board, to ensure the passenger's comfort is at a high level. The journey should not only be safe but also a pleasure.

» We never compromise on safety

Damen never compromises on safety. Our Fast Ferries embody the highest safety standards. And although designed for speed and efficiency, they still have excellent seakeeping abilities.

» Low fuel consumption

The design of the vessel in combination with the installed machinery was carefully chosen to keep fuel consumption low, ensuring a positive effect on operational costs.



Our team



Michel Radjiman
Senior Sales Manager
Working with Damen Trading since 1997



Michiel Dijxhoorn
Sales Manager
Working with Damen since 2012



Petra Buskens
Sales Assistant
Working with Damen Trading since 1992





DAMEN