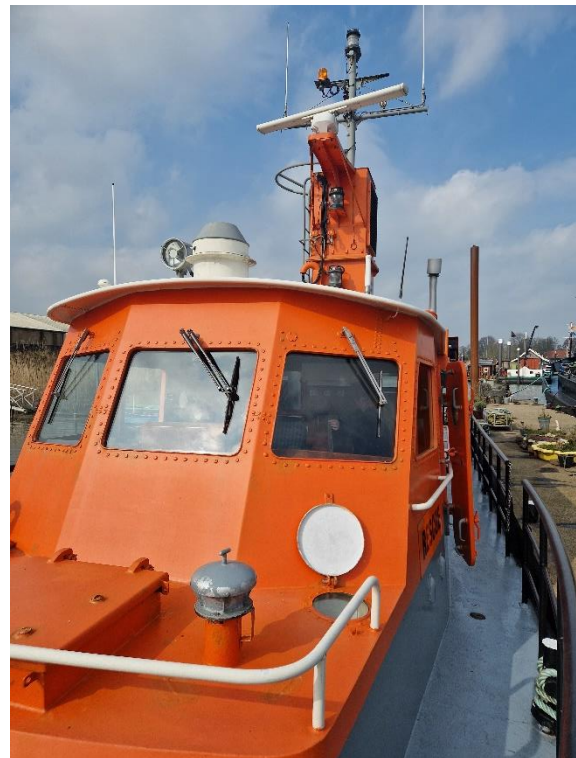
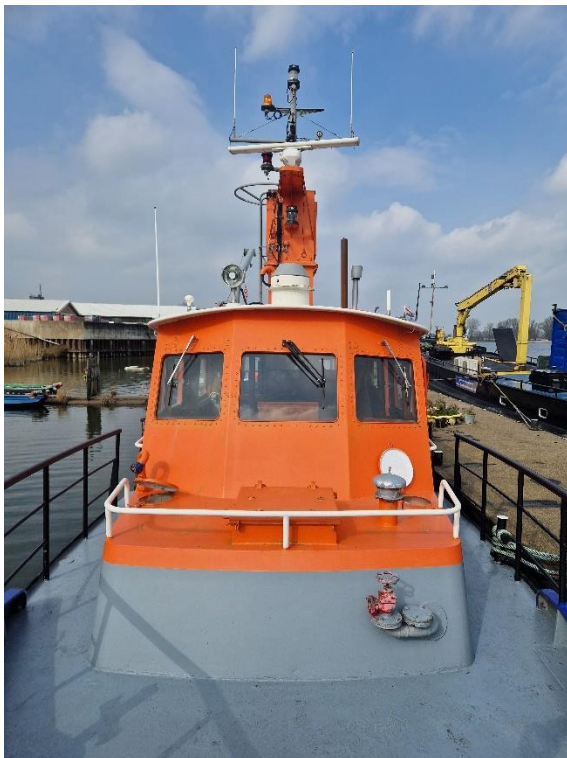


This steel boat is in excellent condition and suitable as patrol, survey and crewboat.

| | |
|--------------------|---|
| Type | Patrol – survey - crewboat |
| Built | 1983, Germany |
| Dimensions | 18.90 x 4.47 mtrs |
| Draft | 1.20 mtrs |
| Airdraft | ± 9 mtrs |
| Hull material | Steel |
| Tonnage | GRT 35.64 / NRT 8.80 |
| Propulsion | Single screw |
| Main engine | MWM, type V-12 |
| Output | 575 hp |
| Gearboxes | Reintjes, type WAV4 |
| Generator | MWM 15 kVA |
| Fifi monitors | 2x 5000 ltrs/min. each |
| Passenger capacity | 6 |
| Fuel capacity | ± 3000 ltrs |
| Equipment | Simrad EQ44 echosounder / depth sounder /Fishfinder Simrad CX44 NavStation Simrad 17" screen Simrad GMDSS Simrad RS82 marifoon Simrad AP50 automatic pilot Sailor RT2048 VHF Simrad rudder indicator Simrad GN33 chart plotter Orlaco camera system AIS Simrad radar Daylight radar Compass Searchlight |
| Class | No class |
| Remark | In excellent condition. |



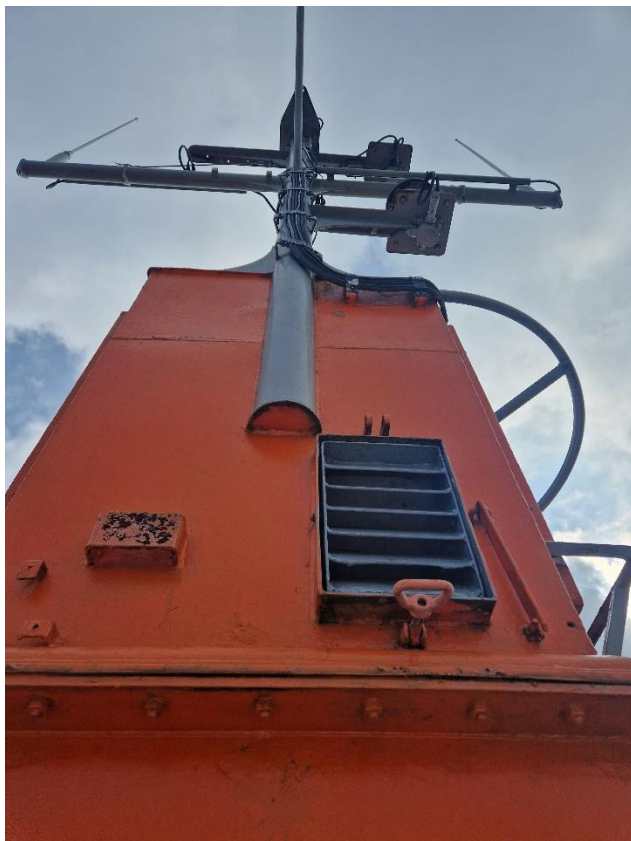










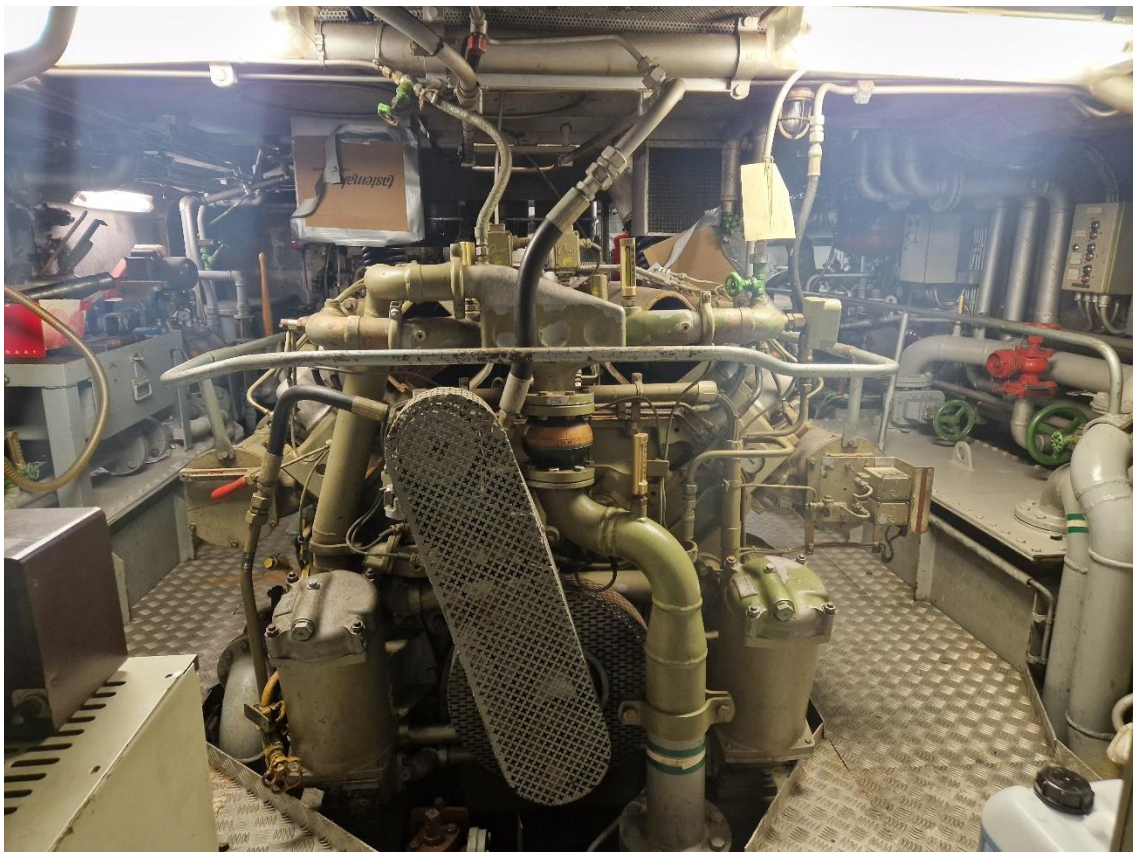


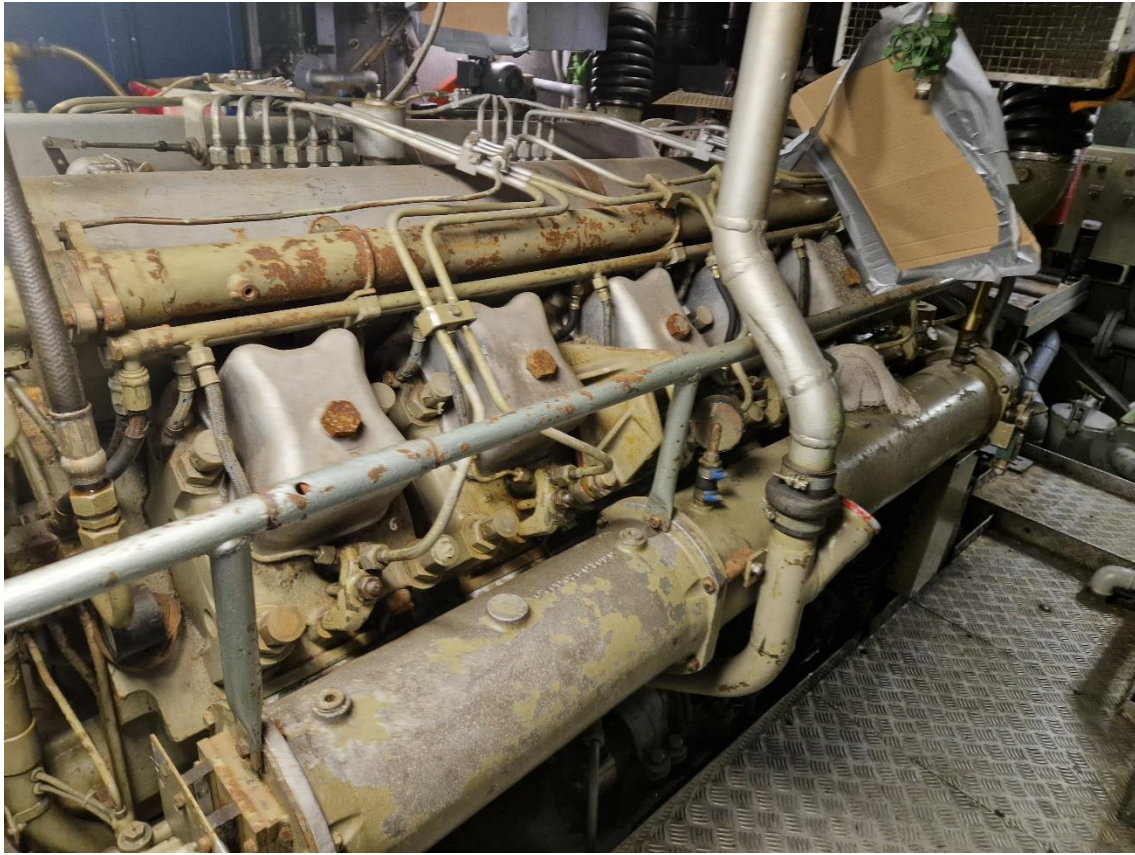




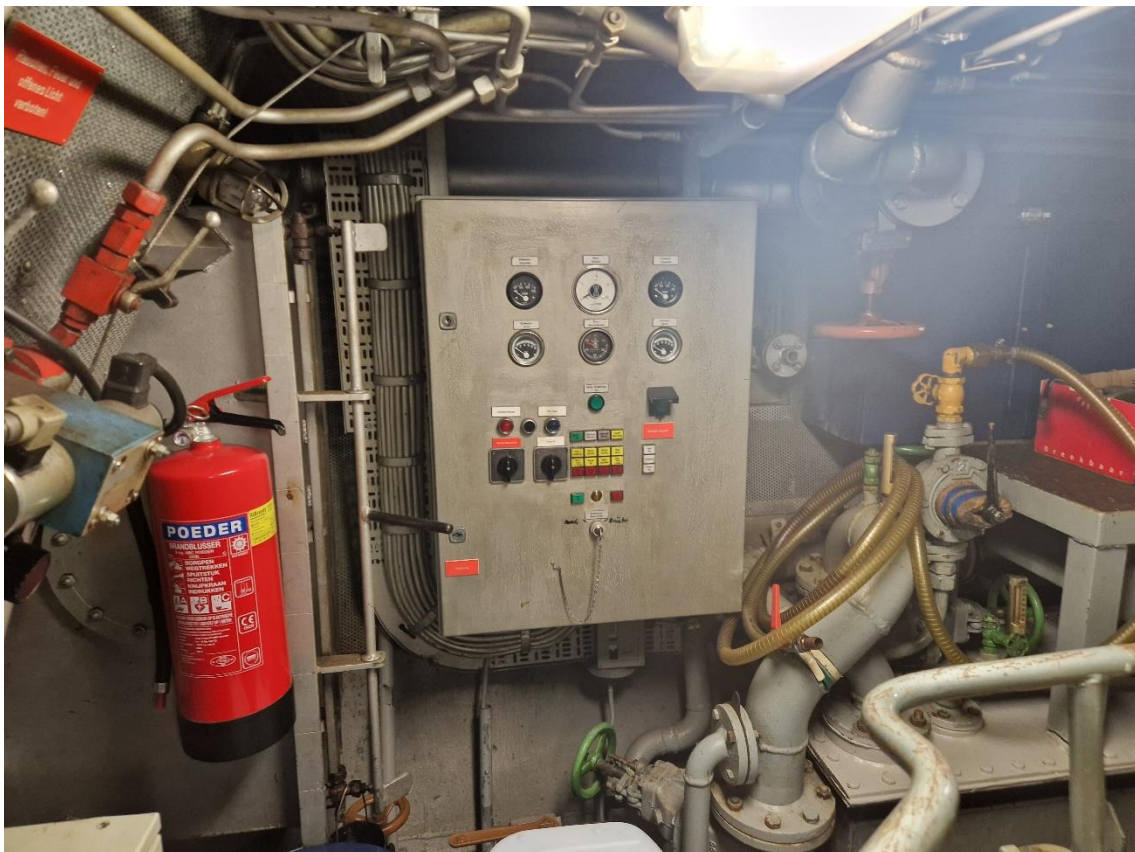


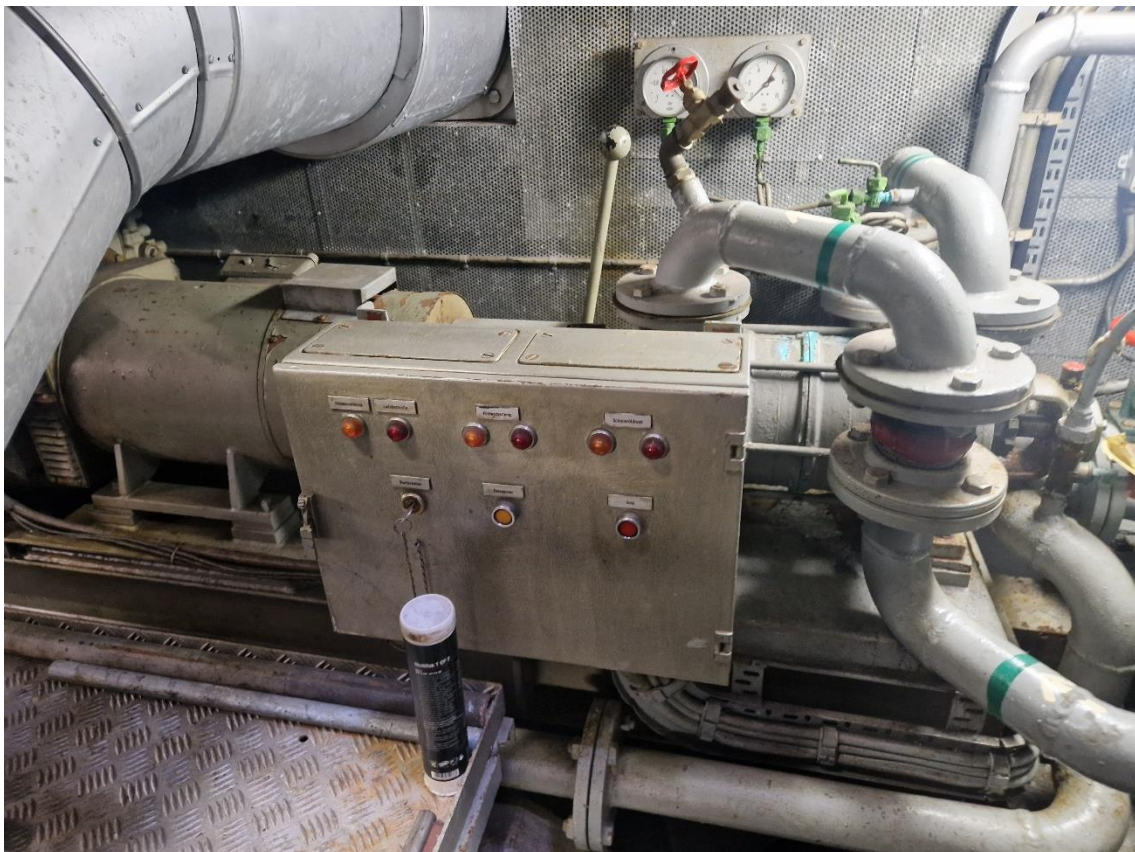
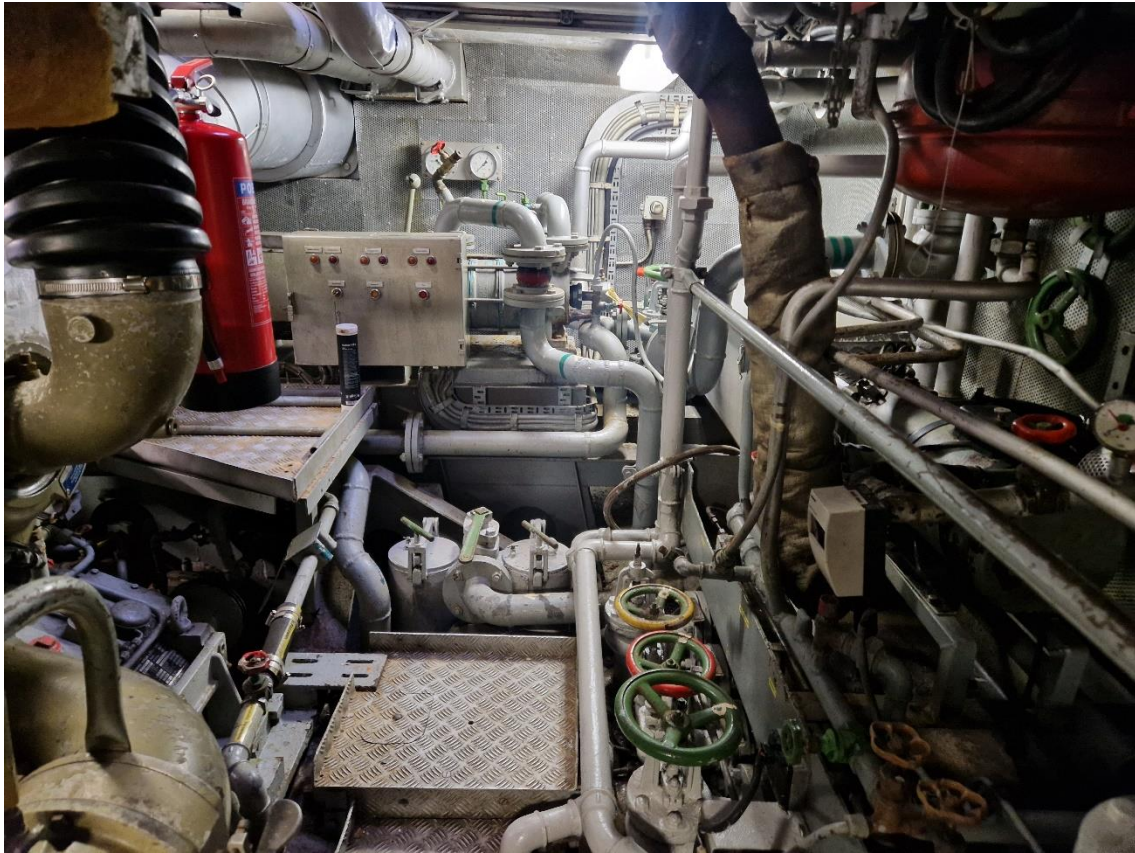


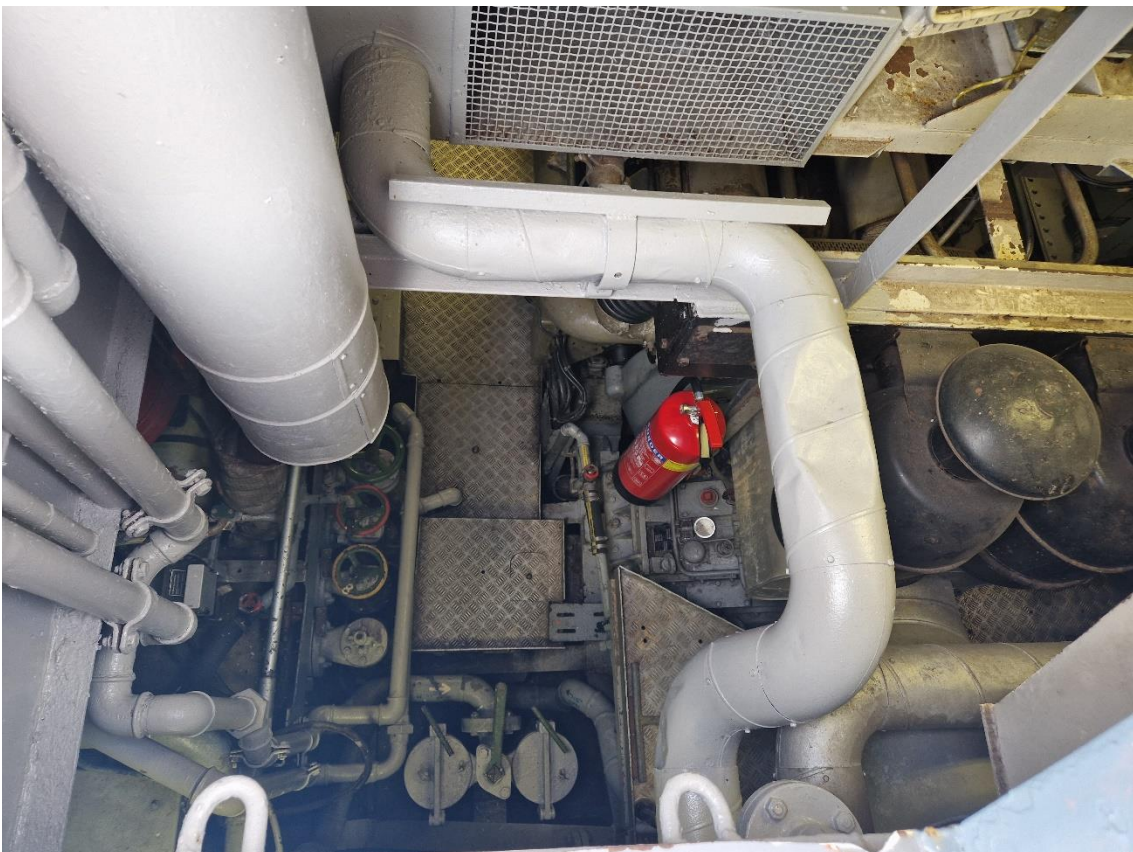
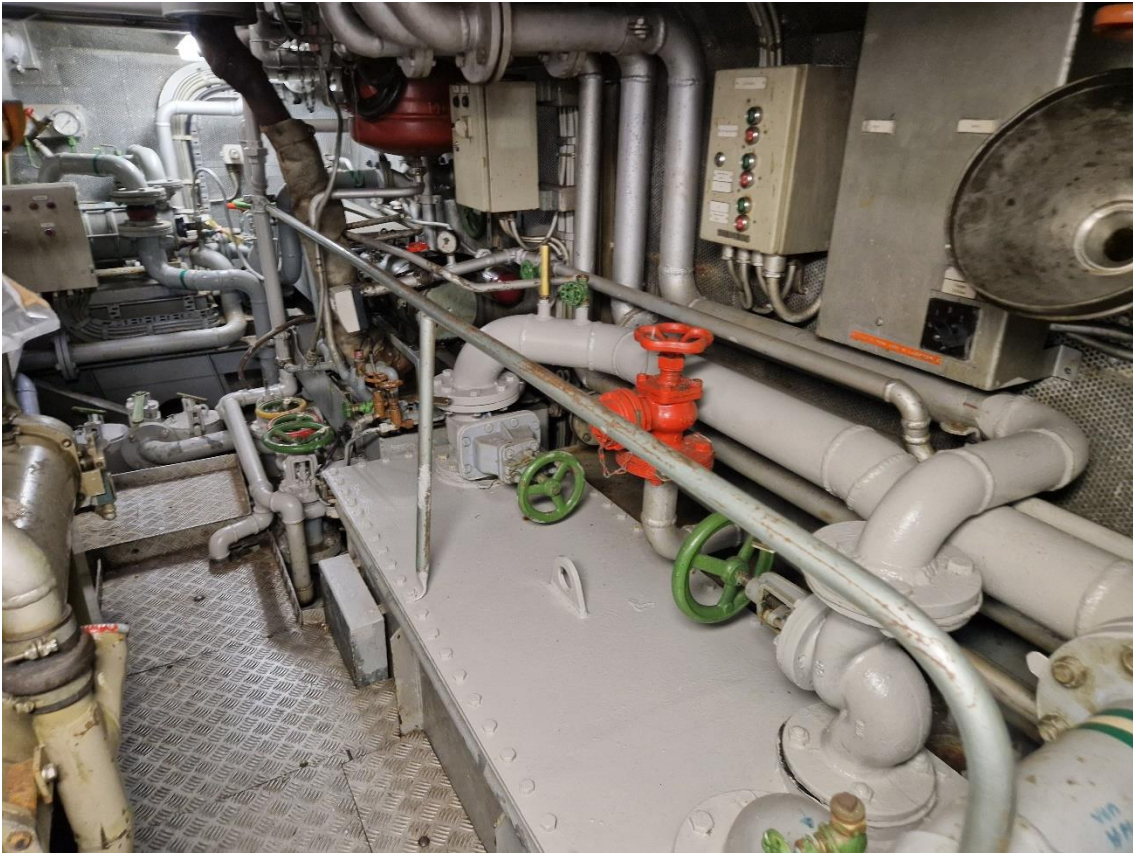


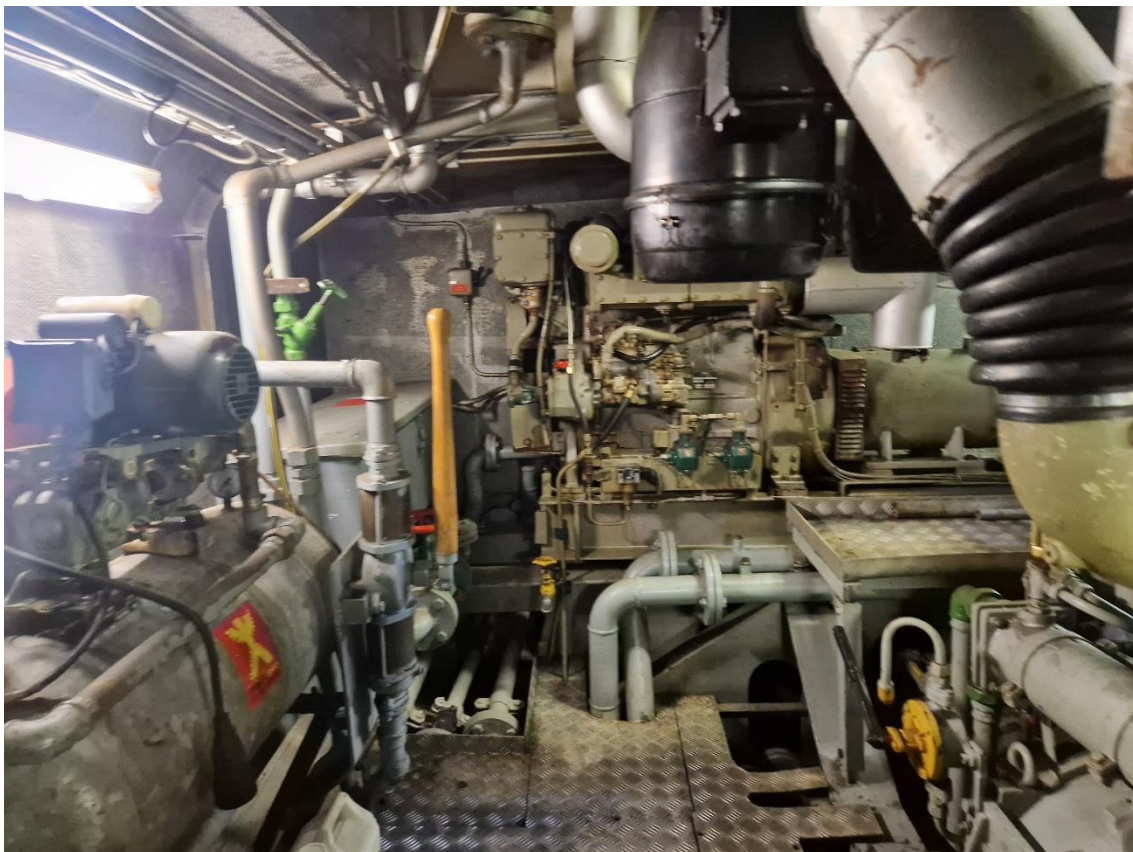


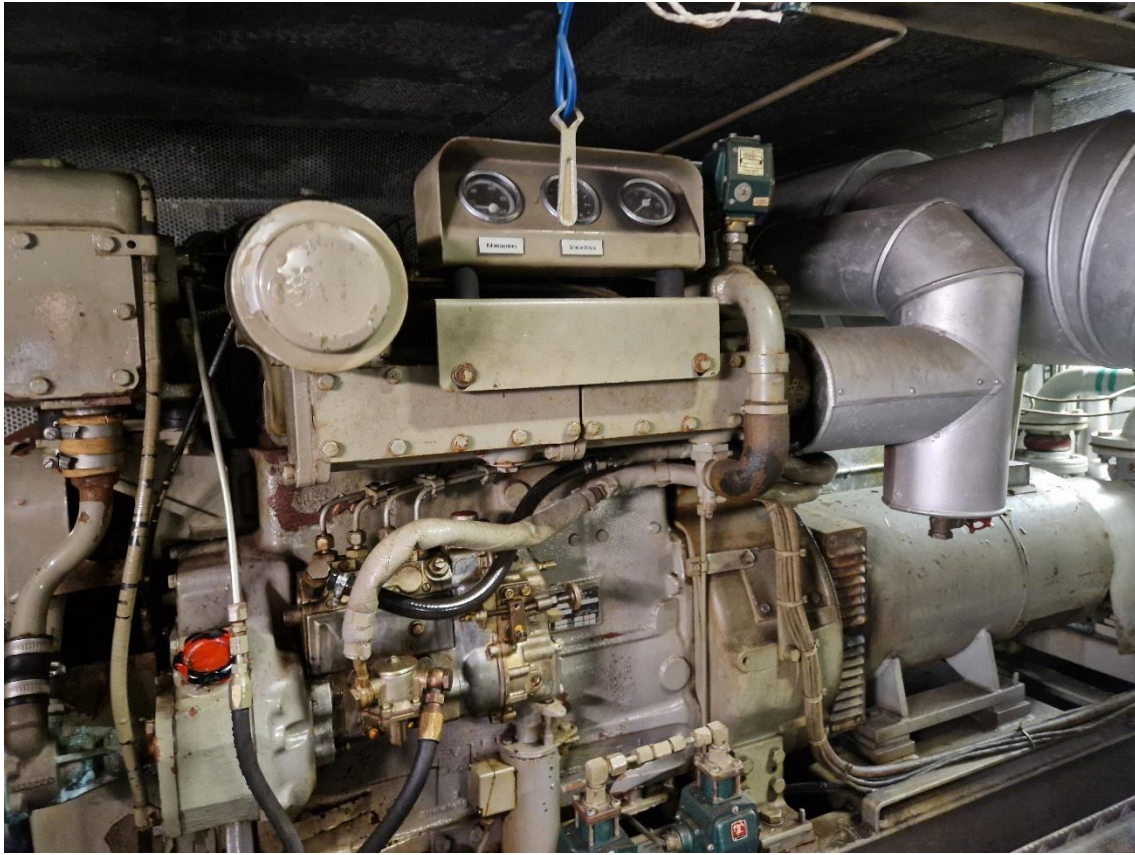


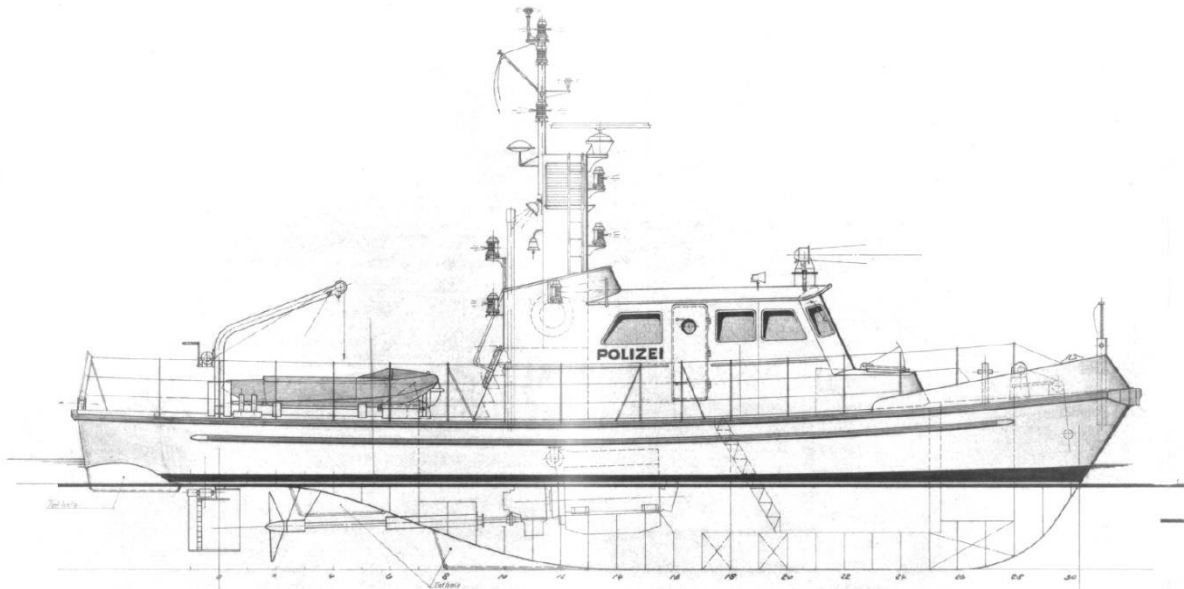












PATROL – SURVEY - CREWBOAT

