

*This high-speed passenger vessel is in very good condition and ready to sail your passengers to their destination.*

Type	High-speed passenger vessel	
Built	2019, Spain	
Dimensions	30.45 x 9.00 x 3.82 m	
Draft	1.83 m (summer)	
Hull material	GRP	
Tonnage	GRT 336 / NRT 123 / TDW 42	
Propulsion	2x Fixed pitch propellers	
Main engines	2x MTU, type 16V 4000 M63L	
Output	6007 hp total at 1800 rpm	
Speed	33 Knots @ 85 % MCR	
Aux. engines	2x Kohler, 78 kW	
Tank capacities	Fuel	10.000 ltrs
	Fresh water	2.000 ltrs
Passenger capacity	300 Passengers total (there are 70 external seats which are not on the certificate)	
Nav./comm. equipment	As per class regulations.	
Class	National class ★90B1 4 (coastal service) Passenger ship HSC SD K★M1 AUT3	
Remark	Vessel is in a good condition.	



















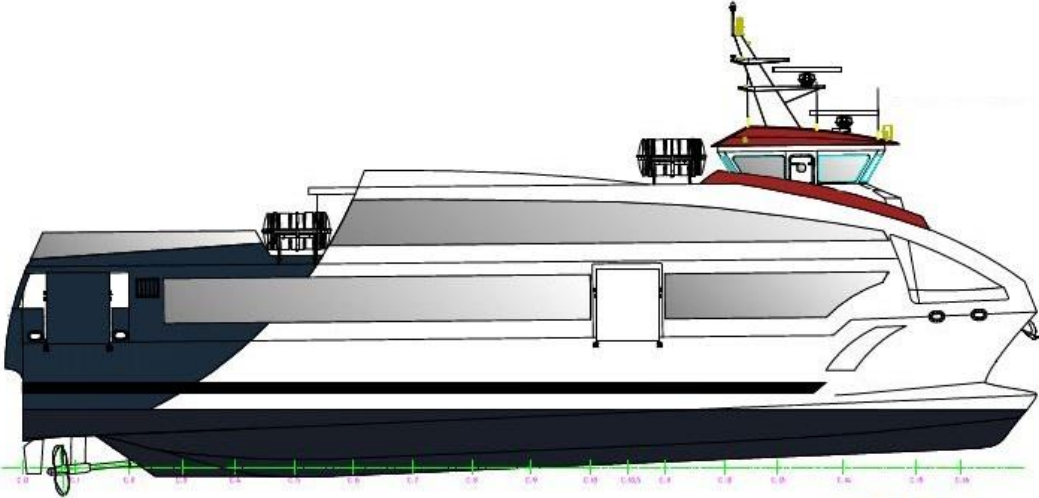




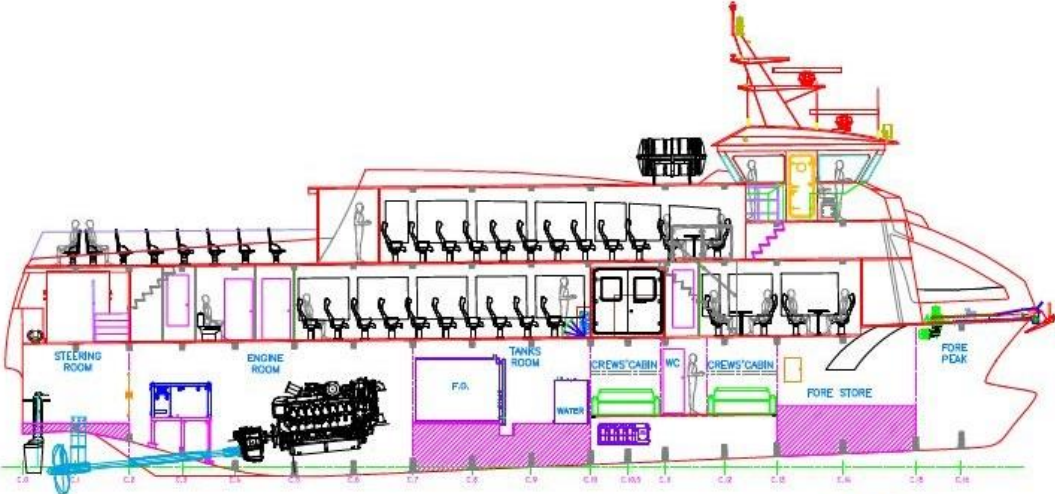




HIGH-SPEED PASSENGER VESSEL



OUTBOARD PROFILE



INNER PROFILE

HIGH-SPEED PASSENGER VESSEL

