

*These two survey launches, were former daughter crafts on board of a survey vessel.*

Type	Fassmer survey launch
Built	1987
Dimensions	7.40/6.60 x 2.72 x 1.33 mtrs
Draft	0.53 mtr
Max. draft at Z-drive	0.95 mtr
Gross weight	4.650 kgs with 3 persons on board and fully equipped
Hull shape and material	V-shape light alloy; AIMG 4.5 Mn and AIMg Si 1, capable of falling dry on sand banks/mud.
Max. noise level	75 dBA
Bulkheads	2, Collision bulkhead and forward engine room bulkhead 3 compartments and foam filled void spaces to guarantee positive buoyance under all circumstances.
Propulsion	Single shaft with 2 contra rotating 3-bladed propellers
Main engine	Volvo Penta, type Aquamatik AQAD 41 A/DP (new installed 2007)
Output	177 hp at 3800 rpm
Cooling	Keel cooling and 1000 W engine heater fitted
Speed	17 knots at 3250 rpm 19 knots at 3800 rpm
Alternators	1x 28V – 100A, 1x 28V – 50A fitted with grounding via a capacitor for dissipation of static tension. Cables are fitted with L-C suppressors with a 50 kHz to 600 MHz range outside the engine compartment.
Batteries	4x 120 AH
Shore connection	220V – HNA sockets
Fuel capacity	300 ltrs
Endurance	8.5 hours at full load
Lifting	Lifting hook forward and aft.
Foldable mast	Yes
Nav./comm. equipment	Fog horn, magnetic compass, Simrad autopilot
Class	None

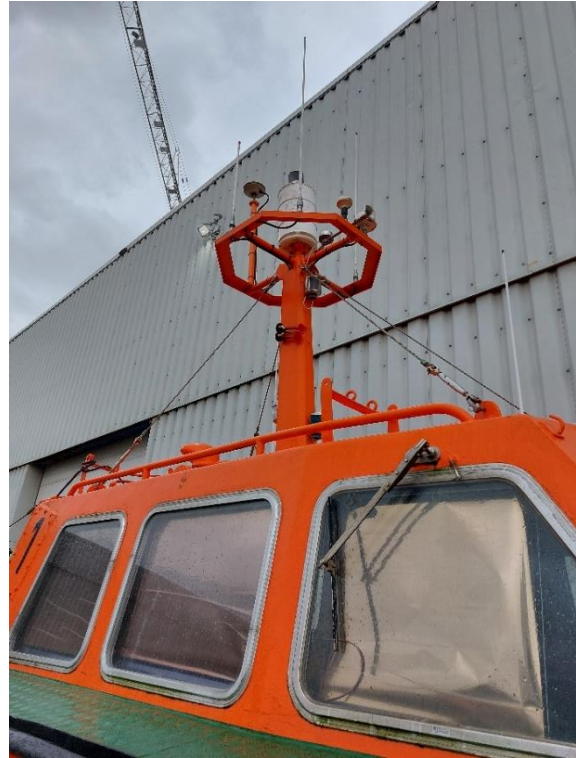


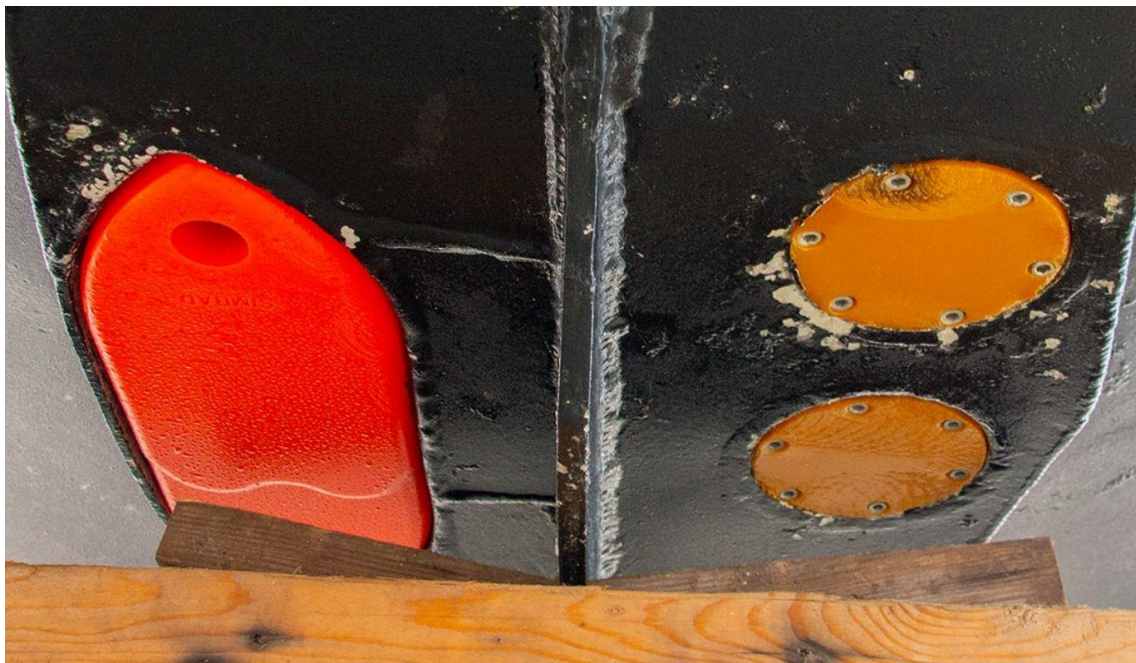














SURVEY LAUNCH (2x)

