

# DAMEN

## FCS 4008 Crewboat

Full specification

FCS 4008

## About this vessel type

Damen's FCS range provide safe and comfortable crew transport based on the improved seakeeping behaviour that comes courtesy of the Axe Bow.

The main focus of the FCS 4008 is crew transfer, but thanks to the spacious aft deck it is also capable of carrying deck cargo. It can also handle a range of equipment like cranes, fire-fighting apparatus and rescue craft.

Having served on the seas for decades, the Damen Fast Crew Supply Vessel designs are of proven reliability. The basis for the range is a balance between comfort, speed, operability, efficiency and flexibility.

The FCS creates a fast, reliable connection between port and offshore operations. The Sea Axe hull reduces demands on crew. Propulsion options allow operational requirements to be matched with efficiency.



## DAMEN FCS 4008 CREW TRANSFER VESSEL

# Suitable for offshore crew transfers



*(photo taken when new)*

Built 2017

Dimensions 41.20 x 8.70 x 3.90 m

Draft 3.00 m

Steel hull, aluminium superstructure

Range 1200 nm at maximum speed

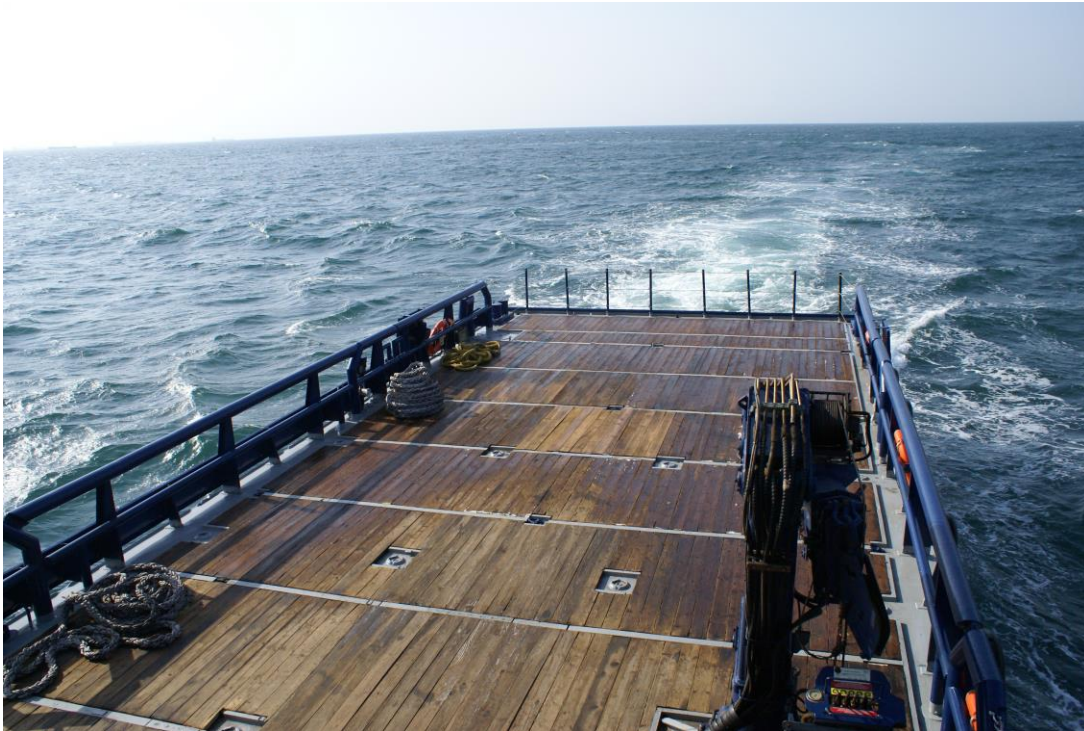
## DAMEN FCS 4008 CREW TRANSFER VESSEL

# Bridge deck



## DAMEN FCS 4008 CREW TRANSFER VESSEL

# Aft deck



Free deck area 140 m<sup>2</sup>

Deck strength 2.5 tonnes/m<sup>2</sup>

Wooden deck cover partly renewed mid 2023.

## DAMEN FCS 4008 CREW TRANSFER VESSEL

# Crane



HEILA HLM 20-S3, fully foldable deck crane.

### Capacities:

4660 kgs at 2.79 m

2890 kgs at 4.79 m

1980 kgs at 6.74 m

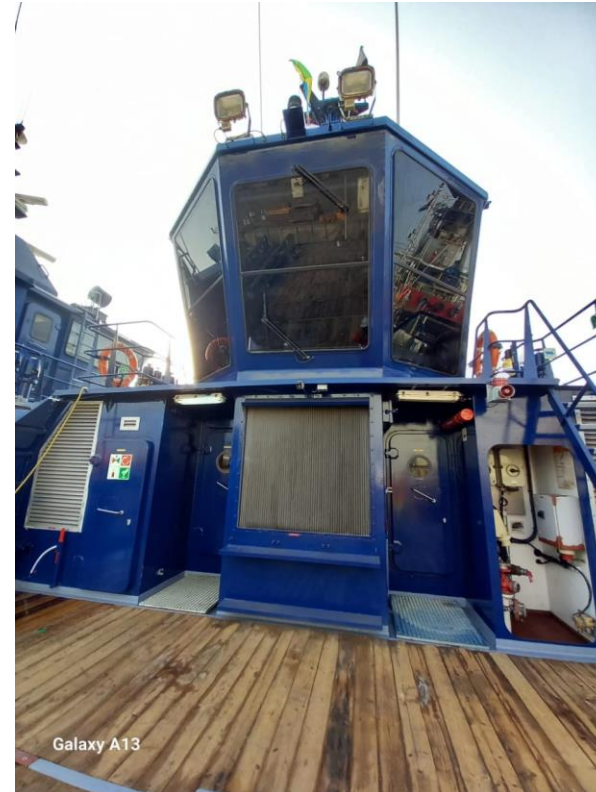
1480 kgs at 8.70 m

1200 kgs at 10.56 m

Completely overhauled mid 2023 including load test.

## DAMEN FCS 4008 CREW TRANSFER VESSEL

# Anchor winch and wheelhouse



## DAMEN FCS 4008 CREW TRANSFER VESSEL

# Bridge



Navigation and communication according to class regulations.

Bureau Veritas I ✕Hull •MACH Crew Boat Sea Area 4



## DAMEN FCS 4008 CREW TRANSFER VESSEL

# View from the bridge on aft deck



## DAMEN FCS 4008 CREW TRANSFER VESSEL

# View from bridge on aft deck



All windows are provided with sunscreens.

DAMEN FCS 4008 CREW TRANSFER VESSEL

# Heavy duty rubber fenders and tyres



## DAMEN FCS 4008 CREW TRANSFER VESSEL

# Passenger area



Passenger area on main deck with seats for 90 persons.

## DAMEN FCS 4008 CREW TRANSFER VESSEL

# Passenger area



## DAMEN FCS 4008 CREW TRANSFER VESSEL

# Galley below main deck



## DAMEN FCS 4008 CREW TRANSFER VESSEL

# Mess-room below main deck



## DAMEN FCS 4008 CREW TRANSFER VESSEL

# Crew accommodation below main deck





## DAMEN FCS 4008 CREW TRANSFER VESSEL

# Propulsion

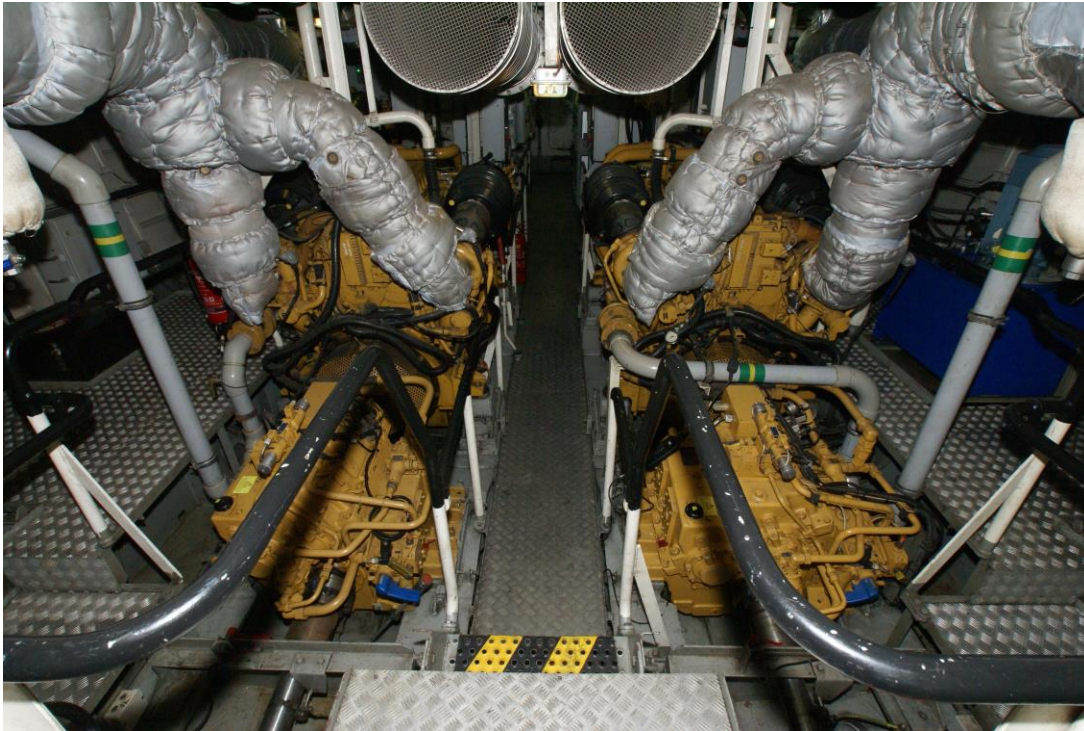


Four fixed pitch propellers.

Bow thruster 120 kW, electrically driven.

## DAMEN FCS 4008 CREW TRANSFER VESSEL

# Engine room



4x Caterpillar, type C32 TTA, 5798 hp total

Top-end overhaul mid 2023.

Speed  $\pm$  26 knots

4x Reintjes, type WVS 730/1 L

Engine room ventilation:

2x 15.500 m<sup>3</sup>/hr each

## DAMEN FCS 4008 CREW TRANSFER VESSEL

# Main engines



## DAMEN FCS 4008 CREW TRANSFER VESSEL

# Generators



2x Caterpillar C 4.4, each 99.0 ekW – 123.0 kVA

Complete major overhaul mid 2023.

## DAMEN FCS 4008 CREW TRANSFER VESSEL

# Tank capacities

Content	Indication on tank	Net volume (m3)
Fresh water cargo tank	3 FW	20.95
Sewage tank CL	5 SE	1.89
Fresh water tank CL	6 FW	13.38
Fuel oil tank SB	7 FO	30.92
Fuel oil tank PS	8 FO	30.92
Fuel oil day tank SB	9 FO	2.65
Fuel oil day tank PS	10 FO	2.65
Bilge water tank	11 BW	1.02
Dirty oil tank	12 DO	1.02

## DAMEN FCS 4008 CREW TRANSFER VESSEL

# Fuel and water separator



DAMEN FCS 4008 CREW TRANSFER VESSEL

# Air-conditioning



Two air-conditioning compressor units installed.

DAMEN FCS 4008 CREW TRANSFER VESSEL

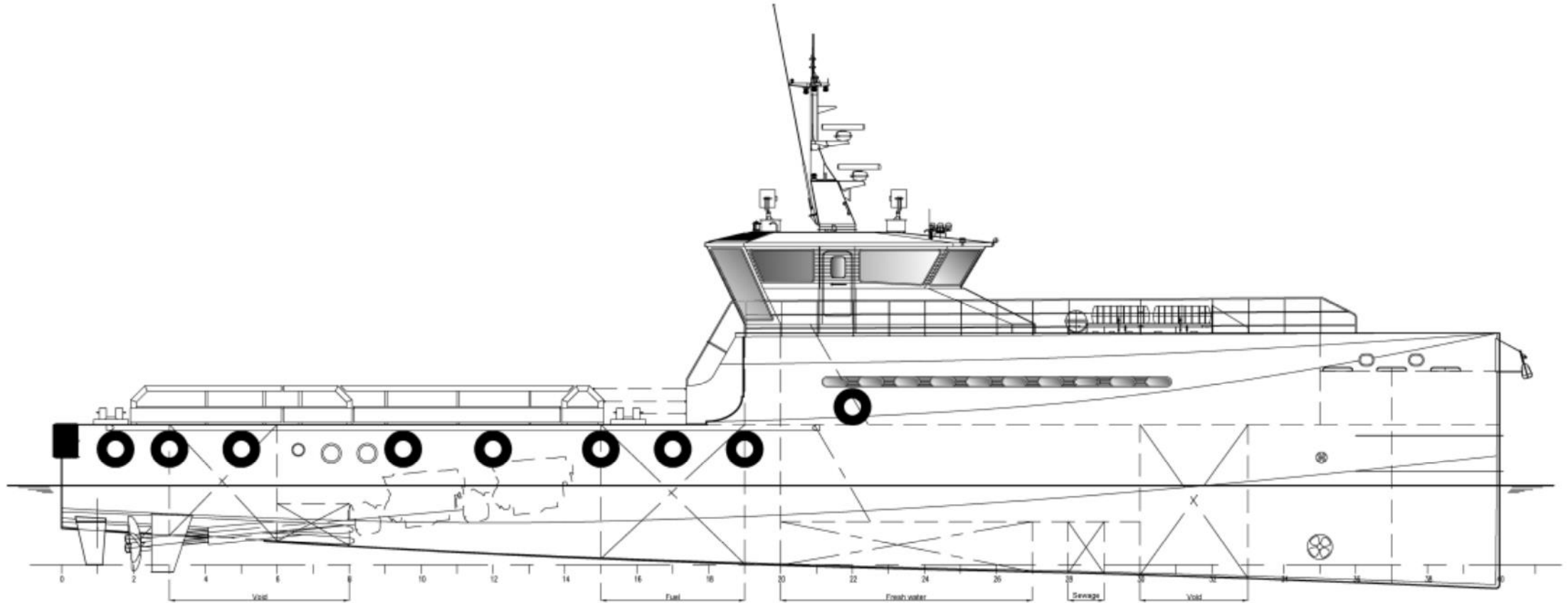
# Electrical switch boards





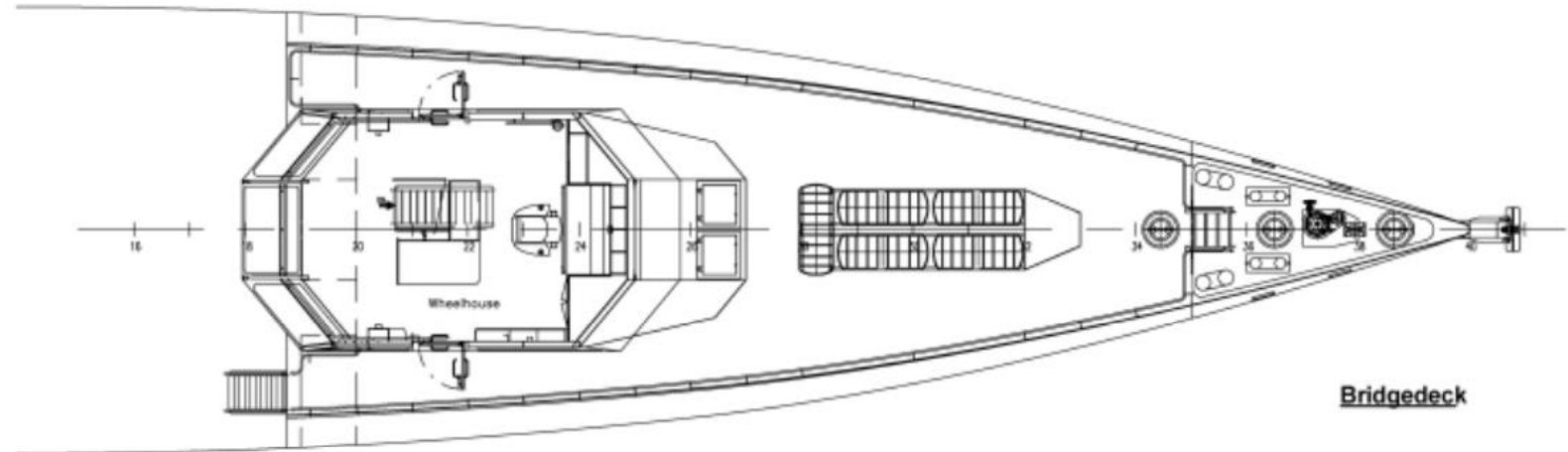
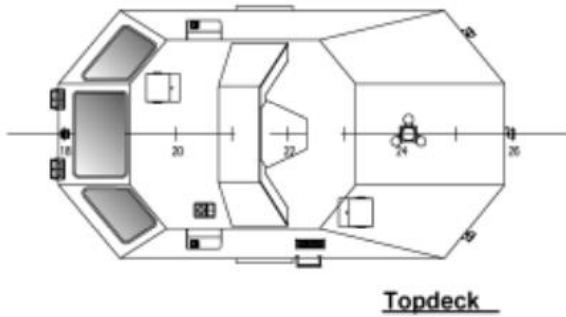
## DAMEN FCS 4008 CREW TRANSFER VESSEL

# Profile



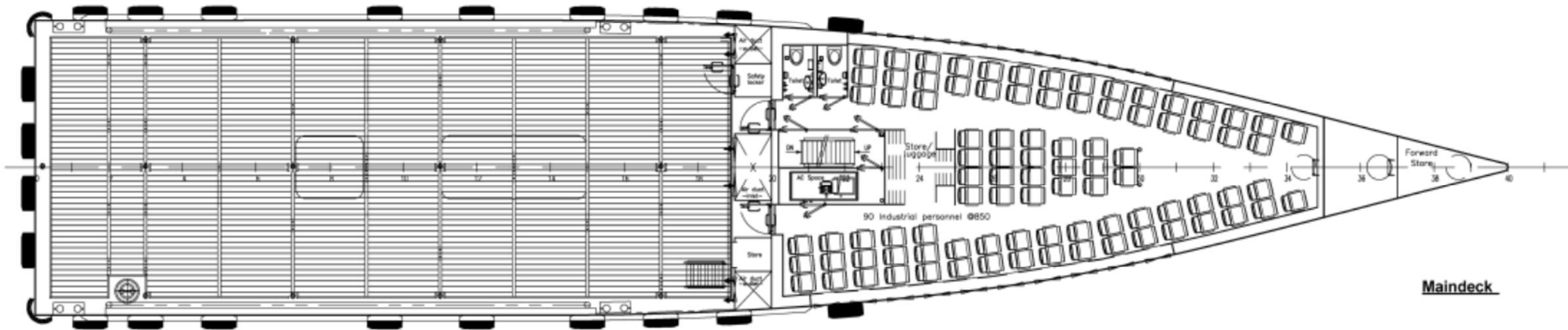
## DAMEN FCS 4008 CREW TRANSFER VESSEL

# Bridge deck and top deck



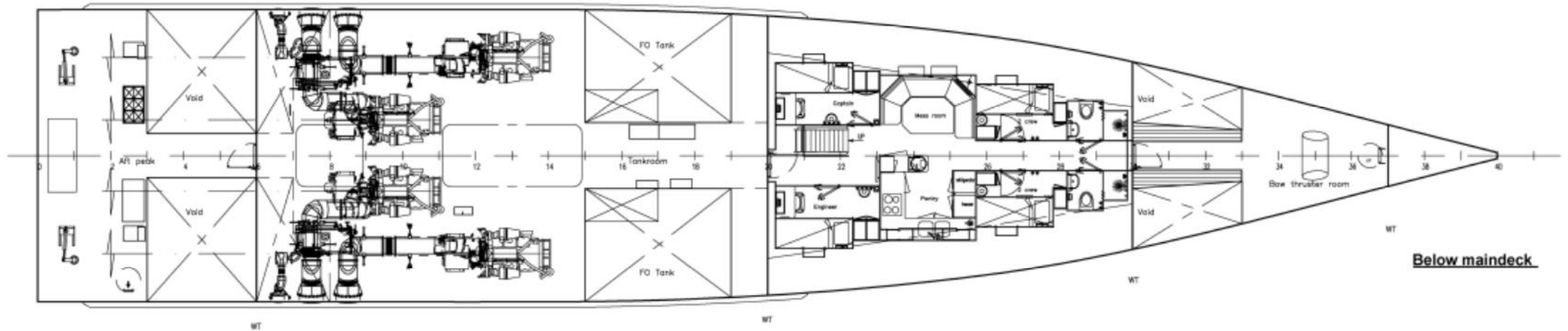
## DAMEN FCS 4008 CREW TRANSFER VESSEL

# Main deck



## DAMEN FCS 4008 CREW TRANSFER VESSEL

# Below main deck



## DAMEN FCS 4008 CREW TRANSFER VESSEL

# Special features

### »» Linking sea and shore

The FCS creates a fast, reliable connection between port and offshore operations. The Sea Axe hull reduces demands on crew. Propulsion options allow operational requirements to be matched with efficiency.

### »» We never compromise on safety

Damen never compromises on safety. Our Fast Crew Suppliers embody the highest safety standards. And although designed for speed and efficiency, they still have excellent seakeeping abilities thanks to our Sea Axe hull design.

### »» Excellent visibility

Not only does the FCS have excellent visibility from the wheelhouse, passengers also benefit from having an optimal view due to large windows. Often technicians are not seafarers, so we have aimed to make the FCS as comfortable as possible.

### »» Spacious deck, spacious accommodation

Large, flush and uncluttered decks are a major highlight of the FCS. And we have provided an optimised layout, featuring well-located operational compartments and spacious accommodation.



# Our team



**Michel Radjiman**  
Senior Sales Manager  
Working with Damen Trading since 1997



**Michiel Dijxhoorn**  
Sales Manager  
Working with Damen since 2012



**Petra Buskens**  
Sales Assistant  
Working with Damen Trading since 1992





**DAMEN**