

DAMEN

DAMEN **SONG CAM** SHIPYARD

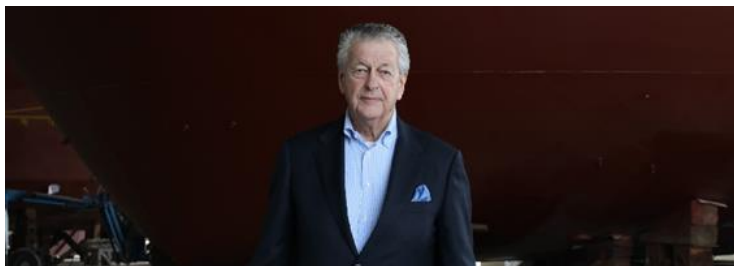
Damen Song Cam Corporate Presentation



Future of Shipbuilding

Home of the world's first workboat factory

OUR HISTORY



1995 - Kommer Damen visits Vietnam



2002 - Damen search and rescue vessels for Vietnam



Over 20 years of shipbuilding cooperation in Vietnam



1999 - Vietnam and Damen: knowledge exchange



From 2003 - Building vessels with Vietnamese partners for export

OUR HISTORY



March 20, 2014 - Damen Song Cam grand opening ceremony



2018 - Build rate 30 vessels per year



40 deliveries / 2 years (2020-2021)



As from 2015 - Damen Song Cam starts building series of tugs



2019 - Over 40 deliveries

SHIPBUILDING VIETNAM

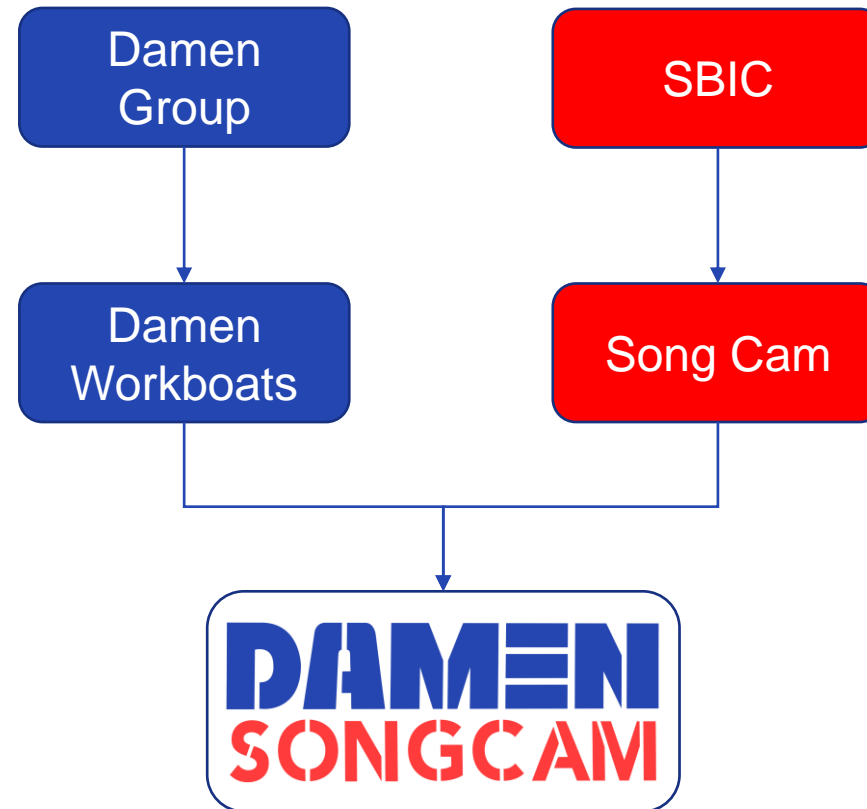
Cooperation

- › 189 Shipyard
- › Song Cam Shipyard
- › Ha Long Shipyard
- › Song Thu Shipyard
- › Ba Son Shipyard



SHAREHOLDER STRUCTURE

Joint Venture



Our joint venture

HULL YARD SONG CAM



OUTFITTING YARD DAMEN SONG CAM

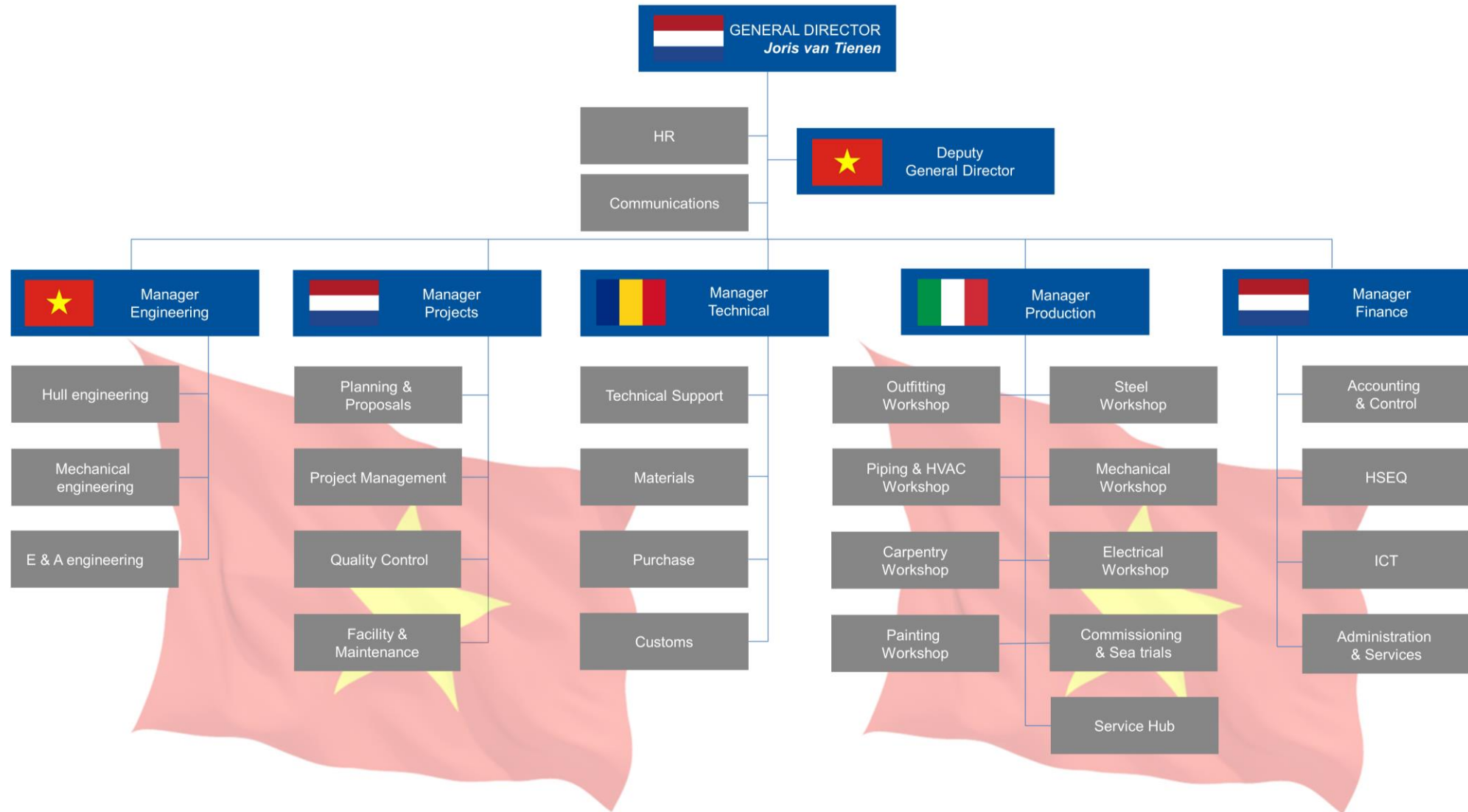


OUR MISSION

To lead the way to the future of sustainable shipbuilding.



OUR ORGANISATION CHART





Legends:

- A Warehouses
- B Workshops
- C Paint shop
- D Outfitting hall
- E Offices and amenities
- F Office building
- G Commissioning and sea trials office
- H Tower crane
- I Shiplift
- J Floating jetty
- P Parking

OUR FACILITIES

Outfitting hall



OUR FACILITIES

Paint shop



OUR FACILITIES

Shiplift platform



OUR FACILITIES

Jetties



OUR FACILITIES

Warehouse





OUR FACILITIES

Mechanical / Piping & HVAC / Steel Workshops



OUR FACILITIES

Carpentry / Electric / Maintenance Workshops



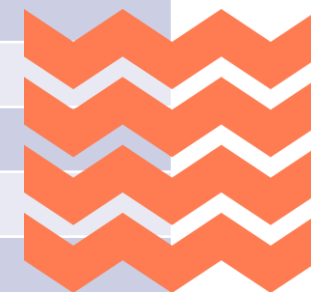
OUR FACILITIES

Multi-wheelers



REFERENCE LIST (END OF JULY 2023)

Ship type	Delivered		Delivered
ART 85-32W	6	FCS 4008	7
ASD 2312	22	FCS 5009	5
ASD 2810	23	MPV 5413	2
ASD 2811	15	MuC 1908	4
ASD 2813	25	Roro 5612	1
ASD 3212	23	RSD 2513	12
ASD 3213	2	RSD 2513-E	1
ASD 3413 ICE	2	SPa 4207	1
ATD 2412	13	SPa 5009	3
CSD 500	1	STU 1907	1
DFe 3508	4	STU 2608	6
DFFe 4212	2	STU 3011	5
FCS 3307	8		
Total		194	





OUR PORT FOLIO

DAMEN'S FIRST FULLY ELECTRIC TUG

Sparky



INTEGRATED ISO CERTIFICATE



SHIPYARD ASSESSMENT STATEMENT

Statement No.: VTU 1410064
Date: 06th June 2014

This statement is issued to:

DAMEN SONG CAM SHIPYARD COMPANY

to certify that Lloyd's Register satisfactorily undertook a shipyard assessment in accordance to the applicable requirements of IACS Z23 for the shipyard carrying out outfitting for ships classed by Lloyd's Register on the 29th and 30th May 2014.

For and on behalf of Lloyd's Register




MARK DARLEY
South Asia Area Manager

PAUL NG
Technical Performance Manager, South Asia

Lloyd's Register Group Limited, its affiliates and subsidiaries and their respective officers, employees or agents are, individually and collectively, referred to in this clause as 'Lloyd's Register'. Lloyd's Register assumes no responsibility and shall not be liable to any person for any loss, damage or expense caused by reliance on the information or advice in this document or howsoever provided, unless that person has signed a contract with the relevant Lloyd's Register entity for the provision of this information or advice and in that case any responsibility or liability is exclusively on the terms and conditions set out in that contract.



Current issue date: 26 May 2021
Expiry date: 26 May 2024
Certificate identity number: 10247555

Original approval(s):
ISO 14001 - 26 May 2015
ISO 45001 - 26 April 2019
ISO 9001 - 12 November 2014

Certificate of Approval

This is to certify that the Management System of:

Damen Song Cam Shipyard Co., Ltd.

Loi Dong Hamlet, Hoang Dong Commune, Thuy Nguyen District Hai Phong City, Vietnam

has been approved by Lloyd's Register to the following standards:

ISO 14001:2015, ISO 45001:2018, ISO 9001:2015

Approval number(s): ISO 14001 – 0045404, ISO 45001 – 0045404, ISO 9001 – 0045404

The scope of this approval is applicable to:


Ship building (including engineering works)
of length up to 60 m

For and on behalf of Lloyd's Register



Luis Cunha
Area Operations Manager - SAMEA

Lloyd's Register Group Limited, its affiliates and subsidiaries, including Lloyd's Register Quality Assurance Limited (LRQA), and their respective officers, employees or agents are, individually and collectively, referred to in this clause as 'Lloyd's Register'. Lloyd's Register assumes no responsibility and shall not be liable to any person for any loss, damage or expense caused by reliance on the information or advice in this document or howsoever provided, unless that person has signed a contract with the relevant Lloyd's Register entity for the provision of this information or advice and in that case any responsibility or liability is exclusively on the terms and conditions set out in that contract.



HALCYON RISK BV

MARITIME RISK - MARITIME SURVEILLANCE AND CONSULTANTS

Kerkstraat 6
3361 BP Sliedrecht
Nederland

Tel: 0184 415 474

Fax: 0184 415 242

E-mail: office@halcyonrisk.com

Website: www.halcyonrisk.com

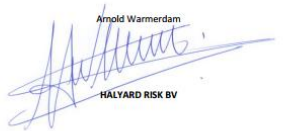
JH 143 SURVEY CERTIFICATE

DAMEN SONG CAM SHIPYARD

GRADE

A

Haiphong, 29 June 2015



Arnold Warmerdam
HALCYON RISK BV

ISO number:
NL851394127801

Entity number:
54687736

Form details:
Rabobank 1692.61.416

Entity:
NL848400166261416

City:
RABONL2U

The delivery conditions for assignments to adjusters, surveyors and valuers are applicable.

HEALTH & SAFETY



OUR CSR PROGRAM



An integral part
of who we are
and what we do

OUR CULTURE

Think global, act local





SHIPBUILDING MOVIES

The entire process

- › The Making of the Damen RSD 2513 E-tug
- › The Making of the Damen ASD Tug 2312





DAMEN