

*The barge is a self-contained work barge originally designed for diving operations in sheltered waters. She is in operational condition.*

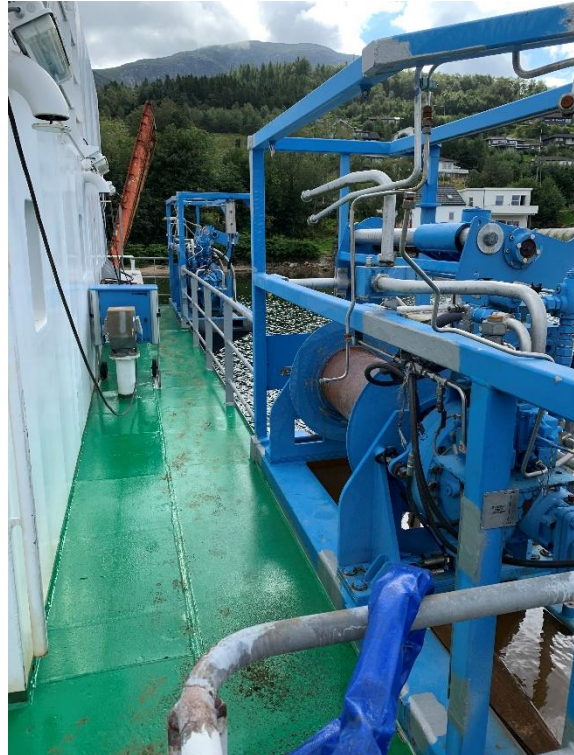
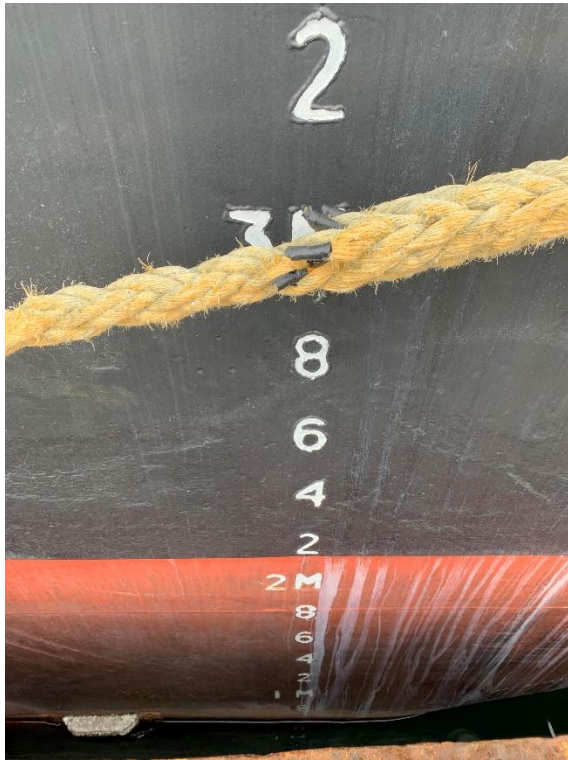
Type	Diving support mooring barge
Built	1977, Norway
Dimensions	27.30 / 25.00 x 15.00 x 3.50 m
Draft	3.00 m operational
Freeboard	1.00 m
Tonnage	917 GT / 302 NT
Deadweight	857 tonnes
Deck strength	2.5 tonnes/m <sup>2</sup>
Moopool	3.5 x 3.5 mtrs
Generator set	2x Volvo Penta, type D12 MG 2x Stamford, 310 kVA at 1500 rpm
Mooring bollards	5x SWL 30 tonnes each
Pumps	2x Centrifugal ballast pumps
Tanks	7 ballast tanks, 2 diesel tanks, 1 fresh water tank, total 658 m <sup>3</sup>
Tank capacities	Fuel oil 33 m <sup>3</sup> In 2 tanks
	Fresh water 29 m <sup>3</sup>
	Ballast 596 m <sup>3</sup> In 7 tanks
Class	DNV +1A1 - R5 – Pontoon (not maintained)
Remark	Below deck there is a 150 m <sup>2</sup> area housing main and auxiliary machinery and storage areas with a 2.5 x 2.5 m hatch.



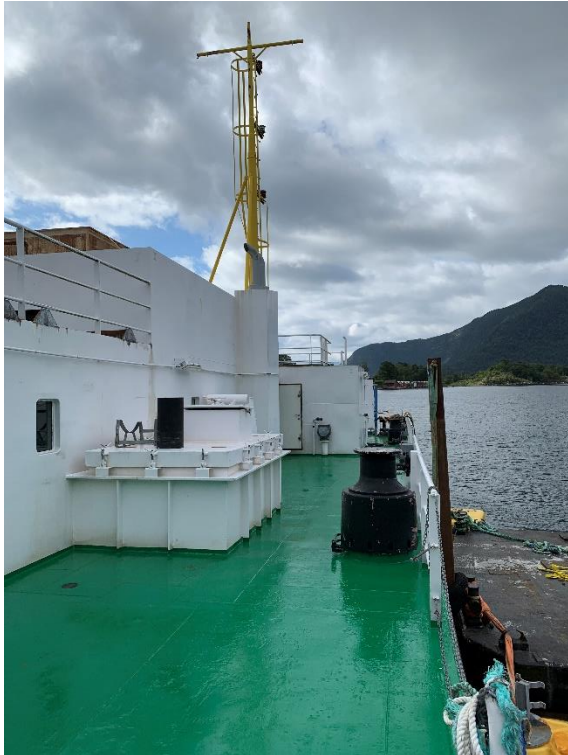














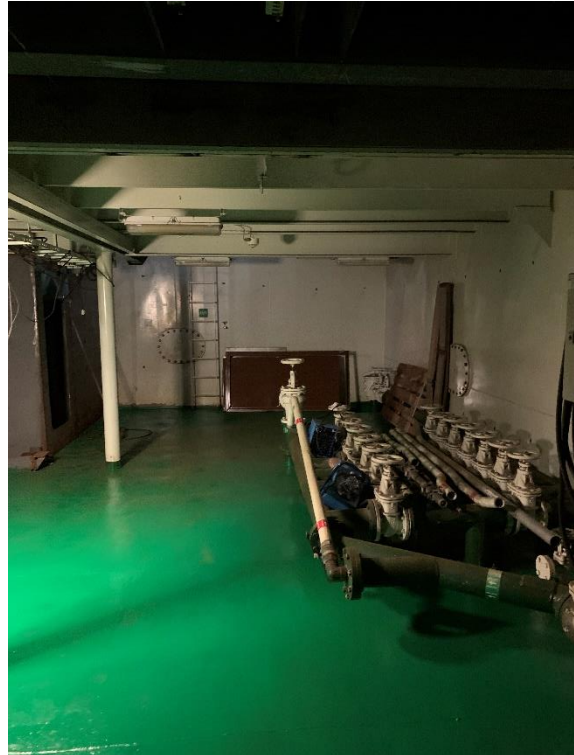


3

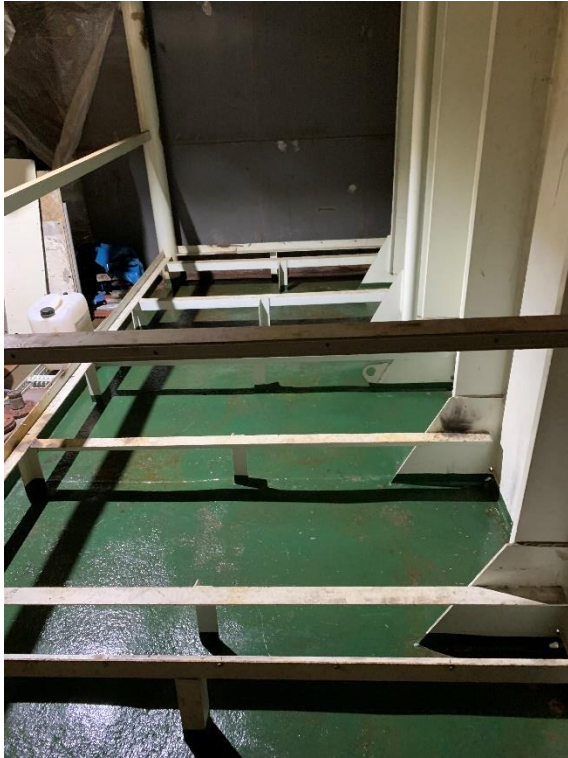












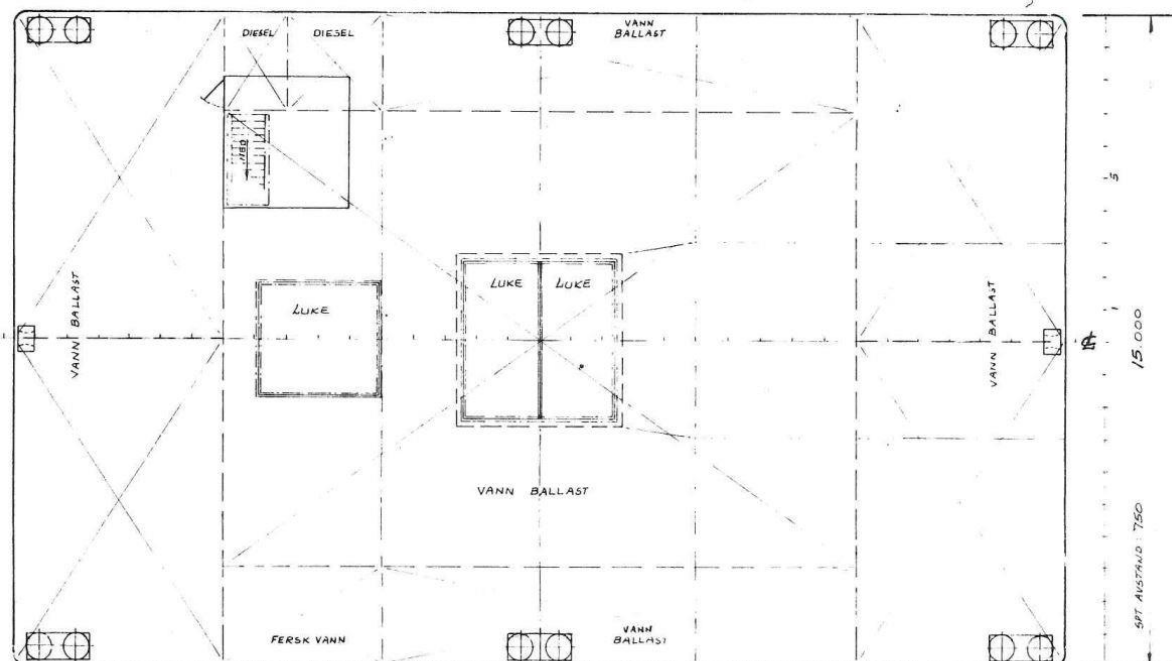
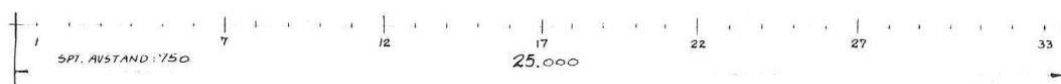
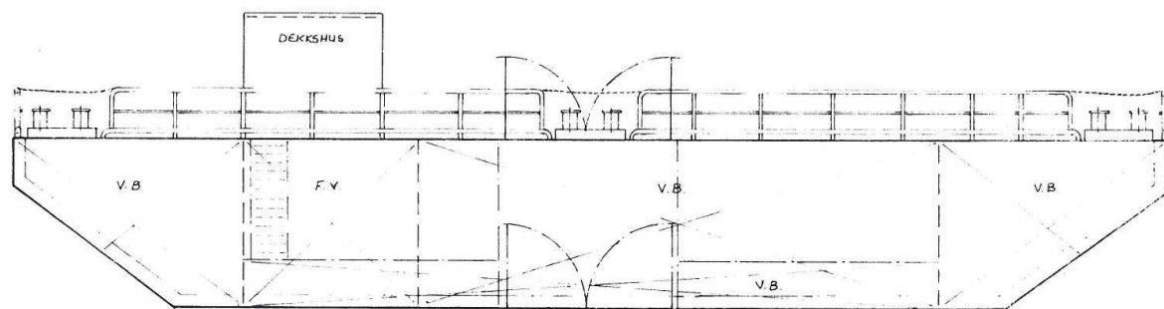












DEKSPLAN