

*Very compact workhorse which produces 4.2 tonnes bollard pull and provides accommodation for two crew. Present owner, to whom we sold the vessel recently, upgraded the vessel in many ways. She is in an immaculate condition!*

Type	DAMEN Stan Tug 1004	
Built	2016, Damen Shipyards	
Dimensions	10.67 x 4.52 x 2.15 mtrs	
Draft	1.60 mtrs	
Propulsion	Single fixed pitch propeller in nozzle	
Main engine	Volvo, type D9 MH/1	
Output	296 bhp at 1800 rpm	
Gearboxes	Twin Disc, type MG 5091, ratio 4.50:1	
Speed	8.7 knots	
Bollard pull	± 4.2 tons	
Displacement	29 tons (98% consumables)	
Bilge/fire-fighting system	Electrical driven Azcue CA50/2A 9 m <sup>3</sup> /h with connection to hydrants in engine room and on deck hand operated emergency bilge pump.	
Fuel oil system	Water separators, filters + SOS valve	
Cooling system	Closed cooling system (keel cooling channels)	
Sanitary/fresh water system	Speck 24V pressure set, Rheinstrom 24V sewage discharge pump	
Deck equipment	Anchor winch electrically driven 24 V Towing hook SWL 7.1 tonnes Fenders on side and stern Pushbow with rubber fender 2x coupling winches on aft deck	
Tank capacities	Fuel oil	1.62 m <sup>3</sup>
	Fresh water	0.21 m <sup>3</sup>
	Sewage	0.25 m <sup>3</sup>
Accommodation	The wheelhouse is resiliently mounted to reduce noise levels. The wheelhouse and below deck accommodation are completely insulated and finished with durable modern linings and composite/synthetic floor. Wheelhouse with a settee for two persons, a table, wash basin and a helmsman seat. Windows are fitted in aluminium frames. The store below deck is equipped with a toilet.	
Nav./comm. equipment	Radar, compass, GPS, echo sounder, VHF, AIS	
Class	Bureau Veritas I ✕ HULL • MACH Seagoing Launch	





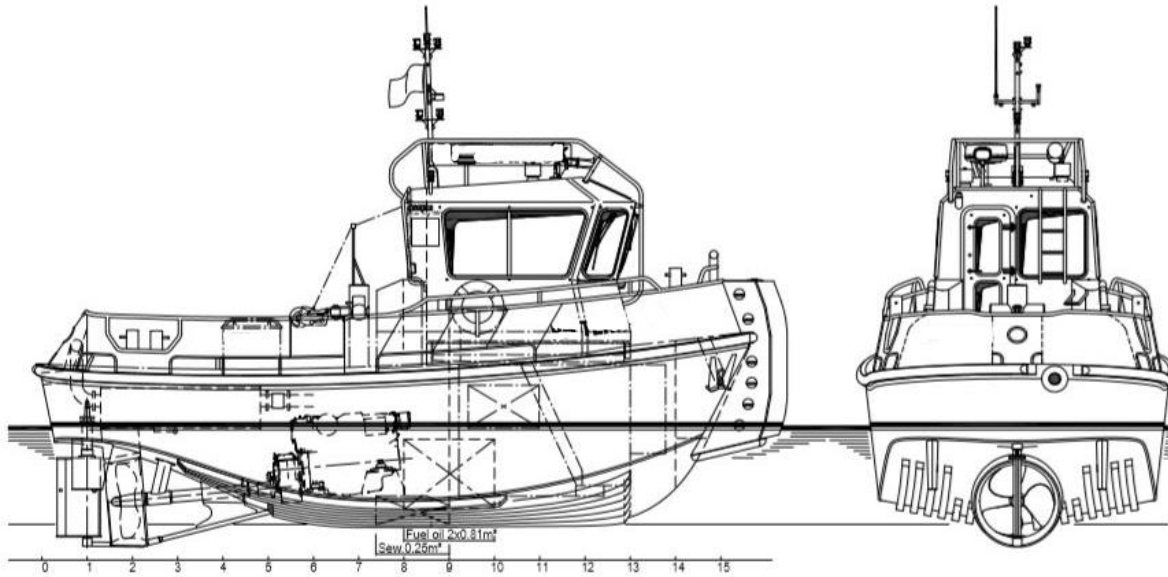




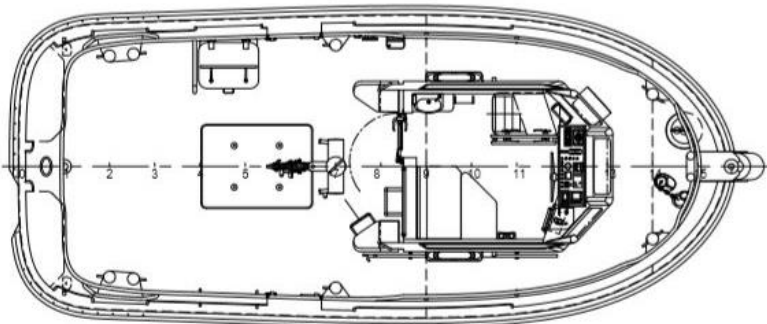




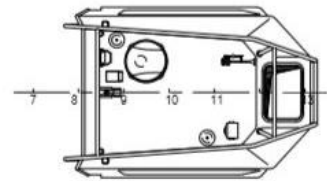
DAMEN STAN TUG 1004



Main deck



Top deck



Below Main deck

