

Multipurpose DP-1 crew supply vessel, holding 30 passenger seats and 17 bunks, completely fitted out as guard vessel boasting among other things a freshwater maker to allow for 70 days endurance. Comes with a spacious aft work deck with crane and windlass.

Type	Supply crew guard support vessel
Built	2012, re-furbished 2018
Dimensions	50.00 x 10.00 x 4.25 mtrs
Draft	± 2.40 mtrs
Propulsion	4x Fixed pitch propellers
Main engines	4x Cummins, type KTA50-M2
Output	7195 hp total
Speed	20 knots maximum
Transit speed	15 knots (high)
Transit speed	10 knots (medium)
Economical speed	6 knots
Type of fuel	MGO low Sulpher
Endurance	70 days
Tonnage	492 GRT / 147 NRT
Deck crane	2 tonnes
Free deck area	154 m ² (20 x 7.7 mtrs)
Deck cargo capacity	250 tonnes
Generators	2x 175 kVA, 440 V, 60 Hz
Bow thrusters	2x 200 hp
Tank capacities	Fuel oil 177.66 m ³ Fresh water 74.90 m ³
DP System	DP1 (<i>presently not operational</i>)
Crew accommodation	3x single cabins, 7x double cabins
Passenger capacity	30 seats
Nav./comm. equipment	According to GMDSS Area 3
Class	RINA C*, *AUT-UMS









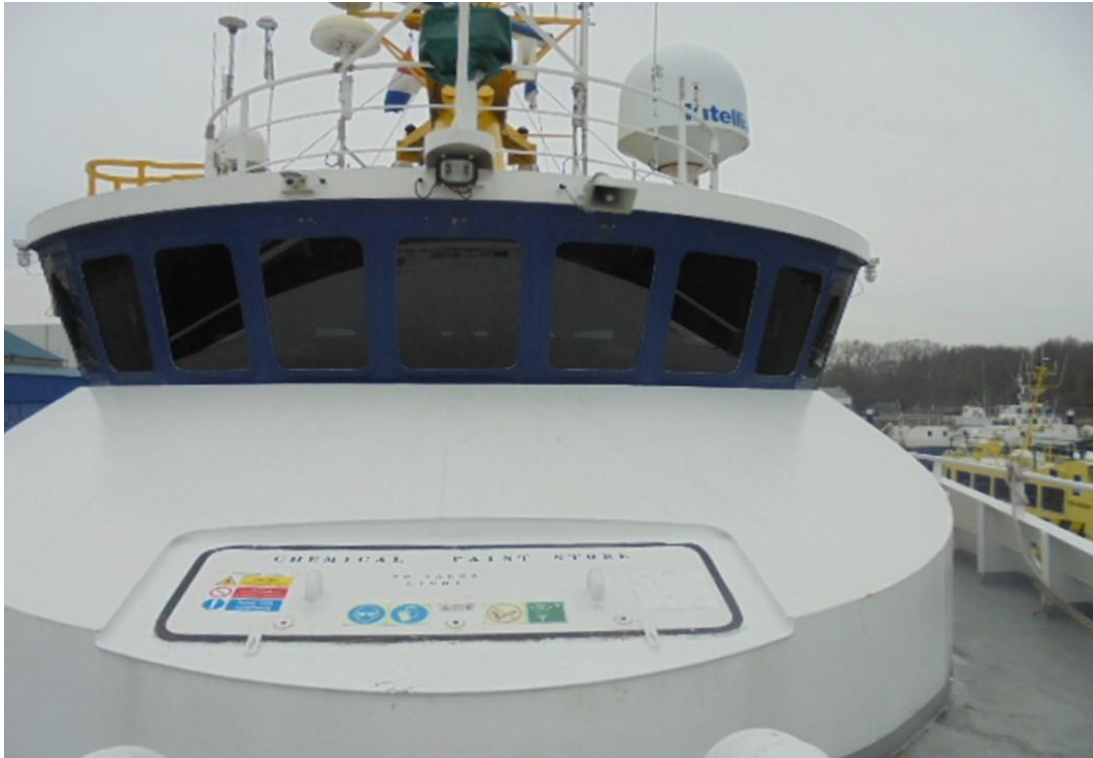








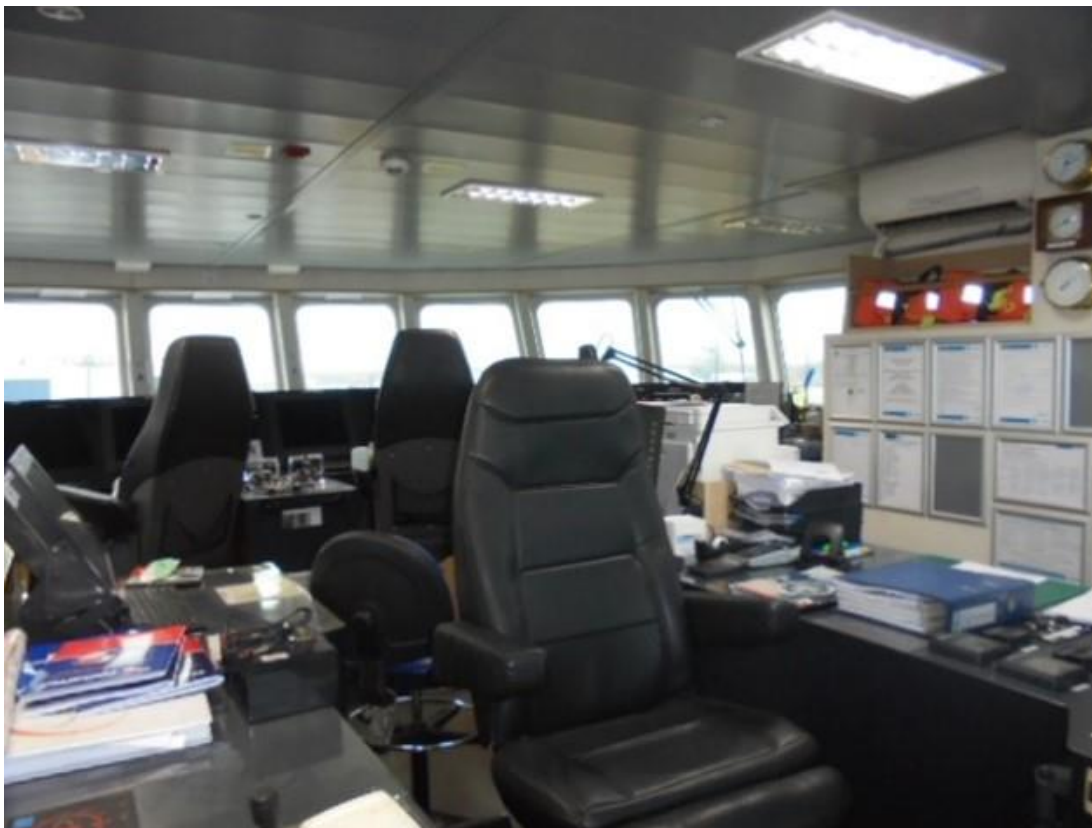


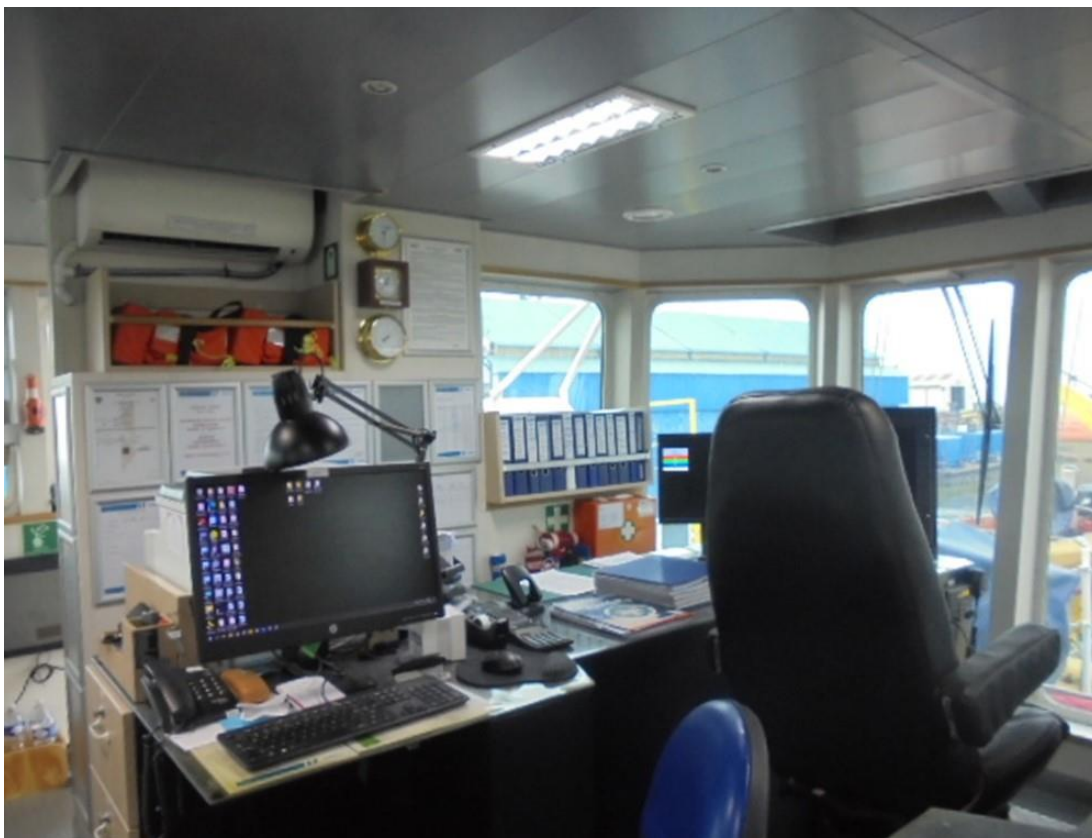


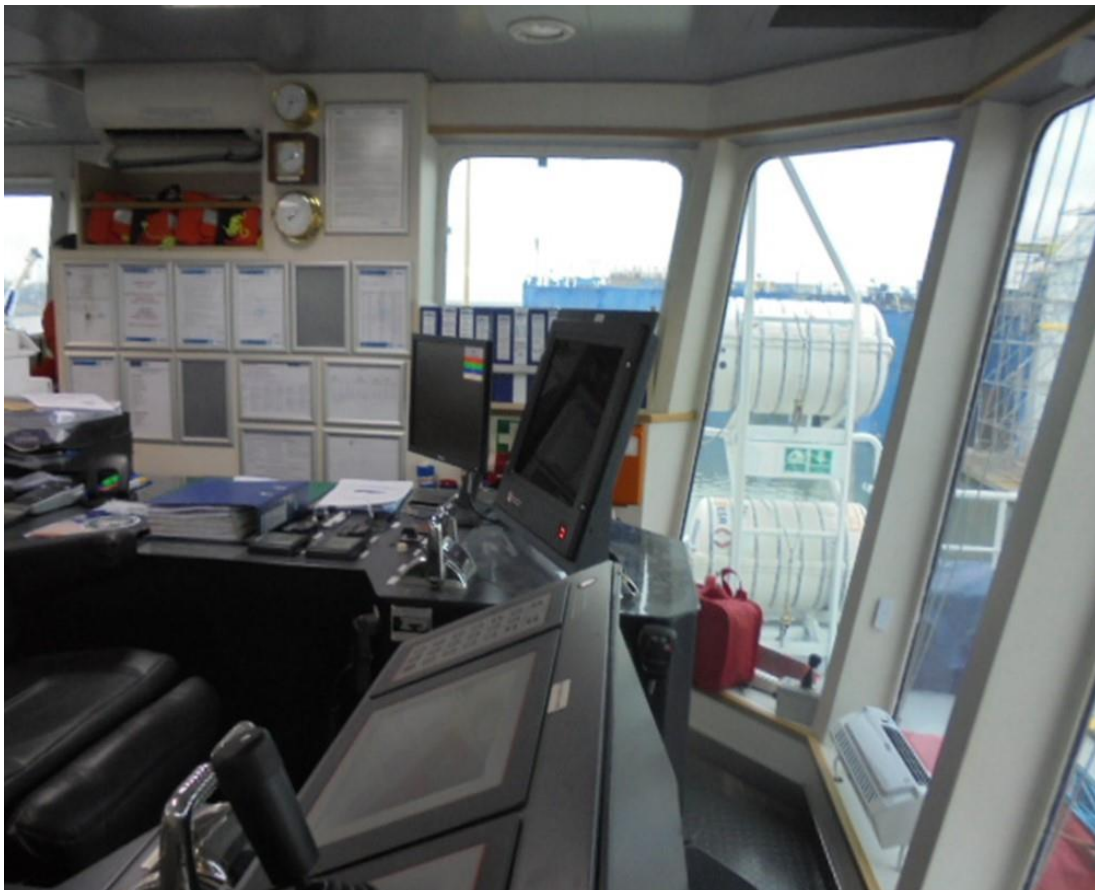






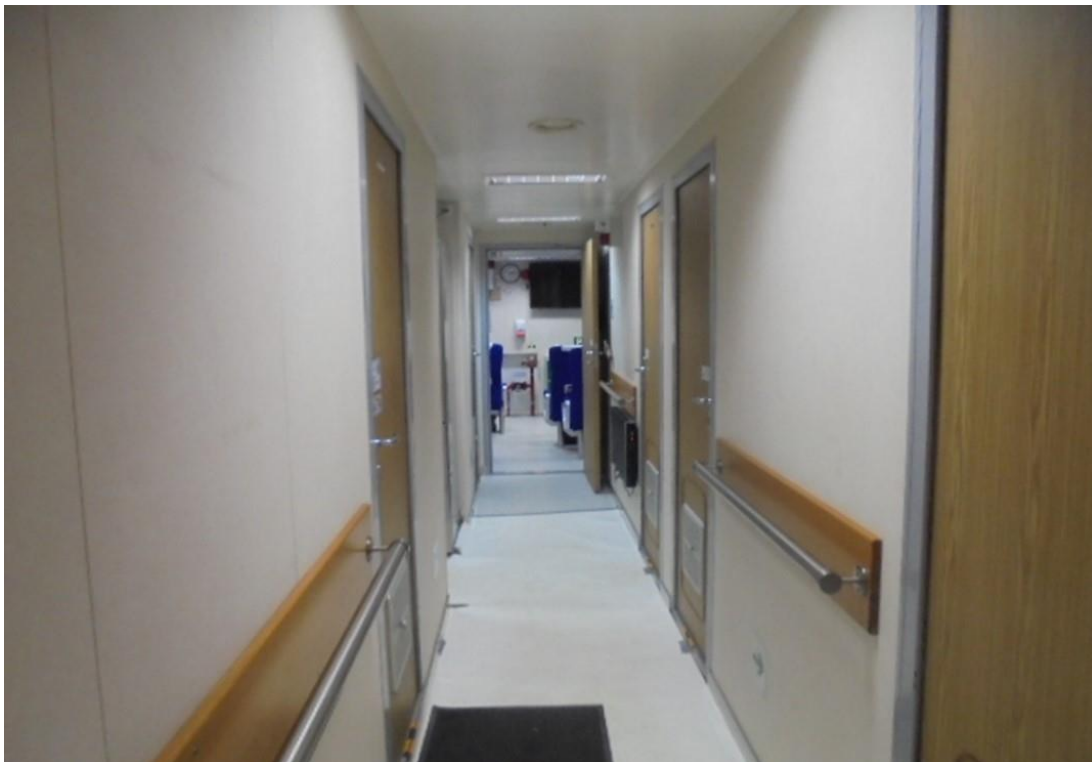






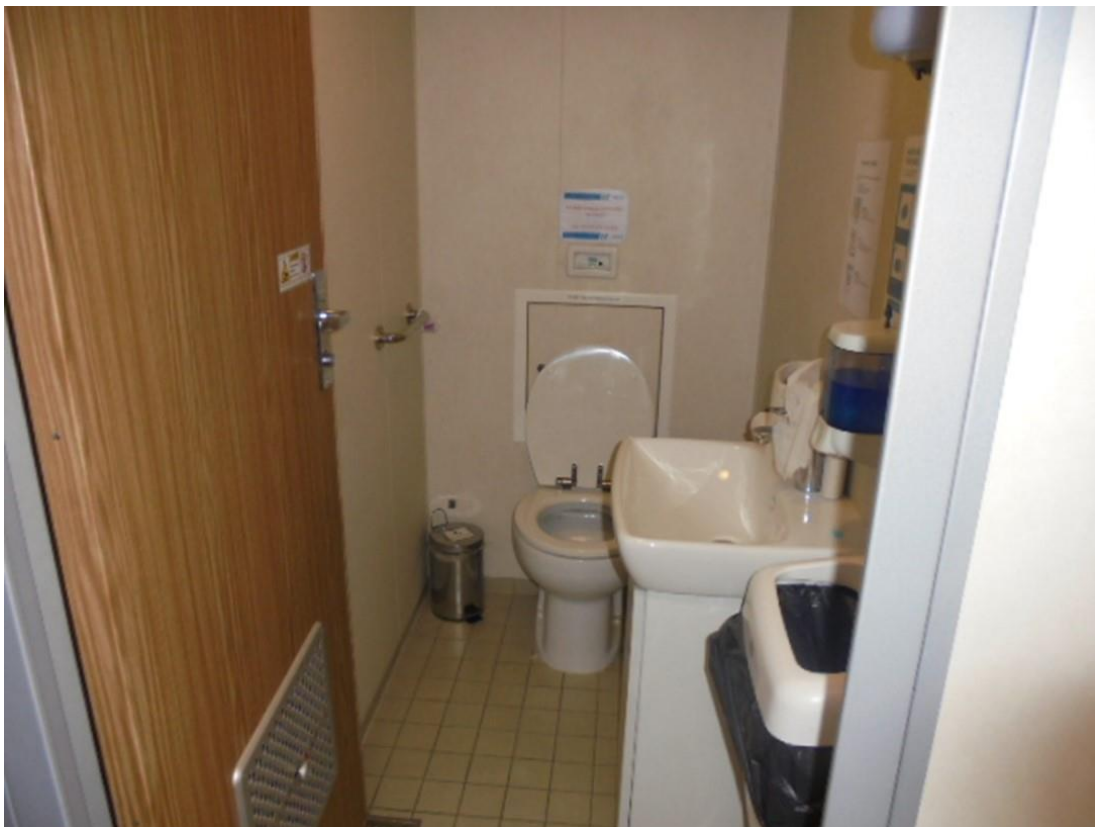












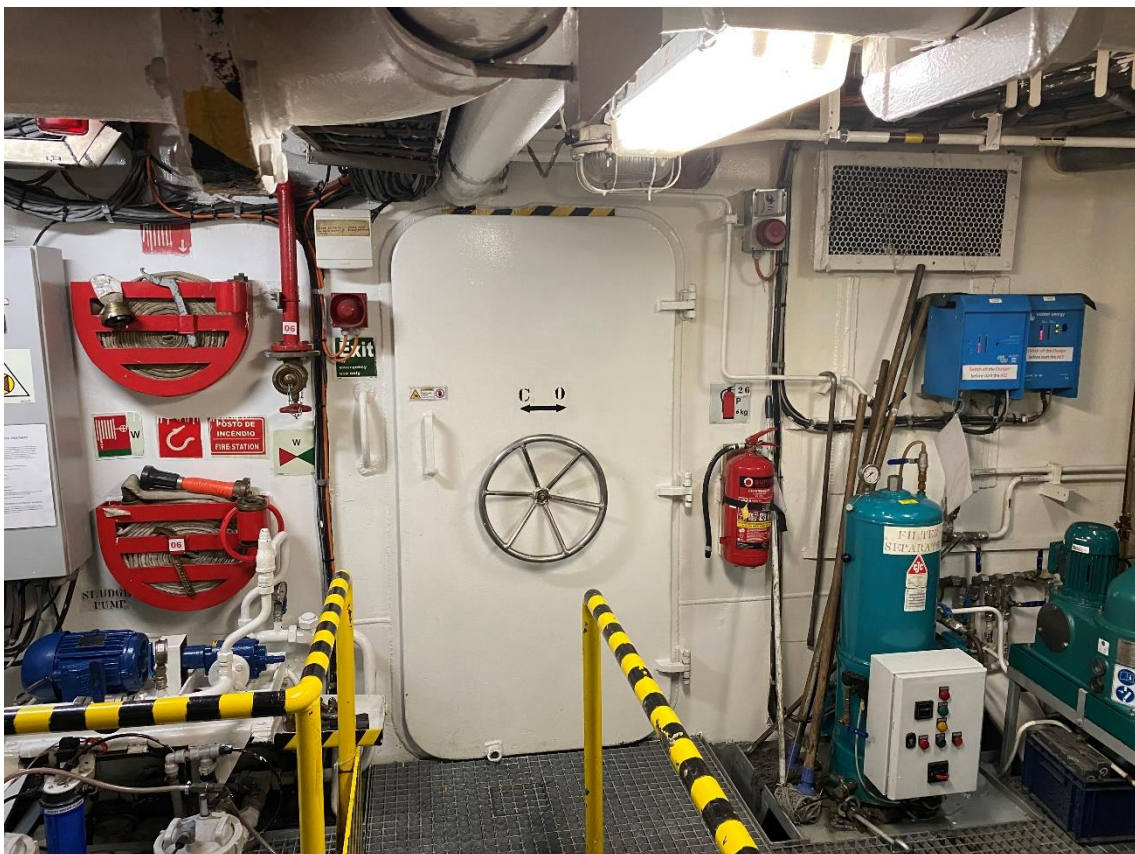




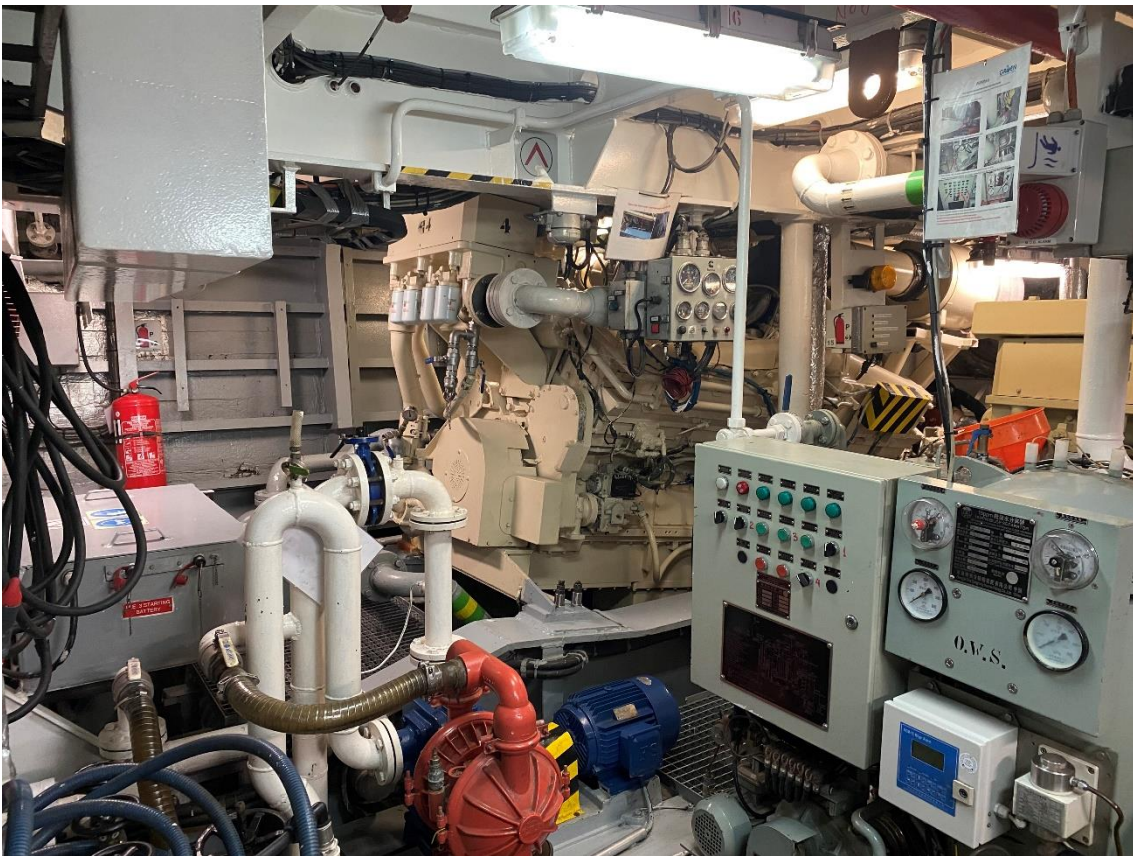














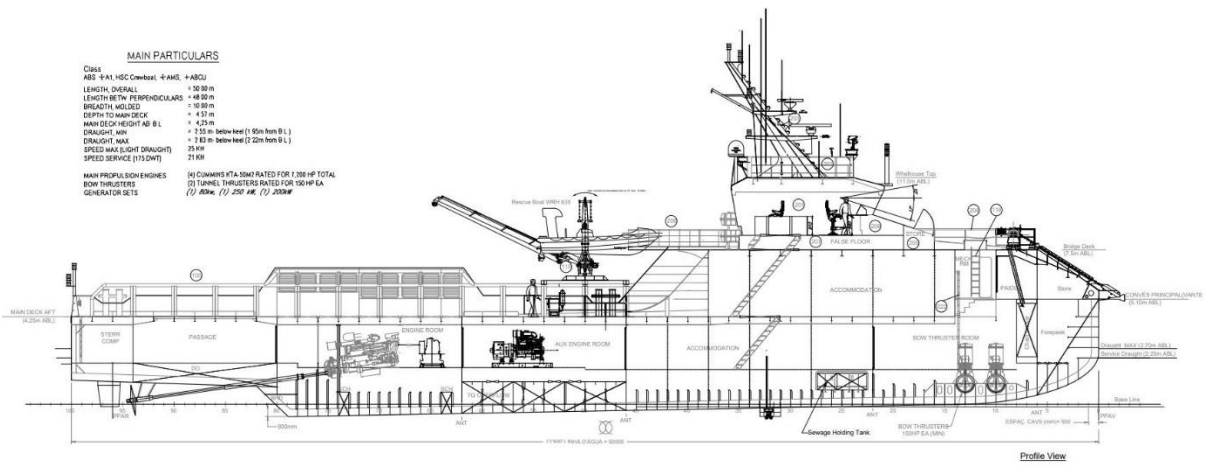




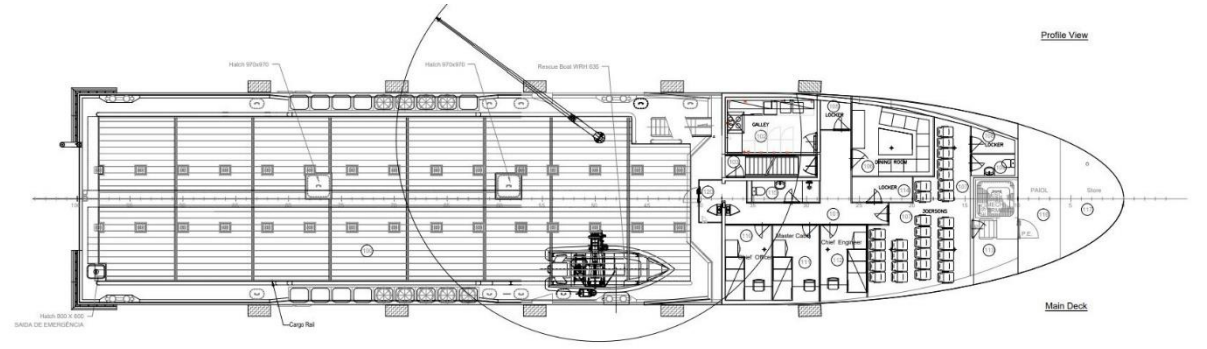
SUPPLY CREW GUARD SUPPORT VESSEL

MAIN PARTICULARS

Class ABS #11 HSC Combat # AMS # ABCU
 LENGTH OVERALL 48.80 m
 LENGTH BETWEEN PERPENDICULARS 48.80 m
 BREADTH MOULDED 10.80 m
 DEPTH TO MAIN DECK 4.37 m
 MAIN DECK HEIGHT AB B.L. 4.25 m
 DRAUGHT MIN 2.55 m below heel (1.90m from B.L.)
 DRAUGHT MAX 2.83 m below heel (2.20m from B.L.)
 SPEED MAX (LIGHT DRAUGHT) 25 kn
 SPEED SERVICE (17.5 DWT) 21 kn
 MAIN PROPELLION ENGINES (1) CUMMINS 17A150M1 RATED FOR 1200 HP TOTAL
 BOW THRUSTERS (2) TUNNEL THRUSTERS RATED FOR 150 HP EA
 GENERATOR SETS (2) 600kVA (1) 250 kW (1) 200kW

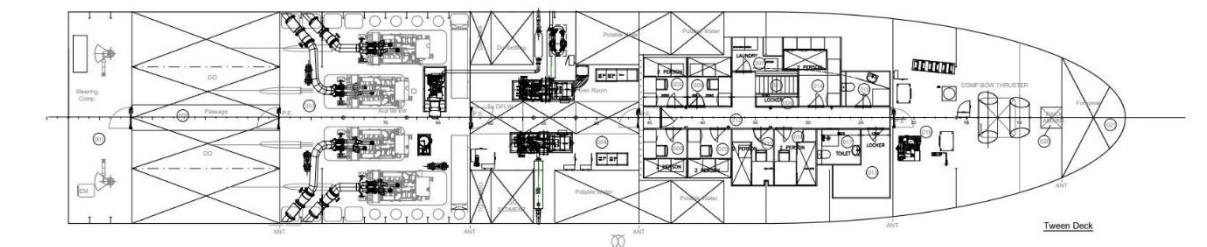


Profile View

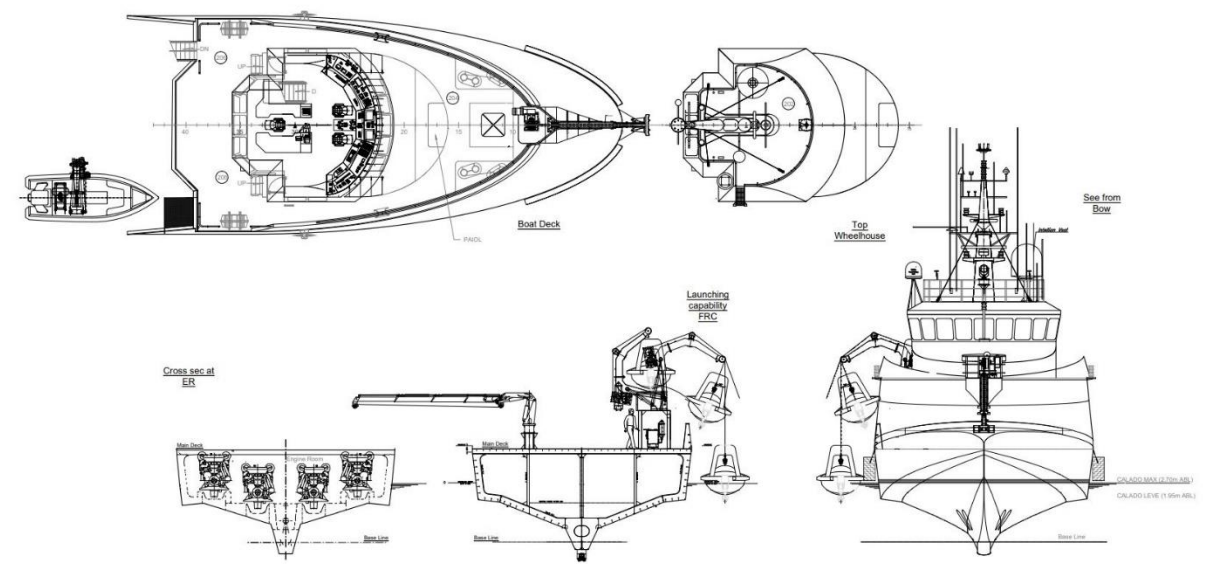


Profile View

Main Deck



Tween Deck



Boat Deck

Top Wheelhouse

Cross sec at ER

Launching capability FRC

See from Bow

See from Bow