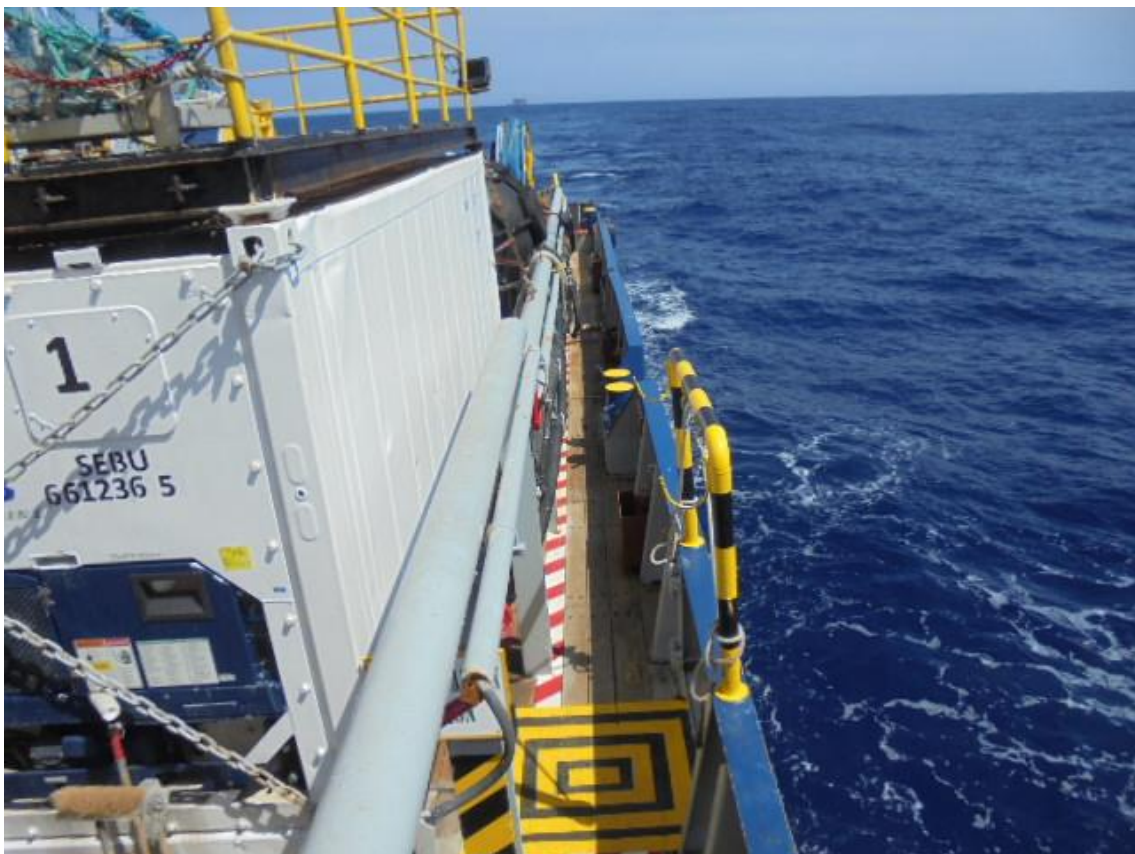
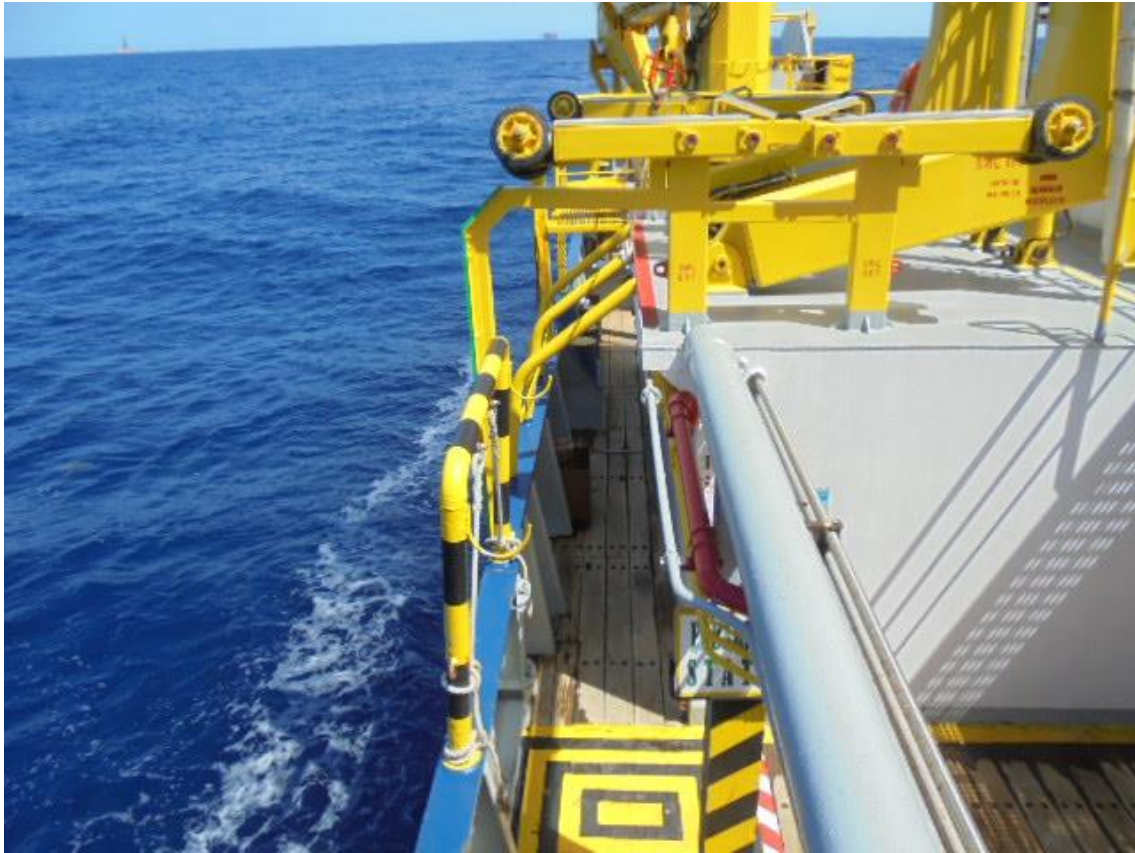


This Offshore Support Vessel is perfectly capable of conducting oil platform, construction and maintenance support, the supply of provisions and seismic equipment, bunker operations, (emergency) towing and crew transfer, but is also perfectly suitable to undertake standby duties.

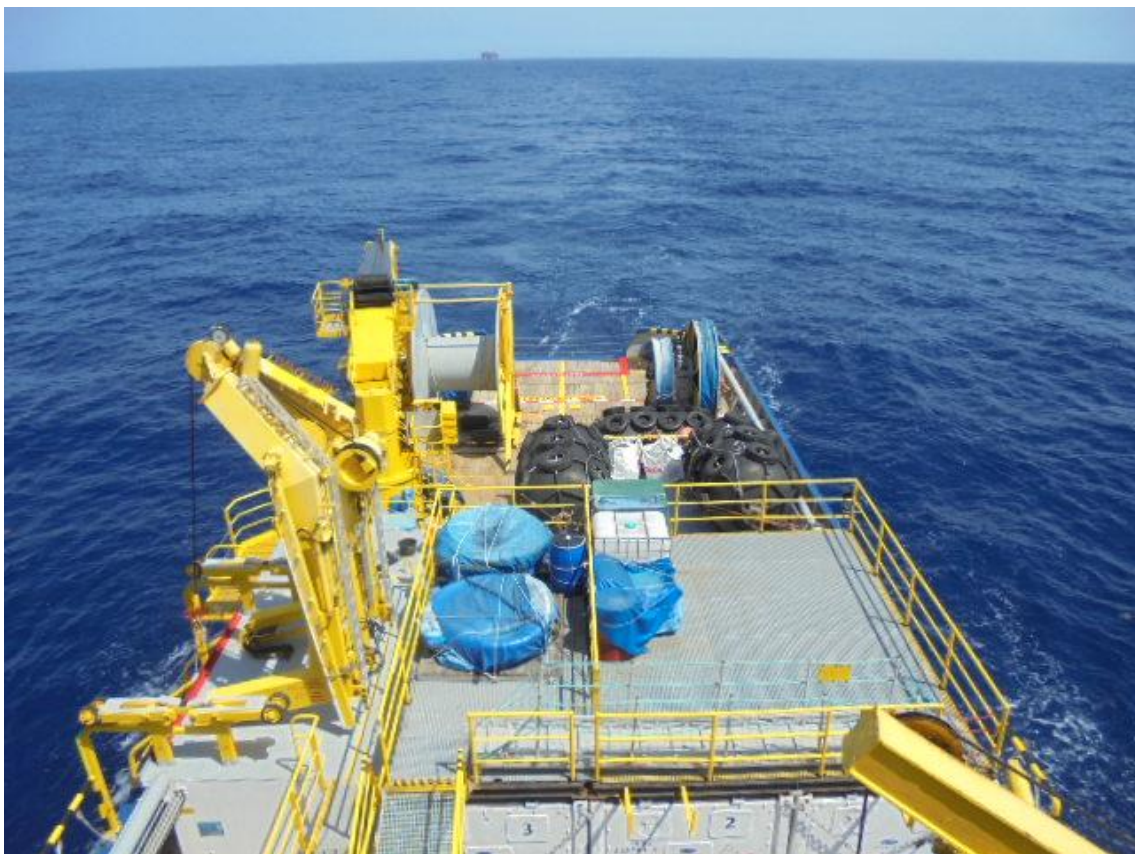
Type	Offshore Support Vessel
Built	2004, refurbished 2006
Dimensions	53.80 x 13.80 x 4.50 mtrs
Draft	3.80 mtrs
Propulsion	2x propellers in Kort nozzles
Main engines	2x Caterpillar, type 3515
Output	3150 hp total at 1800 rpm
Speed	13.0 knots maximum 10.5 knots eco speed
Consumption	± 11.8 m ³ at maximum speed ± 8.5 m ³ at eco speed
Endurance	60 days
Bollard pull	36.7 tonnes
Tonnage	1058 GRT / 317 NRT
<u>Deck equipment:</u>	
Deck crane	TTS, type GP320, 10 tonnes at 15 mtrs
Windlass	Hydraulic 5 tonnes SWL@15 m/min. Brake hold. 30.05 tonnes
Capstans	2x Hydraulic 5 tonnes each
A-frame	Davit, type PLR-12004, 12 tonnes
MOB crane	Sekwang M.M., 1.65 tonnes SWL
Tugger winch	Hydraulic 10 tonnes
Reefer capacity	3x TEU on deck
Free deck area	103 m ² ; 348 m ² without deck equipment
Generators	2x Cummins, type N4-DM, 260kW
Harbour generator	Cummins, type 6CT8.3-D(M) 122kW
Bow thruster	Caterpillar, type 3412FFP Tunnel Type 5 tonnes
Tank capacities	MGO low Sulphur 850 m ³ Fresh water 158 m ³ Lube oil 11 m ³
Fresh water maker	4.8 m ³ / 24 hours
Storage capacity	Cool store 7.00 m ² Freeze store 6.20 m ² Dry storage 56.45 m ³
Accommodation	Cabins 4x 1 pers., 3x 2 pers., 4x 4 pers., 4x 6 pers. In total 50 berths.
Nav./comm. equipment	According to GMDSS Area 3
Class	RINA C ✕





















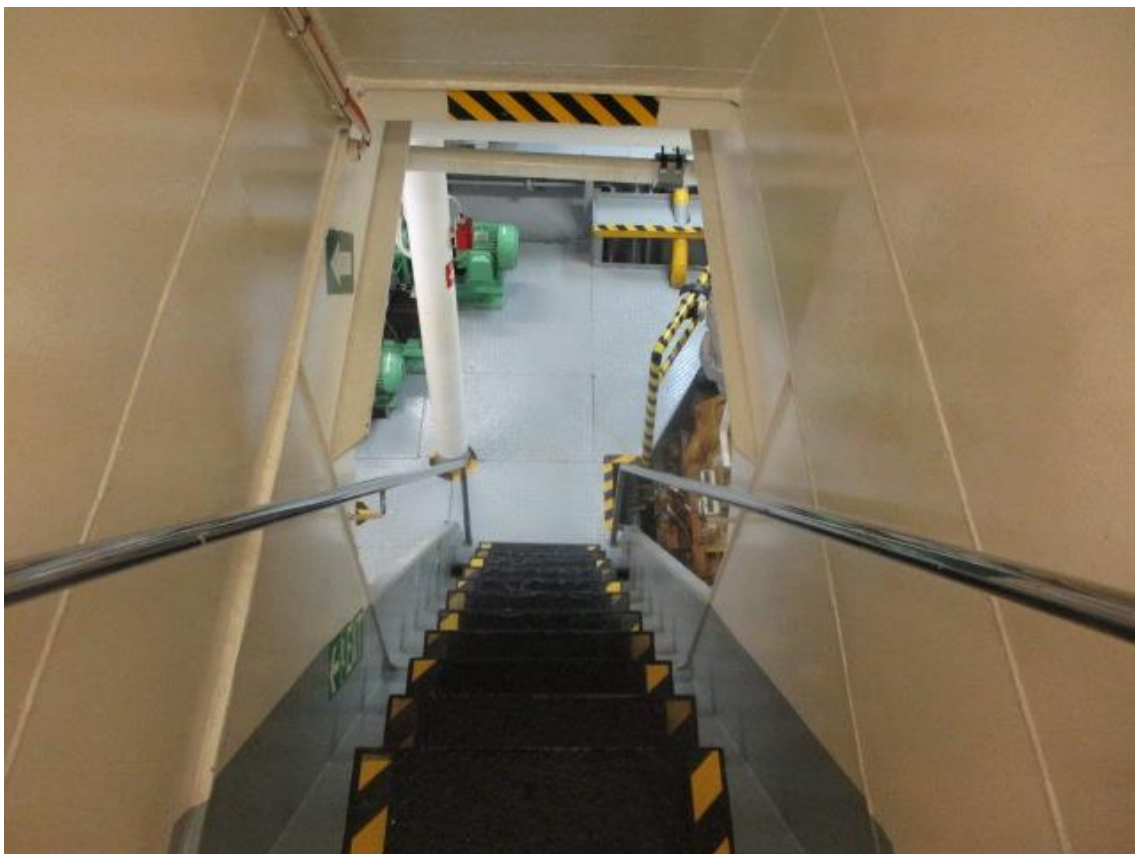








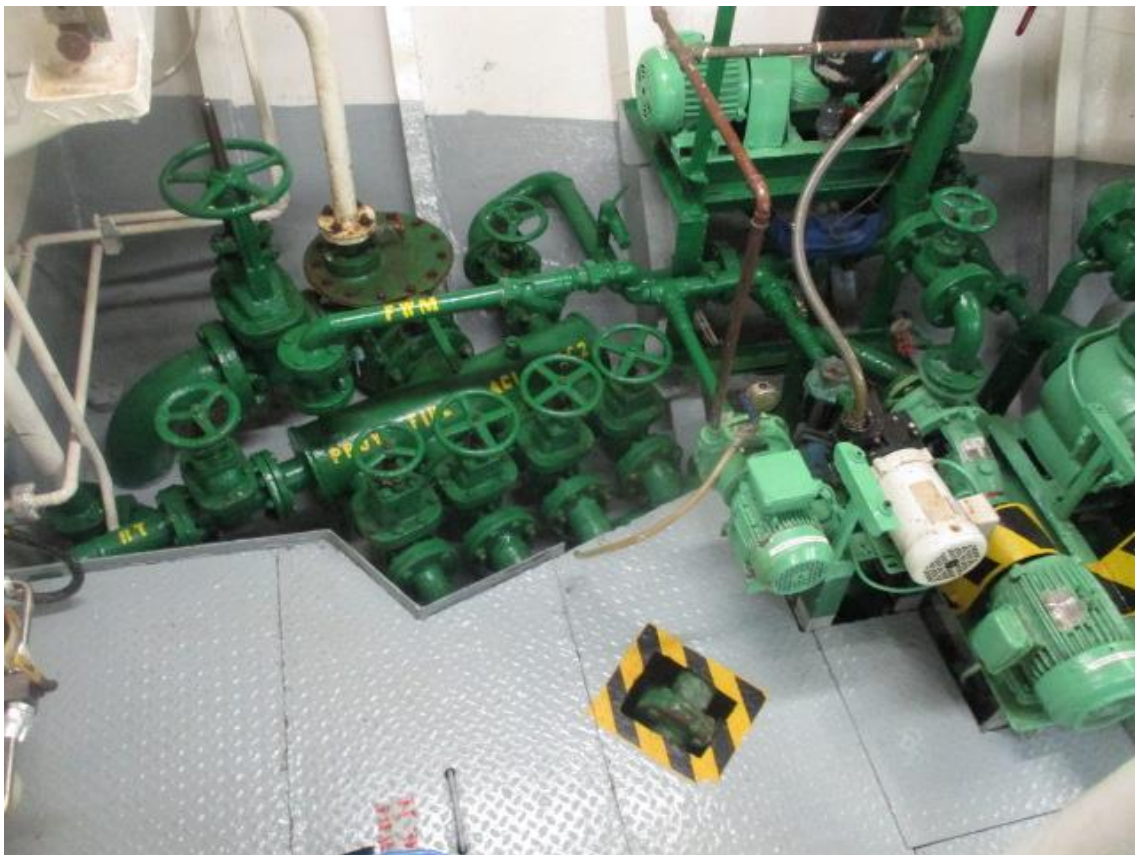










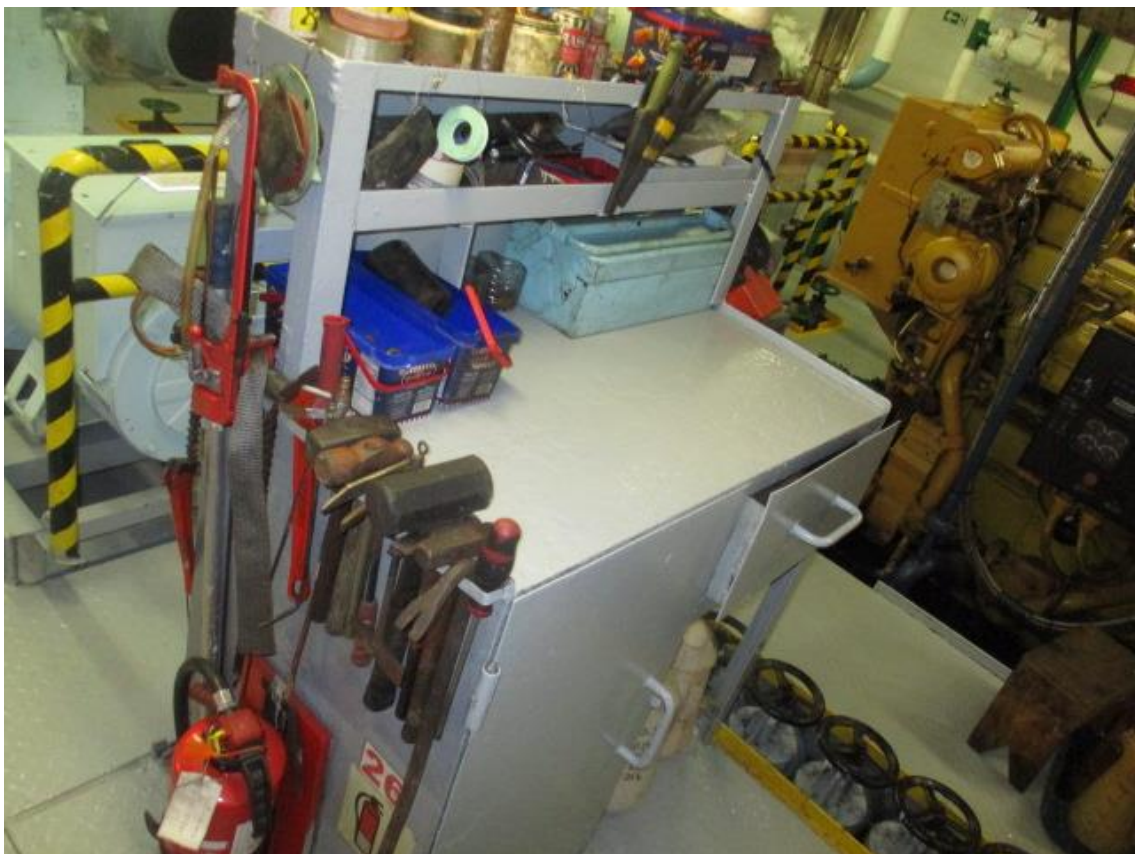














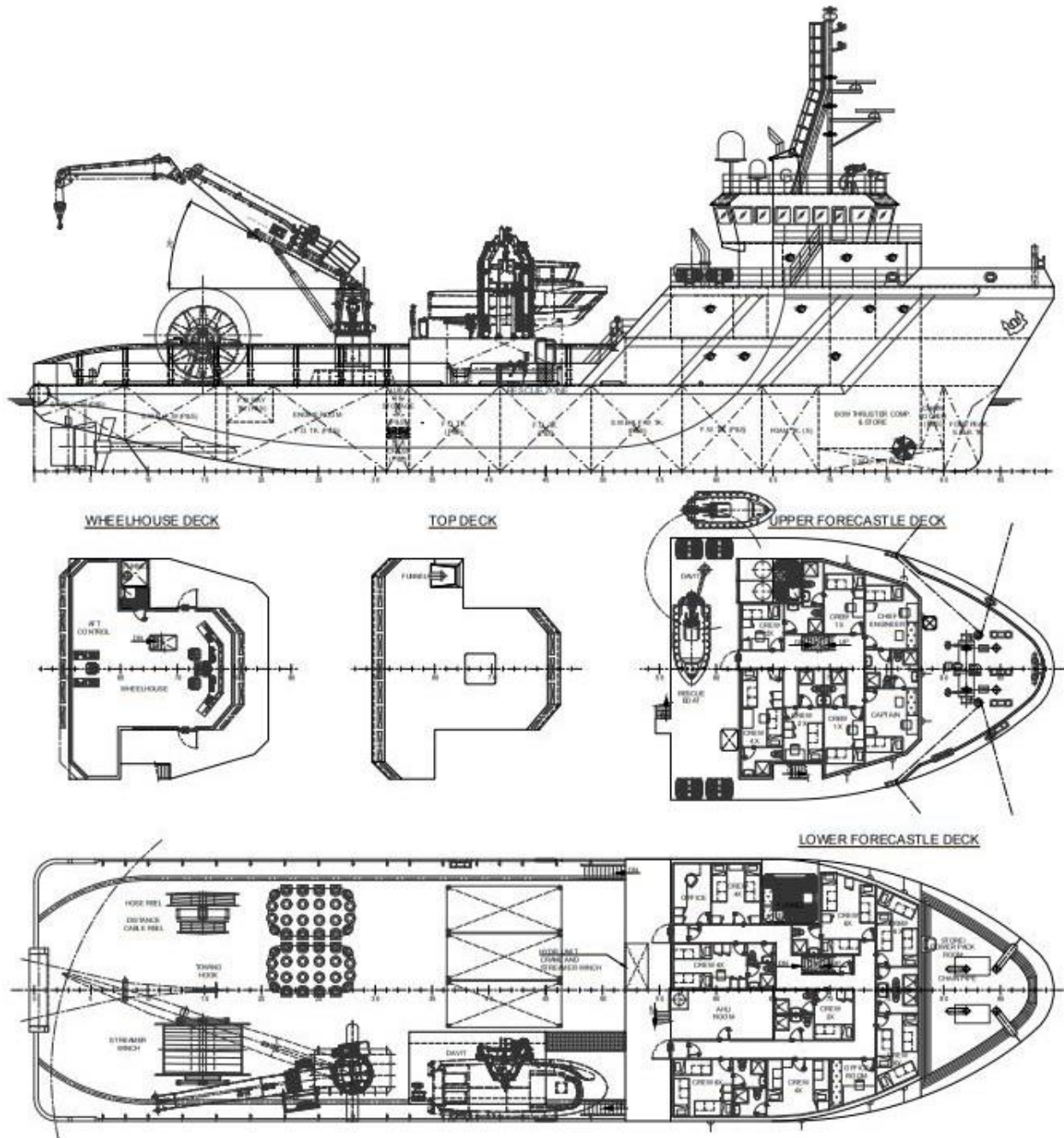












OFFSHORE SUPPORT VESSEL

