

Shoalbuster 3511

'DMS OSPREY'



PICTURE OF SIMILAR VESSEL

GENERAL

Building year	2010
Classification	Bureau Veritas I 3/3 #HULL * MACH Tug Unrestricted Navigation AUT-UMS
Flag	Dutch

DIMENSIONS

Length o.a.	35.25 m
Beam moulded	11.60 m
Depth	5.25 m
Draft max.	4.40 m
Tonnage	614 GT / 184 NT

TANK CAPACITIES

Fuel oil	374.4 m ³
Fresh water	42.0 m ³
Hydr. Oil	3.7 m ³
Lub oil	4.4 m ³
Bilge water	2.2 m ³
Dirty oil	4.4 m ³
Sewage	23.6 m ³
Gear oil	2.2 m ³

PERFORMANCES (TRIALS)

Bollard pull	70 t
Speed	11.6 kn

PROPULSION SYSTEM

Main engines	2x Caterpillar, 3516 B TA
Total power	3840 kW (5150 hp) at 1600 rpm
Propulsion	2x fixed pitch propellers in nozzles
Diameter	2700 mm
Gearbox	Reintjes WAF 873 / 7.455 : 1
Bowthruster	294 kW (400 hp), hydraulically driven

AUXILIARY EQUIPMENT

Auxiliary engines	2x Caterpillar C-9 TA
Generator	Leroy Somer, LSAM 46.2 M5
Output	2x 150 kVA 50 Hz, 230/400 V
Hydraulic set	Caterpillar C18 TA, 500 kW at 2100 rpm
Fuel separator	Alfa Laval type MAB 104, 1950 ltr/hr
Transfer pumps	Fuel 50 m ³ /hr at 4.8 bar Fresh water 50 m ³ /hr at 4.8 bar

DECK LAY-OUT

Anchor	2x 375 kg (H.H.P.)
Deck crane	Heila 170-4S-L, remote controlled, capacity: 18,2 tons at 8,03 m 7,9 tons at 15,93 m
Anchor winch	Ridderinkhof, CAW-H-152, capacity 5 tons at 10 m/min.
Ah towing winch	Ridderinkhof AHW-H-1000, capacity: P= 50 tons at 10 m/min. P=100 tons at 5 m/min. B=100 tons
Tugger winch	Brevini, 8 tons at 4.5 m/min.
Towing pins	Karm Fork, 160 tons SWL
Fifi pump	1200 m ³ /hr
Fifi monitor	2x monitor Albach EL 377
Stern roller	5000 mm x 980 mm, 100 tons SWL
Spark arrestors	fitted (external)
Towing wire storage reel	Electrical driven, 500 m

ACCOMMODATION

Heated and air-conditioned living spaces for 15 persons, consisting three single crew cabins and six double crew cabins, a galley, a mess room and sanitary facilities.

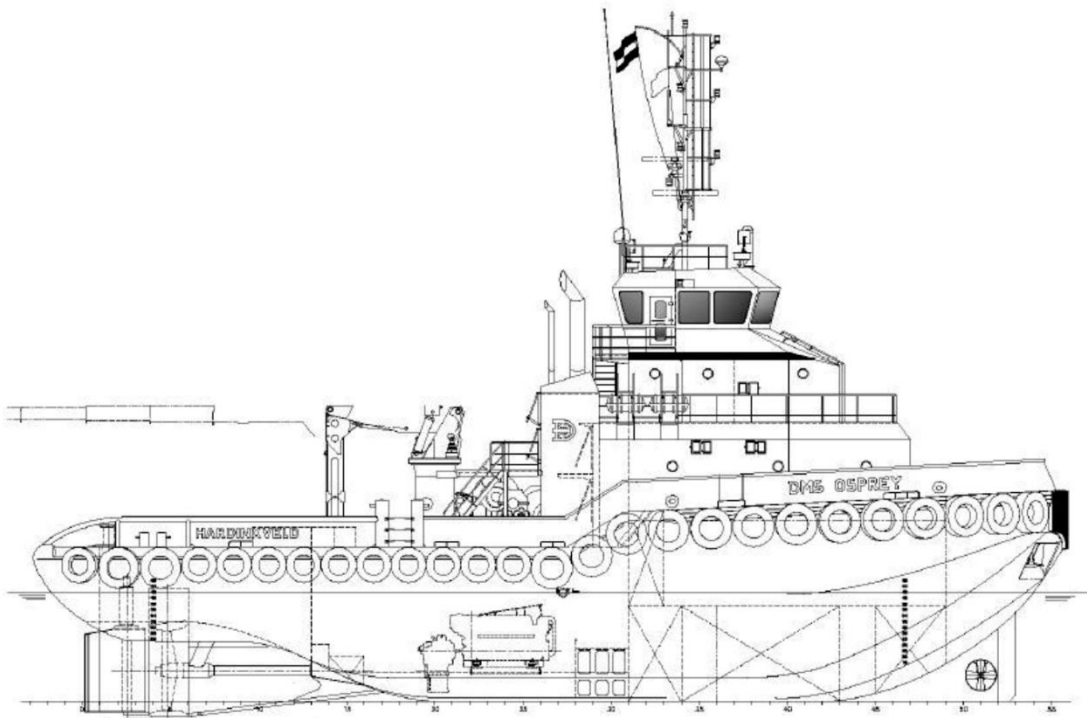
NAUTICAL AND COMMUNICATION EQUIPMENT GMDSS A3

Searchlights	2x 1000 W
Navigation equipment	Magnetic compass, gyro compass, 2x radar, GPS, autopilot, echo sounder, speedlog, watch alarm, chart plotter.
Communication	3x VHF, 2x handheld VHF, Navtex, Inmarsat-C, SSB, Iridium, intercom, PA-system, LRIT, AIS, SSAS.
Additional equipment	TV antenna satellite system.

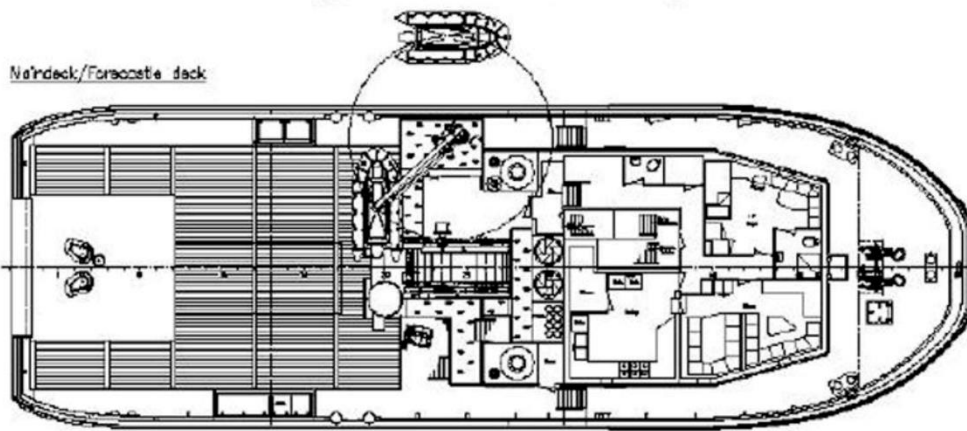
Ø = Optional equipment

Shoalbuster 3511

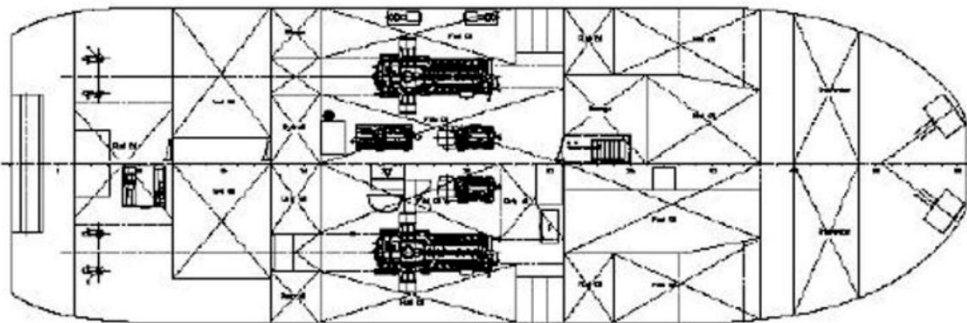
'DMS OSPREY'



Maindeck/Forecastle deck



Below maindeck



DAMEN

Damen.com

© No part of the leaflet may be reproduced in any form, by print, photoprint, microfilm, or any other means, without written permission from Damen Shipyards Group