

Shoalbuster 3209 FiFi 1

'DMS KITE'



PICTURE OF SIMILAR VESSEL

GENERAL

Yard number	571809
Delivery Date	March 2020
Basic functions	Towing, mooring, pushing, anchor handling, dredging support
Classification	Bureau Veritas: 1 * Hull • MACH Tug (design bollard pull=50.3t); Firefighting 1 - water spraying; Anchor handling Unrestricted Navigation • AUT-UMS
Regulations	Dutch Shipping Inspectorate (ILT), unrestricted service
Flag	Saint Vincent and the Grenadines
Owner	Damen Marine Services

DIMENSIONS

Length overall	32.27 m
Beam molded	9.10 m
Beam overall (Incl. fender)	9.35 m
Depth molded (at ½ L)	4.40 m
Max. Draught	3.30 m
Deadweight @ max. draught	200 t
Deck area	80 m ²
Gross tonnage	335 GT

TANK CAPACITIES

Fuel oil	218.0 m ³
Fresh water	40.8 m ³
Lubrication oil	7.3 m ³
Hydraulic oil	3.0 m ³
Dirty oil	3.7 m ³
Bilge water	4.3 m ³
Sewage	6.4 m ³

PERFORMANCES

Bollard pull avg.	49.2 t
Speed avg.	12.3 kn

PROPULSION SYSTEM

Main engines	2xCaterpillar Type 3512C TTA/HD
Total Power	2610 kW (3500 bhp) @ 1600 rpm
Gearboxes	2xReintjes WAF 773/6.44:1
Propulsion	2xPromarin fixed pitch propellers
Diameter	2x2250 mm v.d. Giessen optima nozzles
Bow thruster	257 kW (350 bhp), hydraulically driven

AUXILIARY EQUIPMENT

Main generator sets	2x Caterpillar C4.4 TA
Capacity	2x 86 kW, 107.5 kVA, 50 Hz, 230/400VAC
Hydraulic	1x Caterpillar C18 TA
Capacity	1x 372 kW @ 1800 rpm
Fire-fighting 1 with water spray pre-wetting	Caterpillar C32 ACERT 970 kW @ 1800 rpm with FFS pump, capacity 2800 m ³ /hr
FiFi monitor	2x FFS electrical controlled from the wheelhouse. Throw length / height: 120m /45m

DECK LAY-OUT

Anchor	2x 337 kg HHP
Chain	2x 220m, 19 mm stud-link, U2
Anchor winch	1x Kraaijeveld, KAB-1-H-19D/19D
Deck crane	1x Heila HLRM 170-4SL 7.9 ton @ 15.93 m, 18.2 ton @ 8.03 m
Deck crane winch	5 ton, 45m drum wire capacity
Towing/Anchor handling winch	Kraaijeveld KAW-30-H-TR/TR Towing pull 50 ton @ 12.5 m/min @ 1 st layer, Wire cap. 1x 800m Ø44mm, holding force: 150 ton Anchor handling pull 100 ton @ 7 m/min @ 1 st layer Wire cap. 1x720m Ø44mm, holding force: 150 ton
Tugger winch	1x Dromec HPV-12000, 12 ton @ 20 m/min @ 1 st layer
Towing pins	1x WK-Hydraulics 50T-2F-1CS Towing pins 50 ton SWL, chain stopper 75 ton SWL
Stern Roller	Ø980 mm, 100 ton SWL

SECONDARY SHIP SYSTEMS

Transfer pumps	2x VWSI 8020, 50m ³ /hr @ 4.8 bar, 1x FW, 1x FO
Fuel oil separator	1x Alfa Laval, MIB 303, 760 l/h @4.8 bar
Bilge water separator	1x FACET CPS-2.5MKIII, 500 l/hr
Compressor	1x ABAC B-4900B, 39.2 m ³ /h at 11 bar, 500L tank

ACCOMMODATION

Heated and air-conditioned living spaces for 9 (+2 extra) persons, consisting of a captain's cabin, three double crew cabins, two single officers cabins with each one extra bunk. A combined galley and mess and sanitary facilities are provided.

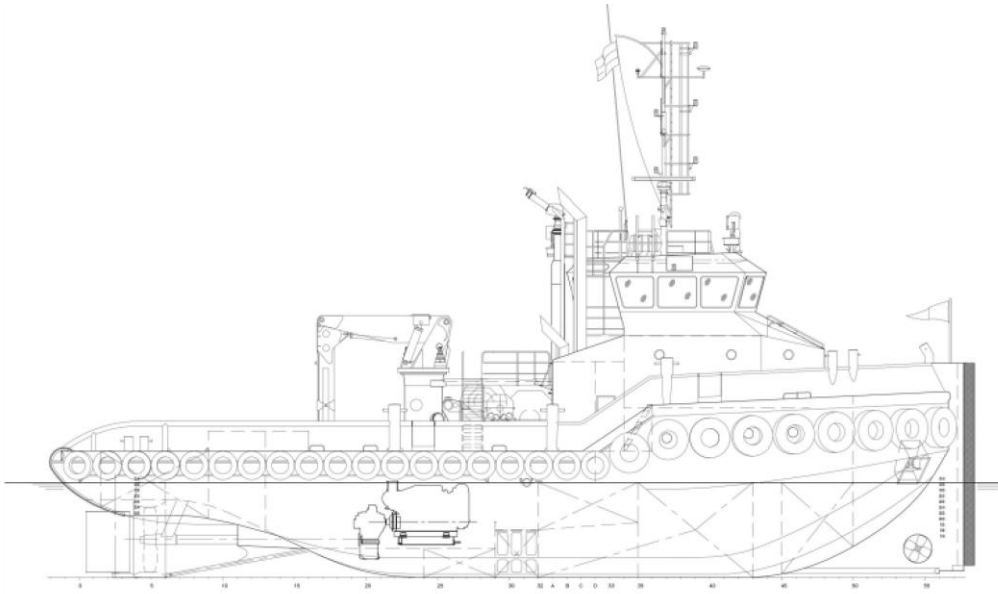
NAUTICAL AND COMMUNICATION EQUIPMENT

Searchlight	2x Pesch 2000W
Radar	2x Furuno, FAR-2117
Magnetic compass	1x Cassens & Plat, Reflecta 1
Autopilot	1x Simrad, AP 70
Gyro compass	1x Anschutz STD-22
DGPS	1x Furuno, GP-170
Dual ECDIS	1x FMD-3100
Echo sounder	1x Furuno, FE-800
Speed log	1x Furuno, DS-80
Intercom	1x Phonetech CIS 3101
Watch alarm	1x Furuno BR-500
VHF radio telephone	2x Sailor, RT6222 with DSC
SSB	1x Sailor 6310
NAVTEX	1x Furuno, NX-700
Handheld VHF	2x Jotron, TR30
Inmarsat-C	2x Sailor 6110
AIS	1x Furuno, FA-170
V-SAT	1x Cobham Sailor 800
Wind indicator	1x Obsermet OMC115
TV system	1x Seas-6000

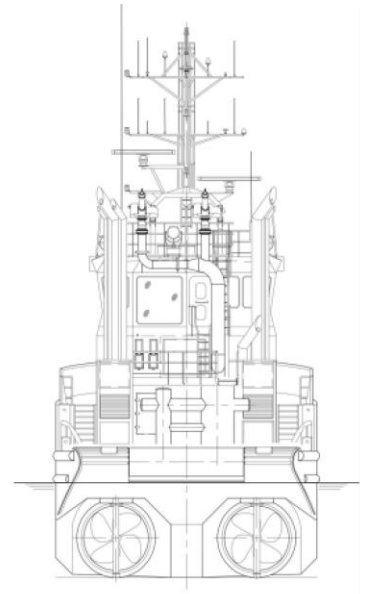
Ø = Optional equipment

Shoalbuster 3209 FiFi 1

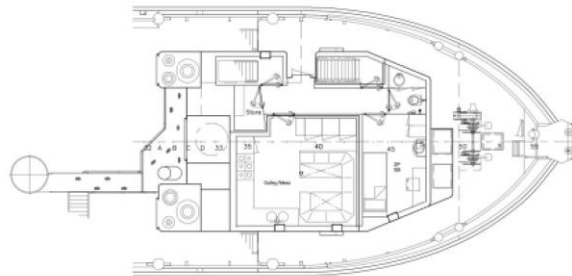
'DMS KITE'



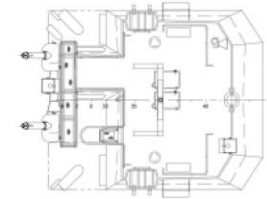
Forecastledeck



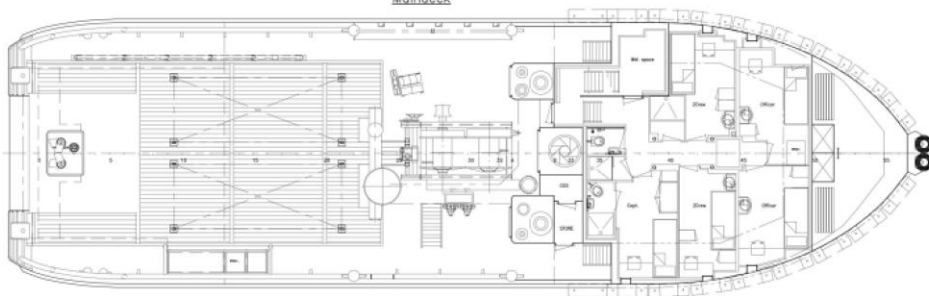
Topdeck



Maindeck



Wheelhousedeck



Below maindeck

