

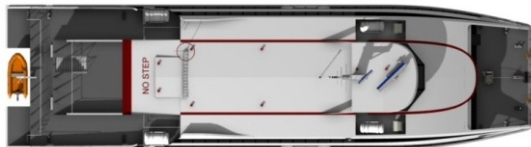


SUMMARY & CONCLUSION



The Damen Fast Ferry 4212 is the ideal Fast Ferry for coastal routes. Its customized design is based on proven hull design, in-service experience and exceeds the requirements with regards to passenger comfort and speed.

All of the vessels are built to comply with the 2000 HSC Code to insure the safety of the passengers and crew.



Damen shipyards has a history for building proven vessels using standard components. With ISO 9001 quality certification and one of the best after sales services in the world.



CONTACT DETAILS:

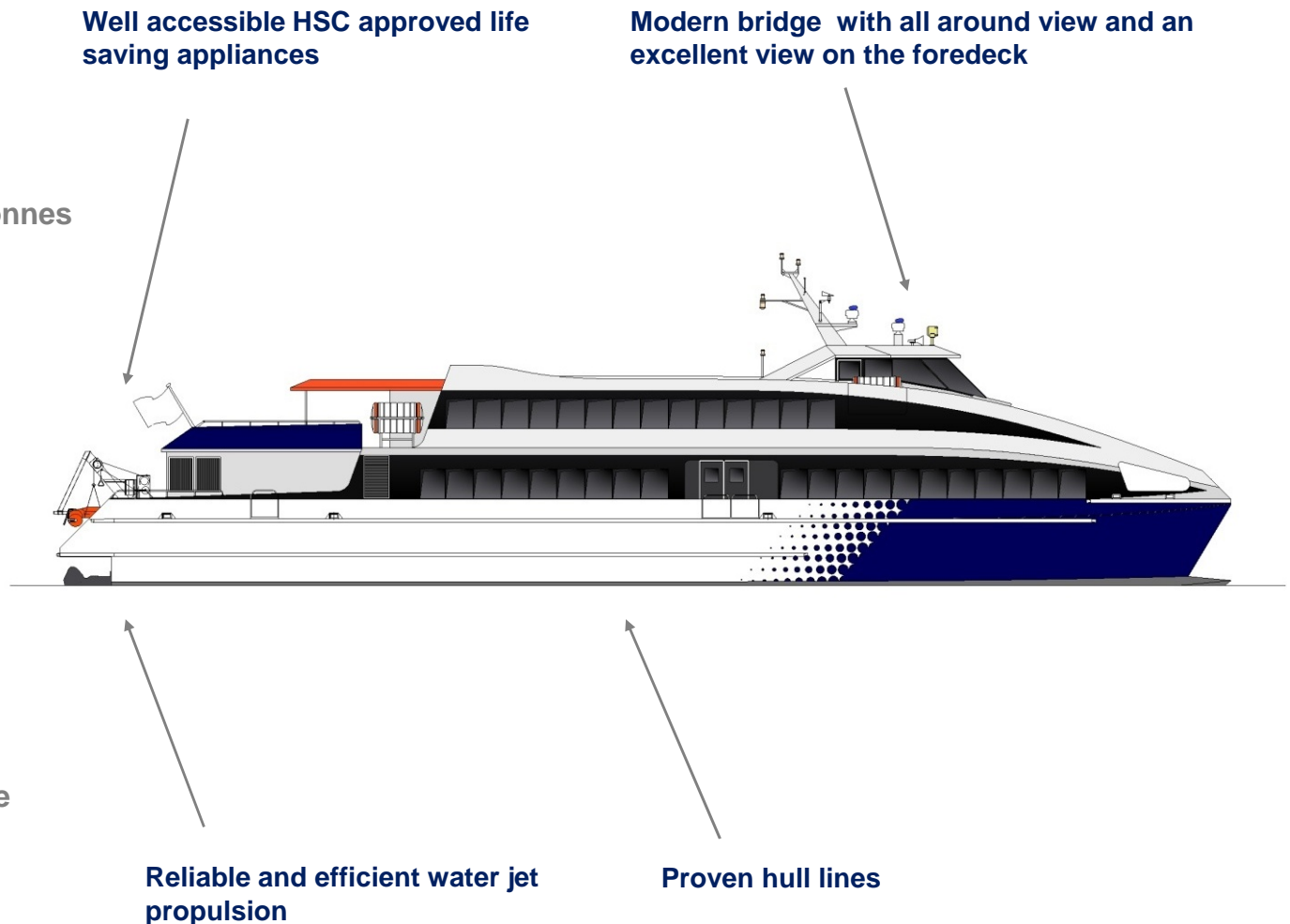
Damen Shipyards Gorinchem
PO Box 1
4200 AA Gorinchem
The Netherlands

Phone +31 (0) 183 63 99 11
Fax +31 (0) 183 63 95 05
E-mail ferries@damen.com
Website www.damen.com

FAST FERRIES

PRINCIPAL CHARACTERISTICS

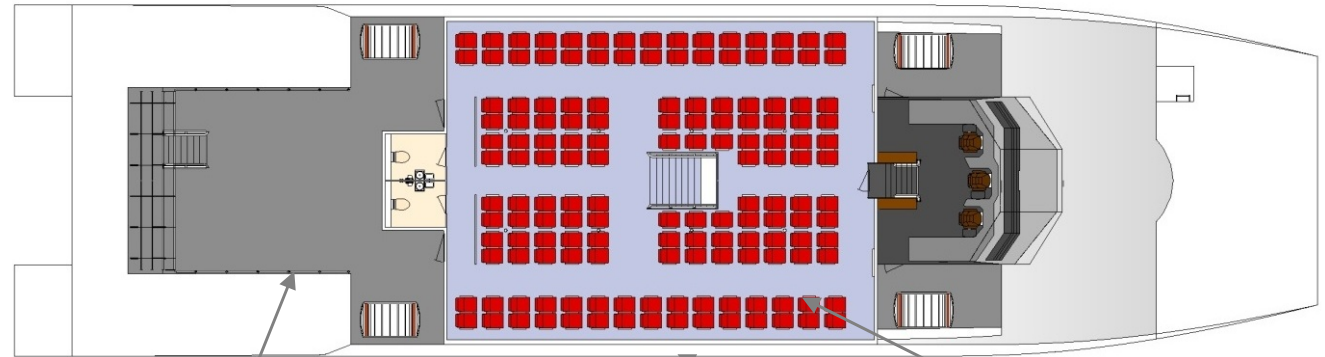
- Length o.a. 42.20 m
- Beam 11.60 m
- Depth 3.80 m
- Draught 1.50 m
- Max speed 40 kn at 26 tonnes deadweight
- Endurance 270 nm
- Aluminium hull and superstructure
- Bureau Veritas Classification
- Full 2000 HSC Code
- Engines: 4x MTU 16V2000 M72
- Total power: 5760 bkW (7720 bph) at 2250 rpm
- Gearboxes: 4x Reintjes WLS 730
- Waterjets: 4x Kamewa A56
- Generator: 2x Caterpillar C4.4, 2x 86 KWe



FAST FERRIES

PRINCIPAL CHARACTERISTICS

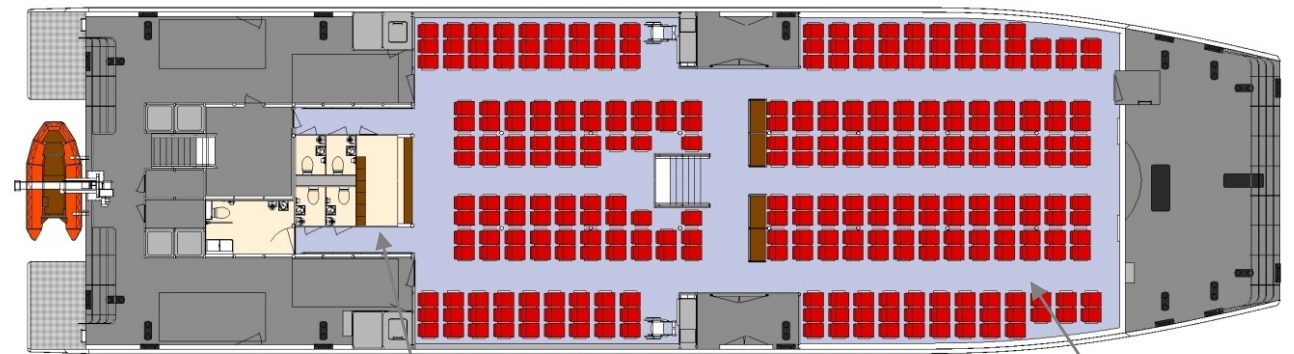
- **Passengers**
 - Main deck 298
 - Upper deck 150
 - Total 448
- **Luggage** 5 kg per passenger
- **Bar / kiosk** 1 kiosk on main deck
- **Toilets** 6 + 1 handicapped
- **Crew** 5
- **HVAC** Air-conditioning with temperature control
- **Variations in layout are possible**



Outside facilities to enjoy the sea breeze and give a true sailing experience

Excellent view through tinted glass windows

Possibilities to have a first class / VIP lounge



Hatches for easy removal of the main engines

Kiosk for additional revenue

Easy boarding via a spacious access to the lower lounge

Spacious saloon

FAST FERRIES

FEATURES

Interior design tailor made for local conditions and requirements.

Comfortable seats of modern design (Modell Mobler)

Life jacket in box under seat.

40" TV screens and DVD player for onboard entertainment.

Luggage storage close to exits.

Stainless steel apertures for sanitary spaces.

Air-conditioning system from leading manufacturer, designed for local summer and winter conditions.

Air curtains at entrance doors.



FAST FERRIES



FAST FERRIES

FEATURES

Kiosk for hot and cold servings.
Entertainment controls in kiosk.
Stainless steel railings, pillars and handgrips.



FAST FERRIES

FEATURES

Modern ergonomically designed wheelhouse console.

HSC 2000 cat A. electronic equipment.

GMDSS A2 Nav Com equipment.

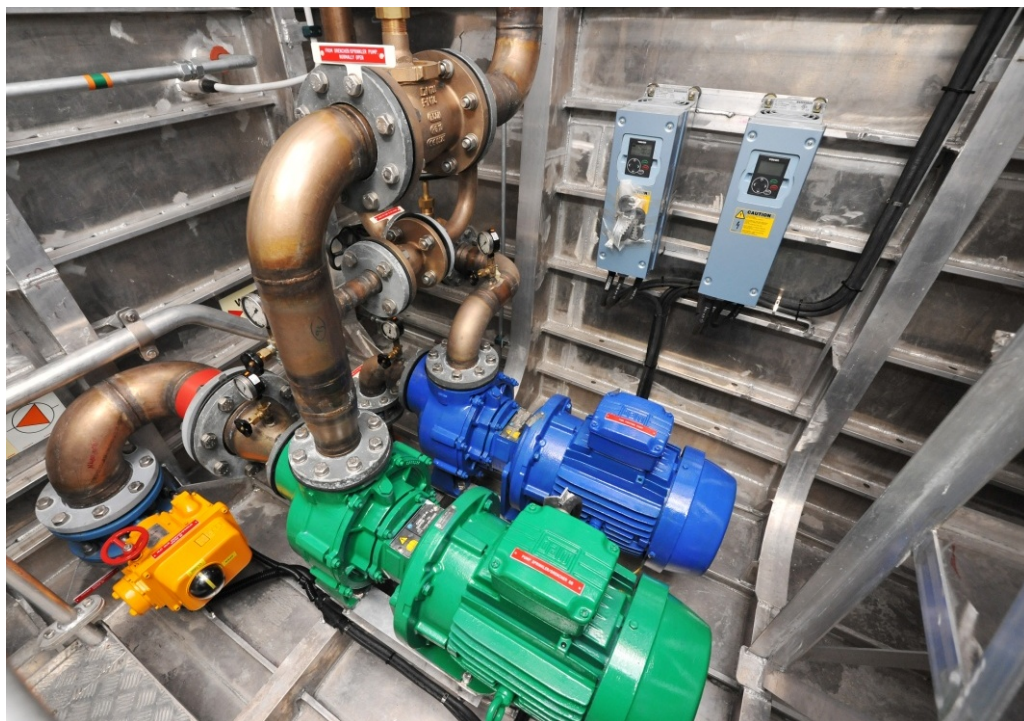
Three seats for helmsman (centre line); captain (SB) and engineer (PS).

Sun roller screens.

Wing control stations at both SB and PS.



Spacious “unmanned” engine room.
Efficient lay out of the pump room.
MTU main engines with high power
and excellent efficiency.
Low noise and vibration levels.



FAST FERRIES



CUSTOMIZATION FEATURES

- Interior colours & livery
- Seat trim and arrangement (eg. leather / recline / video)
- Entertainment system (video/audio)
- Floor coverings (eg. 'timber' look / logo's)
- External seating
- Boarding gangways (electrically operated)
- Upper deck kiosk
- Overhead luggage stowage in aluminium racks
- DAMOS Planned maintenance system
- Spare parts
- Destination indicators
- On-board ticketing

FAST FERRIES

REFERENCES

<u>Yard number</u>	<u>Ship name</u>	<u>Owner</u>	<u>Country</u>	<u>Delivery</u>
--------------------	------------------	--------------	----------------	-----------------



YN 538726

'Wan Sendari'

Bintan Resort Ferries

Singapore

2009

YN 538727

'Wan Seri Beni'

Bintan Resort Ferries

Singapore

2009



YN 538728

'Seastar'

Seaspovill

South Korea

2011



YN 538729

'Seastar 5'

Seaspovill

South Korea

2015



YN 538730

'Sunrise'

Deazer

South Korea

2015



YN 538731

'Sea Flower'

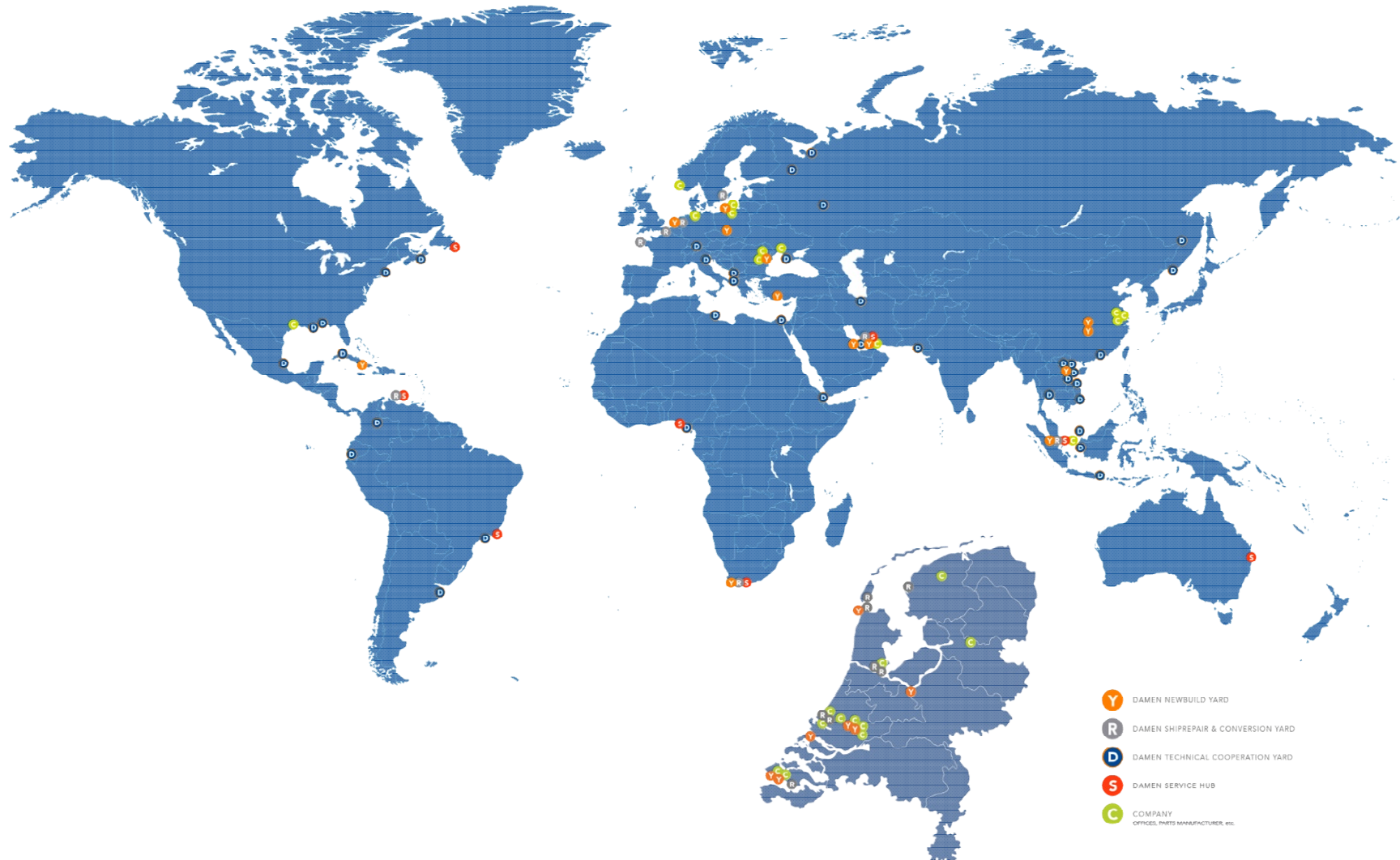
Daea Express Shipping

South Korea

2016

FAST FERRIES

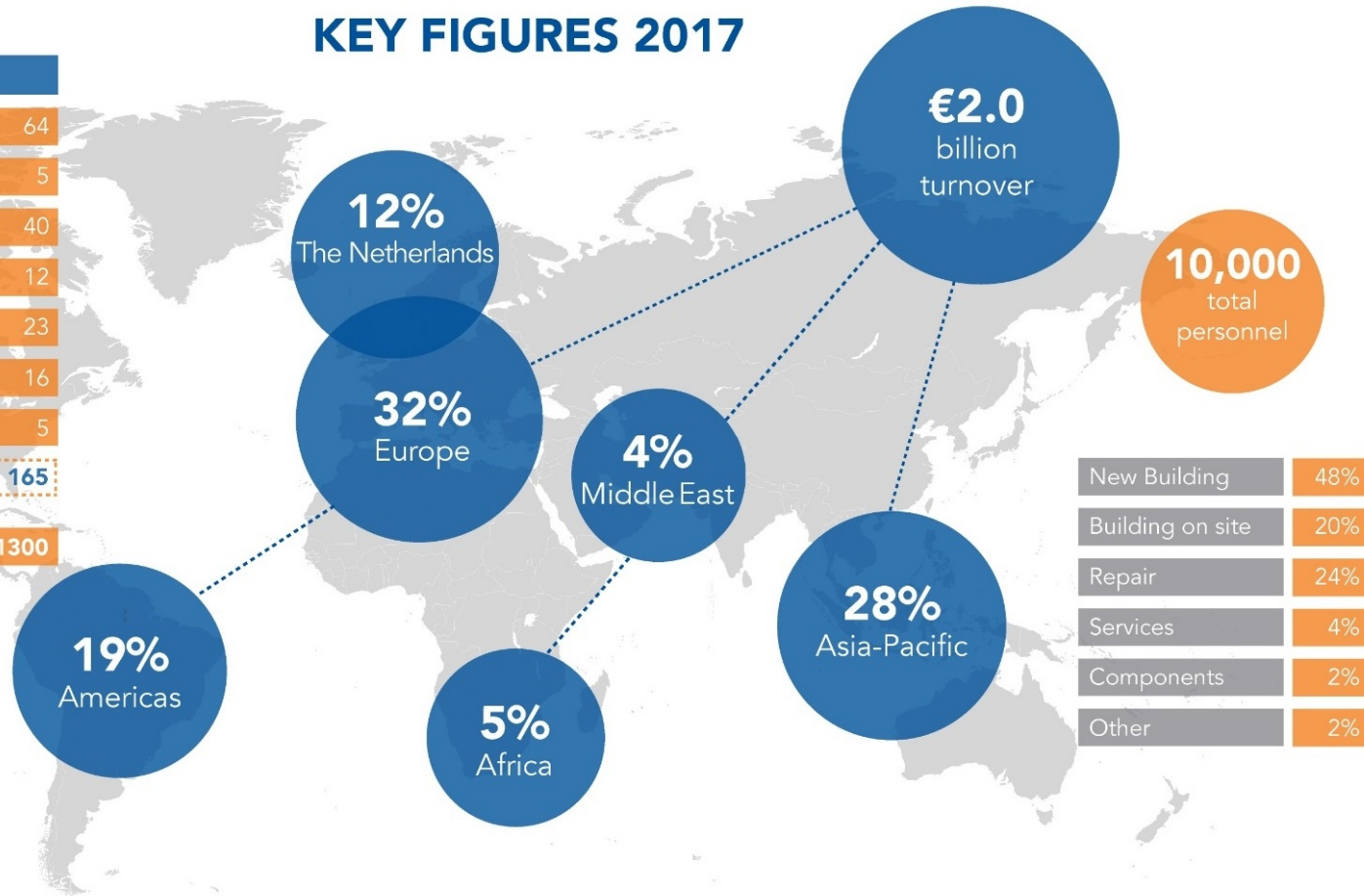
DAMEN SHIPYARDS

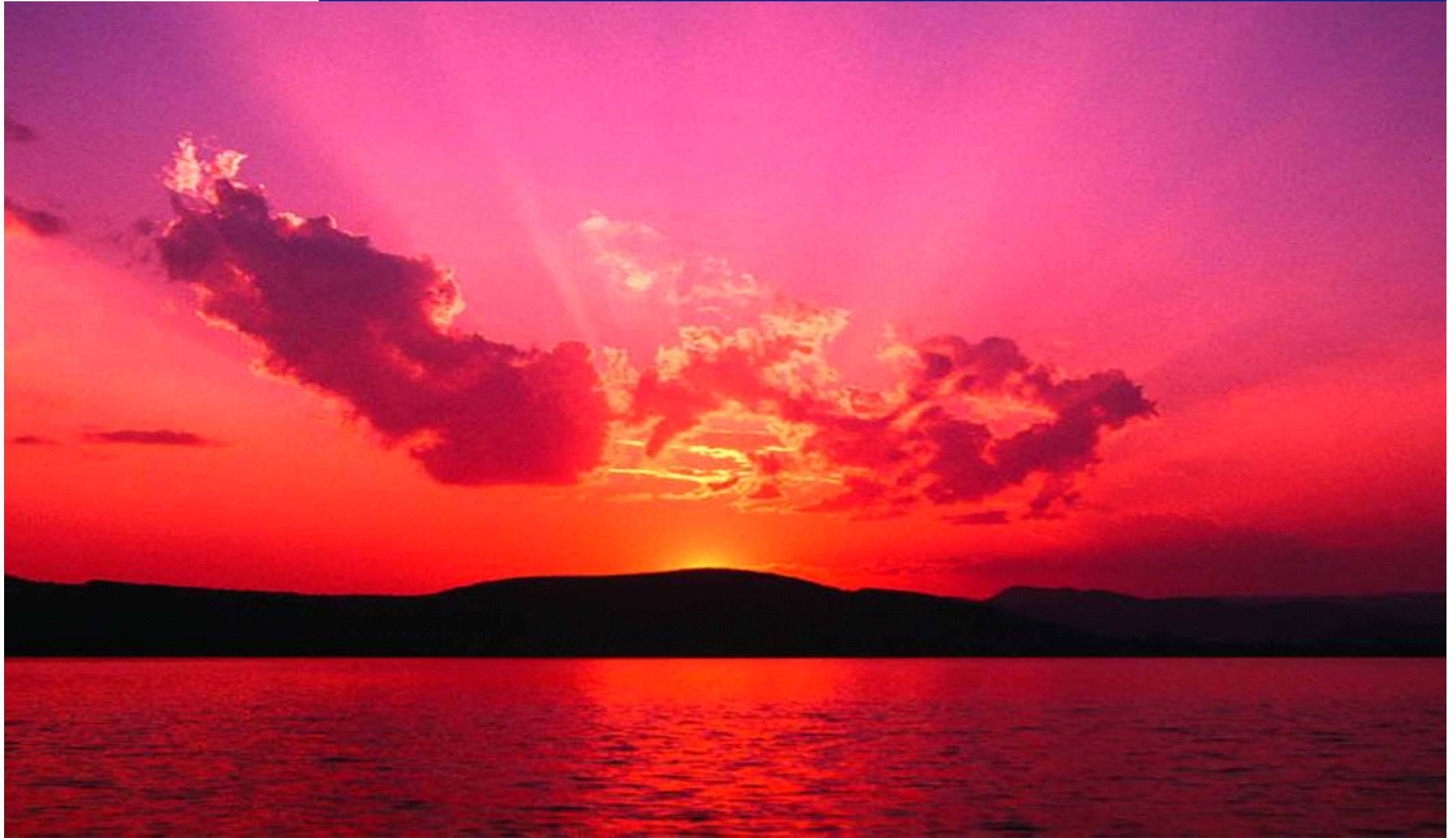


KEY FIGURES 2017

DELIVERED SHIPS 2017

Workboats & Tugs	64
Offshore vessels	5
High Speed Craft / Ferries	40
Pontoons & Barges	12
Dredging & Specials	23
Defence & Security	16
Yachts	5
Total	165
Repair & Maintenance jobs	1300





CONTACT DETAILS:
Damen Shipyards Gorinchem
PO Box 1
4200 AA Gorinchem
The Netherlands

Welcome on board

Phone
Fax
E-mail
Website

+31 (0) 183 63 99 11
+31 (0) 183 63 95 05
ferries@damen.com
www.damen.com