

Well maintained, heavily constructed. Can be adapted for dredging support, grab dredging, port construction or maintenance, salvage, diving support, pile driving, buoy-handling etc.

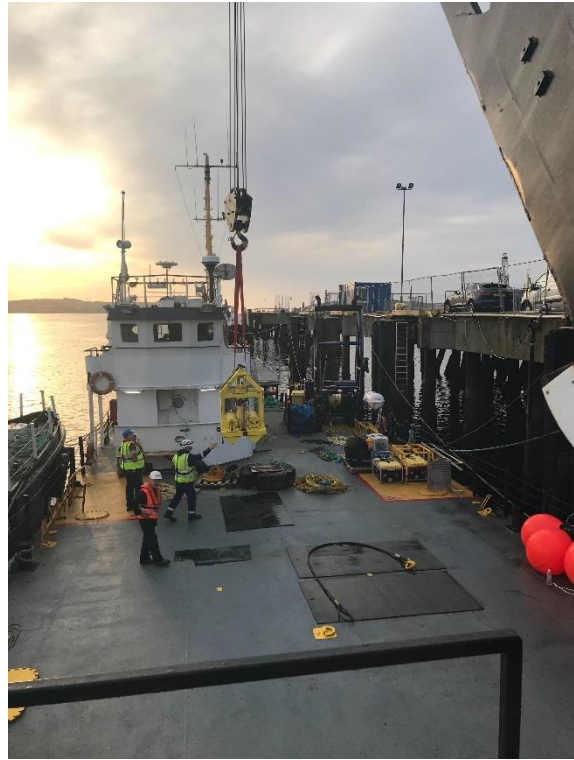
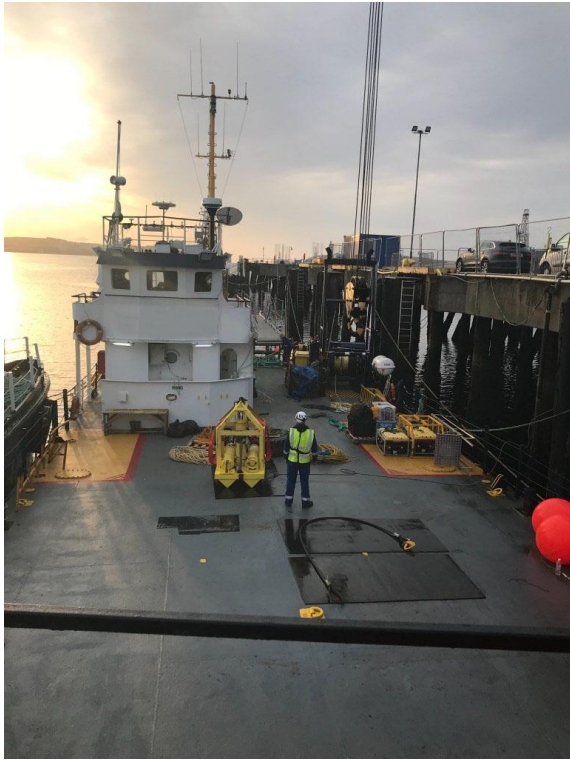
Type	Self-propelled crane/maintenance barge
Built	1972, re-conditioned 2015
Dimensions	32.40 x 10.36 x 2.80 mtrs
Draft	1.80 mtr
Propulsion	Twin screw
Main engines	2x Hyundai Seasall, type H380-D6HA (newly installed 2015)
Output	758 hp total at 1800 rpm
Gearboxes	D-I Reverse Reduction Gearbox, type KGDMT200 (newly installed 2015)
Speed	±8 knots
Tonnage	GRT 256 / NRT 76
Deadweight	350 tons
Deck equipment	4 point mooring, 4x 220 mtrs wire 4x 900 kgs anchors Deck winch 11 mtons 2x Push fender
Deck crane	FMC-link-Belt pedestal crane, type TC218, fully revolving, capacity: Fixed 36.6 tons at 6.10 mtrs 7.3 tons at 24.40 mtrs Revolving 18.7 tons at 6.10 mtrs 4.7 tons at 24.40 mtrs
Free deck area	225 m ² of which 160 m ² covered with wood
Deck load	280 tons total
Cargo hold	184 m ³
Main generator	Sole diesel, type 85GT, 85 kVA (newly installed 2015)
Alternator	MeccAlte, type ECP34-1S4
Deck generator	ARC-GEN, type Power maker 15MV-K (manufactured 2008)
Tank capacities	Fuel oil 67,0 m ³ Fresh water 18,8 m ³ Ballast 229,0 m ³
Accommodation	Galley, mess-room, 10 air-conditioned/ heated berths
Nav./comm. equipment	Compass, radar, autopilot, 2x VHF, SSB, GPS, gyro compass, echo-sounder
Class	National certificates only.
Remark	Well maintained, heavily constructed. Can be adapted for dredging support, grab dredging, port construction or maintenance, salvage, diving support, pile driving, buoy-handling etc. Vessel has been completely re-fitted in 2015, including engines, generator, new accommodation and refurbishment of crane













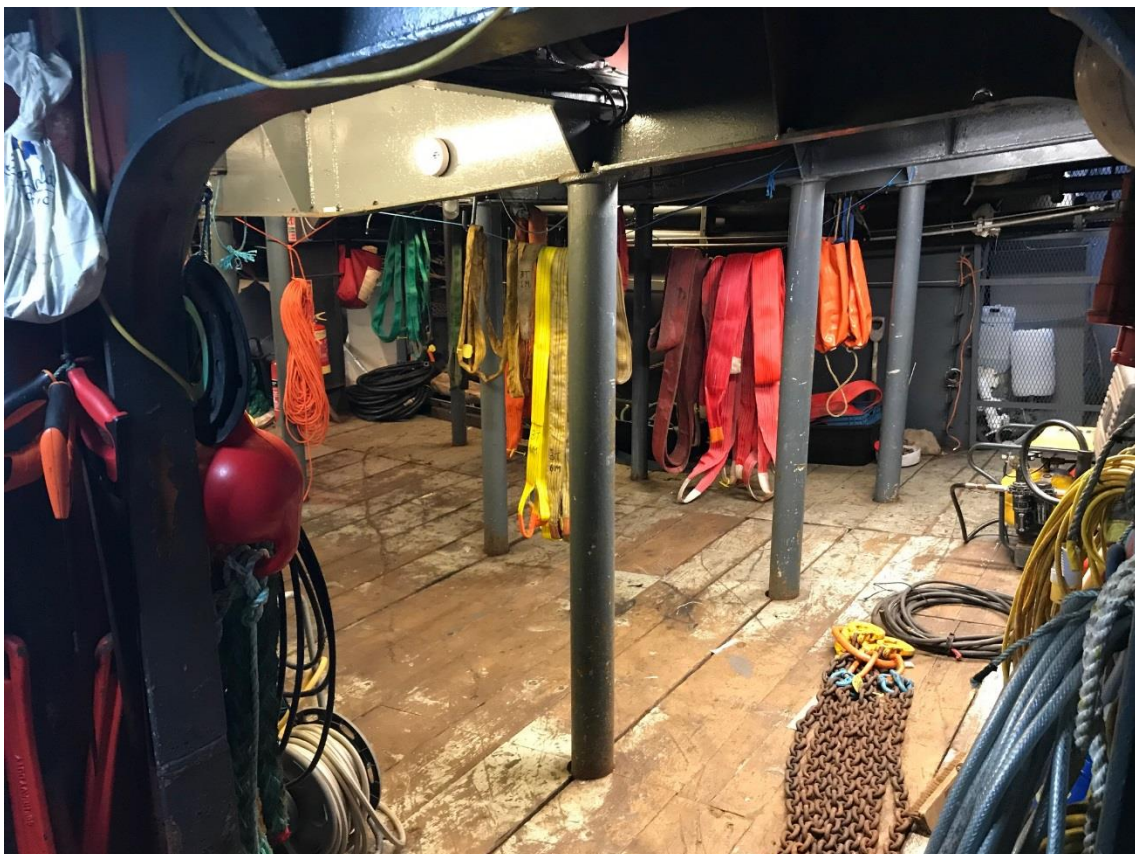






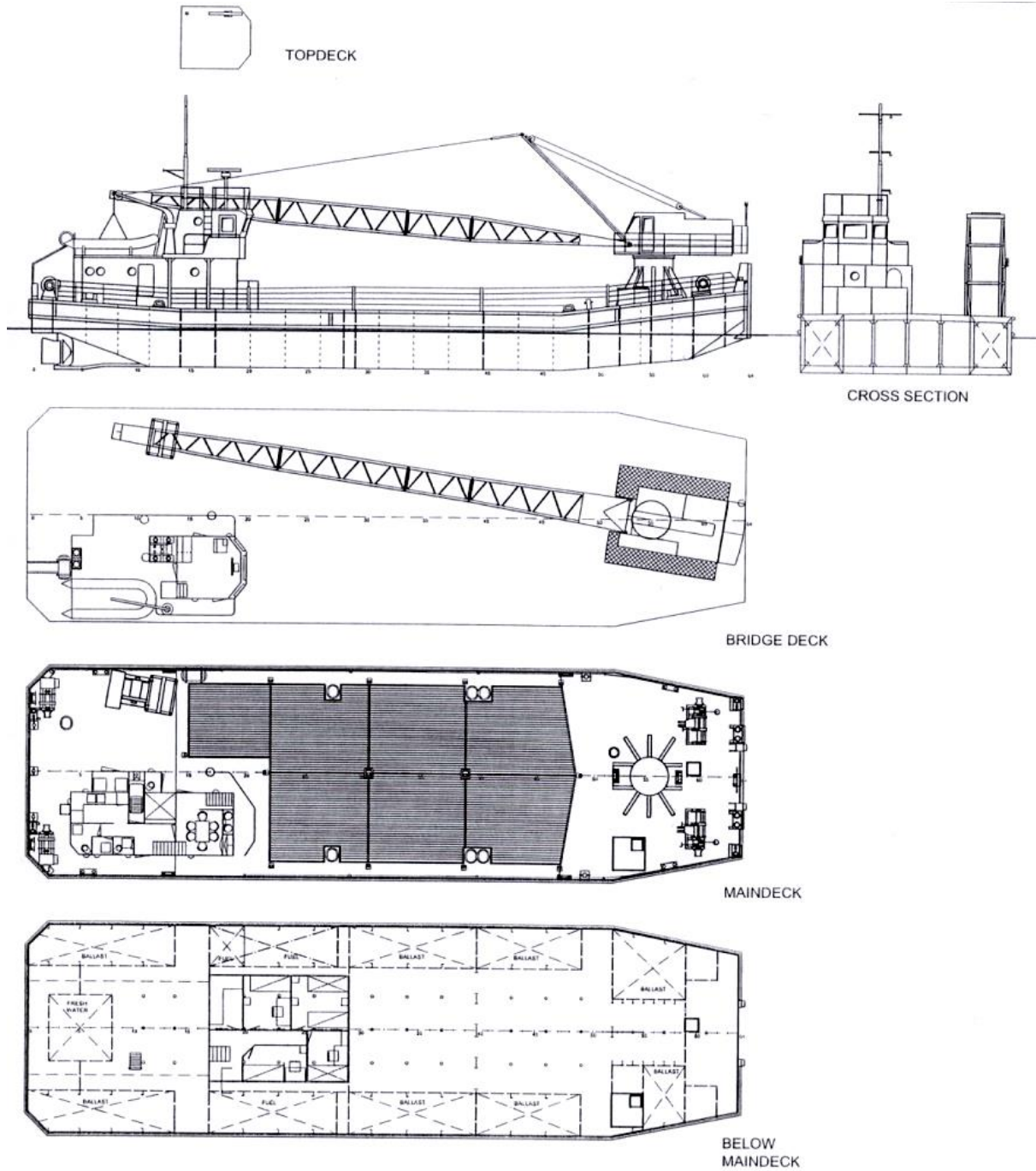




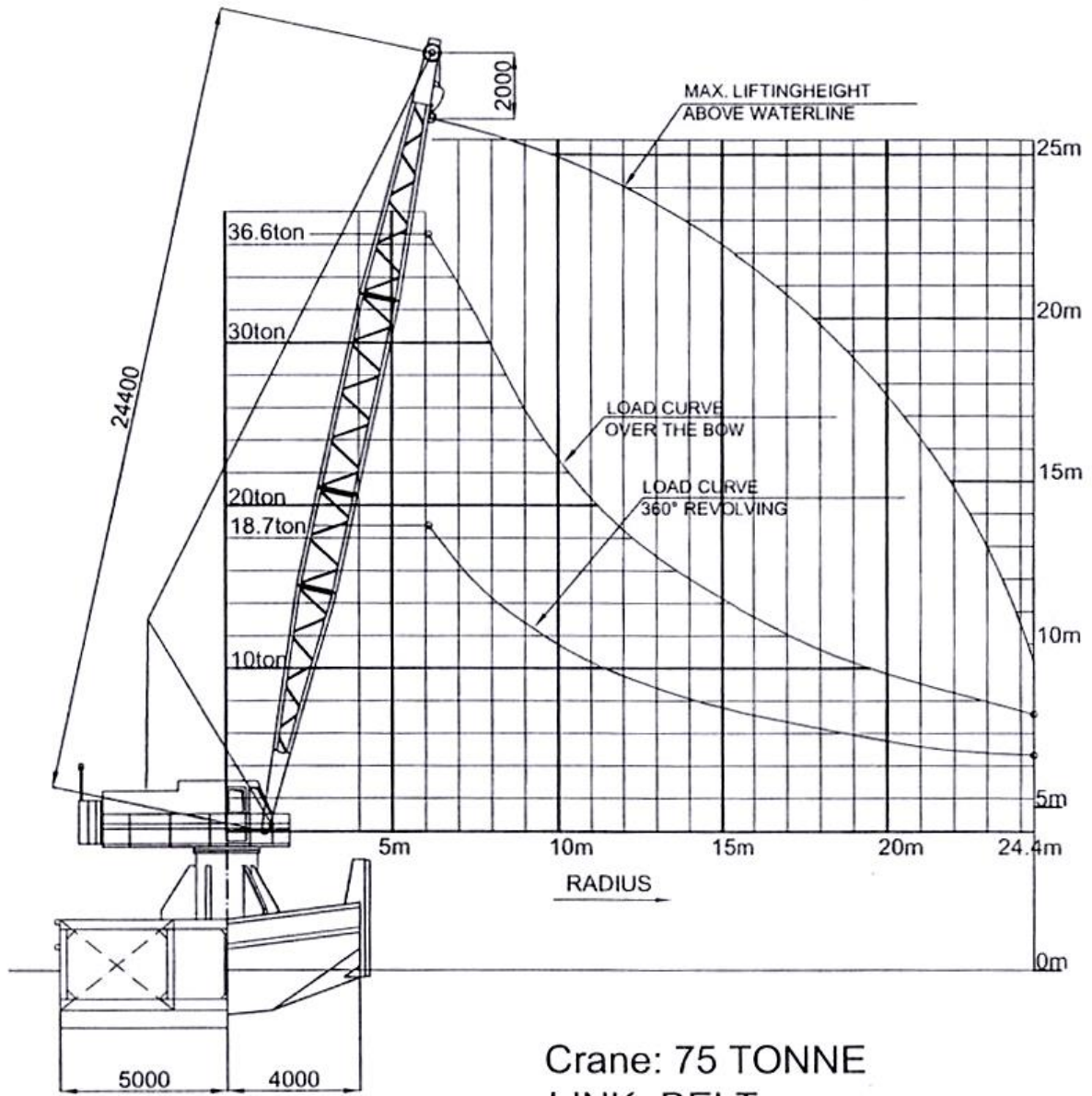




SELF-PROPELLED CRANE/MAINTENANCE BARGE



SELF-PROPELLED CRANE/MAINTENANCE BARGE



Crane: 75 TONNE
LINK- BELT
TYPE TC 218