

# Modular multi cat 2210

Telesto



## ▶ PICTURE OF SIMILAR VESSEL

### GENERAL

Yard number	523043
Basic functions	The Damen Modular Multi Cat (MMuC) 2210 is a multipurpose vessel for coastal, sheltered/inland water services, built in steel derived from standard design
Description	The entire hull of the Vessel consists of modules, some of these as container sized units. These modules are called Damen Modular Barges and can be coupled together with a class approved coupling system, the Damen Link. Because of this modular system, the entire Vessel can be transported by ship, truck or train to her final place of destination and assembled locally.
Classification	Bureau Veritas/St. Vincent flag Class I • Hull • Mach, Special Service / Workboat / Caspian Sea / Coastal area outside Caspian Sea / AUT-UMS

### DIMENSIONS

Length o.a.	22.50 m
Length pontoon	20.70 m
Beam o.a.	10.10 m
Depth at sides	1.80 m
Draught (empty)	0.85 m
Draught (shallow operation)	1.00 m

### CAPACITIES

Fuel	8.70 m <sup>3</sup>
Fresh water	1.00 m <sup>3</sup>
Sewage	2.00 m <sup>3</sup>
Max. deck load	6.80 t/m <sup>2</sup>
Cargo deck area (approx.)	46 m <sup>2</sup>
Max. cargo capacity	20 t

### PERFORMANCES

Speed (deep water)	7 kn
Speed (shallow operation)	3 kn
Bollard pull (deep water)	6 t
Bollard pull (shallow operation)	3 t

### PR PROPULSION AND STEERING SYSTEM

Propulsion type	2 x diesel driven deck mounted hydraulically driven rudder propeller
Main Engine	2x Volvo Penta D7CTA – 265hp
Total power	390bkW
Steering capability	2x 65°fore and aft

### PRIMARY SHIP SYSTEMS

Deckwash / fifi pump	2x (1 fixed/1 portable)
----------------------	-------------------------

### ELECTRICAL SYSTEM

Network	24 V / 230 V / 400 V
Main generator set	1 x 32 kVA

### DECK LAY-OUT

Heila Deck crane	1x HLRM 65-3S
Hydraulic main winch	1x 30 t
Anchor	2x 180 kg
Anchor winch	1x
Bollard (double)	4x

### LIFE SAVING EQUIPMENT

Life buoy	2x
Life jacket	4x
Fire extinguisher	7x
First-aid kit	1x
Life rafts (6 pax)	2x

### SUPERSTRUCTURE

Accommodation as per mlc2006	2 pax
Toilet	1x
Shower	1x
Wheelhouse	Efficient layout, unobstructed view in all directions, good overview vessel.
Fan coil air-conditioning unit with heating unit inside	4x

### NAUTICAL AND COMMUNICATION EQUIPMENT

Navigation lights	All necessary navigations lights are installed.
GMDSS A2 unit	1x
Search light	1x
Horn	1x
Radar	1x
GPS	1x
Compass	1x
Echosounder	1x
Barometer	1x
Thermometer	1x

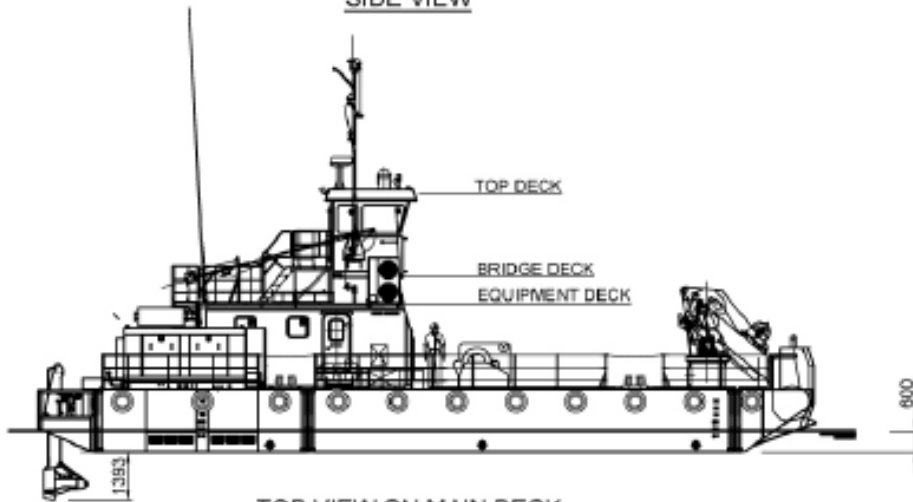
Ø = Optional equipment

# Modular multi cat 2210

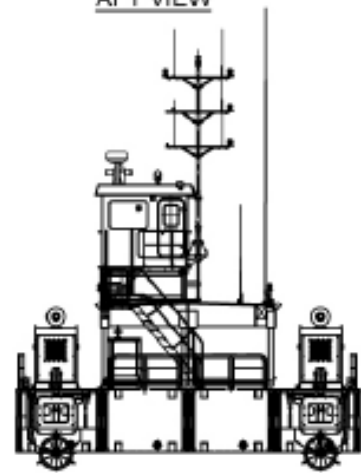
Telesto



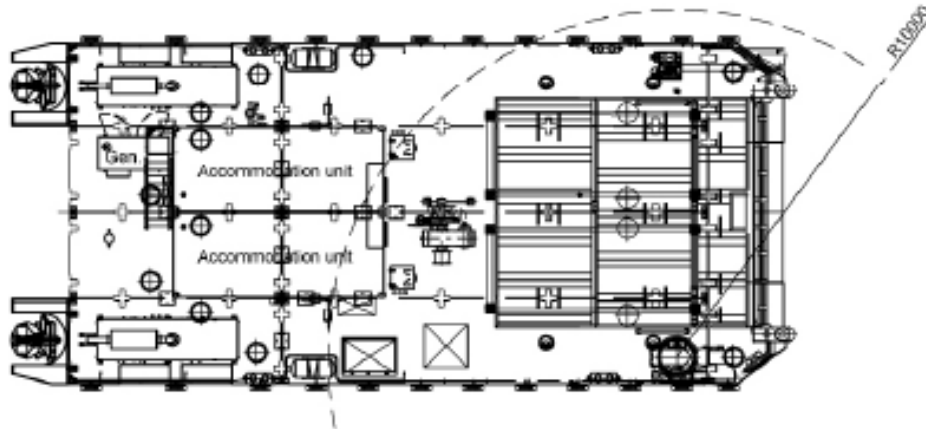
SIDE VIEW



AFT VIEW



TOP VIEW ON MAIN DECK



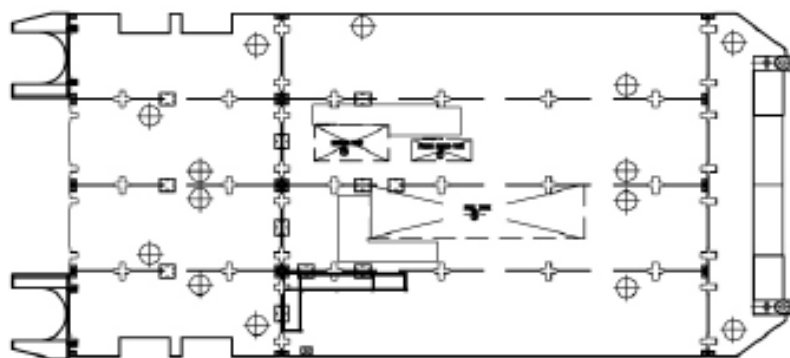
ACCOMMODATION



EQUIPMENT DECK



TOP VIEW BELOW MAINDECK



BRIDGE DECK



TOP DECK

