



# The tug *A'rinra* was launched at Gulf Ship

The 14th of June has become a great day for the Edison Chouest company, who launched a massive offshore tugboat off the Gulfport shipyard (Texas) on. The vessel took around 9 months to build. It's around 157 feet long and 50 feet wide. According to the yard manager, Chris Bond, more than 200 employees were working on it.

"It's a proud day for Harrison County. It's a celebration of all the hard work and energy and all the great workforce. This vessel is headed to another part of the world and the oil industry, and we are very proud of that," said Bill Levers, the Harrison County Executive Development Director.

MDEM also has reason to be proud, whose engineers participated in the tugboat project. Stanislav Seleznov, Head of Engineering Services Department MDEM, shared with details of this project.

## ➤ The main features of the yacht are:

Project Name	Damen Azimuth Stern Drive® Tug 5016 Hybrid
Project No.	ASD 5016
Class notation	ABS X1A, XAMS, ACCU, Towing Vessel, UWILD, BP (125 t), QR, FFV 1, XDPS-2

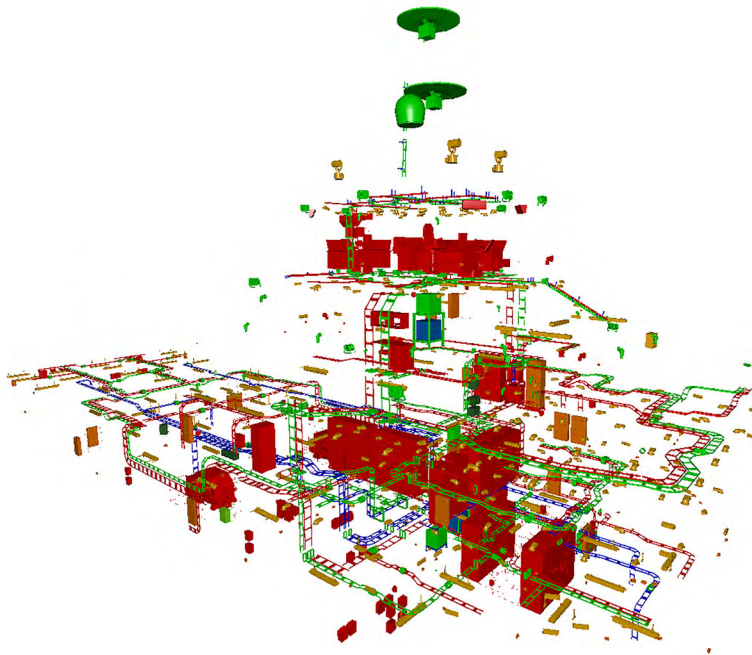
## ➤ Principal dimensions:

Length overall (incl. appendages)	50.10 m
Beam overall (incl. appendages)	16.19 m
Depth at side (at half length)	6.35 m
Light ship weight	1515 t
Max. operational draught	6.35 m

## ➤ The following data is valid in 98% loading condition, excl. recovered oil/slop oil and no deck load:

Deadweight	520 t
Displacement (in fresh water)	2035 t
Draught (in fresh water)	6.45 m

"MDEM was involved this project with Damen Expertise Center engineers and provided basic and mechanical engineering for mechanical and electrical disciplines in period september 2020 – april 2021. Due to close cooperation with Client representatives from Edison Chouest Offshore Companies we managed to be in line within the tough schedule. That was a great experience and the biggest vessel for the Basic Design services provided by our company.



One more specific feature of the project is simultaneous workflow of Basic Design and Detailed Engineering processes together with Client supervision and Class approval. Another challenge for our company was using the same team for Basic and Detailed Engineering that required additional efforts from our engineers adjusting their skills to different phases of the project and managing multiple tasks and switching from one task to another at the shortest time.

Talking about challenged of the project I'd like to remind the time difference between our European offices and Louisiana shipyard that is 10 hours. All the meetings and approval sessions has been held early in the morning for our engineers and late in the evening for American Client. Moreover, everyone knows about the American Standards which we also have to keep in mind during our engineering activities.

Anyhow that was an intensive and interesting project and it was an honor for MDEM to contribute as Basic Engineering partner and provide high quality Detailed Engineering to the American Client. So we are looking forward next project and continuation of Damen expansion to the American market." ■