

Azimuth Stern Drive Tug 2312

STOCK



PICTURE OF SIMILAR VESSEL

GENERAL

Basic functions	Towing, mooring, Ø oil pollution control and Ø fire-fighting operations
Classification	Bureau Veritas I ✳ HULL • MACH Tug (Bollard pull = 70 t) Unrestricted Navigation AUT UMS Inwater Survey COMF-NOISE 3, COMF-VIB 3
Ø Classification	Bureau Veritas I ✳ HULL • MACH Escort Tug (Bollard pull = 70 t) (maximum steering force = 55 t, maximum braking force = 60 t, maximum escort speed = 10 kn) Unrestricted Navigation AUT UMS Inwater Survey COMF-NOISE 3, COMF-VIB 3 Ø Fire Fighting Ship 1 Ø Fire Fighting Ship 1 with water spray Ø Clean ship Ø Green Passport EU Epoxy paint system
Painting	

DIMENSIONS

Length overall	22.81 m
Beam overall	12.03 m
Depth at sides	4.40 m
Draught aft	5.60 m
Displacement (98% consumables)	491 t
Scantlings	Hull 10 mm, sheerstrake 15 mm

TANK CAPACITIES

Fuel oil (incl. long range tanks)	80.3 m ³
Fuel oil	51.8 m ³
Fresh water	8.0 m ³
Sewage	5.1 m ³
Dirty oil	1.5 m ³
Lubrication oil	1.5 m ³
Bilge water	3.0 m ³
Ø Foam	6.1 m ³
Ø Dispersant	3.0 m ³
Ø Urea	2.5 m ³

PERFORMANCES

Bollard pull ahead	70.0 t
Bollard pull astern	65.0 t
Speed	12.4 kn

PROPULSION SYSTEM

Main engines	2x Caterpillar 3512C TA HD/D
Total power	3804 bkW (5102 bhp) at 1800 rpm
Azimuth thrusters	Kongsberg Maritime US 205S FP
Clutches (on-off type)	Kongsberg Maritime 'built in' type or equal
Propeller diameter	2800 mm
Forced ventilation	60.750 m ³ /h
IMO Tier III	Vessel is prepared for installation of an optionally available Class approved Selective Catalytic Reduction system

AUXILIARY EQUIPMENT

Generator sets	2x shaft generator, 62.5 kVA each, 400 V, 50 Hz
Ø Generator sets	2x shaft generator, 62.5 kVA each, 440 V, 60 Hz
Harbour generator set	Caterpillar C4.4, 64.5 kVA, 400 V, 50 Hz
Ø Harbour generator set	Caterpillar C4.4, 73.0 kVA, 440 V, 60 Hz
Bilge pump	Azcue CA-32/05 up to 10 m ³ /h
General service pumps	2x Azcue CA-50/3A up to 27 m ³ /h
Fuel oil pump	Azcue MR-41/10 up to 12.0 m ³ /h
Fuel oil filters	2x Coalester filters incl. water separator
Fuel oil purifiers	2x CJC PTU3 27/81 MZ-E2PWZ, 1920 l/h each
Fresh water pressure set	DAB Euroinox 40/50T, 70 l/min, up to 3.0 bar
Sewage pump	Distrimex B40
Ø Sewage treatment plant	Selmar Blue Sea Plus 2500
Lubrication pump(s)	Azcue, BT-HM-32D4 up to 2.4 m ³ /h
Cooling system	Box cooling and keel cooling + anti-growth system
Hydraulic system	Double main engine driven pumps
Ø Oil pollution control	Dispersant pumpset with 2 spraybooms
Ø Fifi set	Main engine driven pump 1200 m ³ /h or 2400 m ³ /h
Ø Fifi monitor	1x 1200 m ³ /h or 2x 1200 m ³ /h water/foam

DECK LAY-OUT

Anchor(s)	1x 360 kg Pool + Ø 1x 360 kg Pool (High Holding Power)
Anchor winch	10 m/min
Towing winch	Hydraulically driven double drum, pull 35t up to 10 m/min and speed up to 40 m/min on second layer, 175 ton brake on 2 nd layer
Ø Capstan	Electrically driven, 5 ton at 16 m/min or Ø 19 m/min
Ø Towing hook	Mampaey SWL 86 ton
Ø Crane	HS Marine AK 16 HE3, 0,8 t at 11.15 m or HS Marine AK 28/10.3 E3, 1.7 t at 10.30 m + winch 2000 kg.
Fendering	D-fender at sides, cylindrical fender at transom corners, cylindrical and W-block bow fender and Ø tyre fendering

ACCOMMODATION

For 6 persons (MLC 2006 compliant), completely insulated and finished with durable modern linings, acoustical ceiling in the wheelhouse and floating floors. Air-conditioned accommodation with four crew cabins and galley/mess at accommodation deck. Switchboard room and sanitary facilities at lower deck.

NAUTICAL AND COMMUNICATION EQUIPMENT

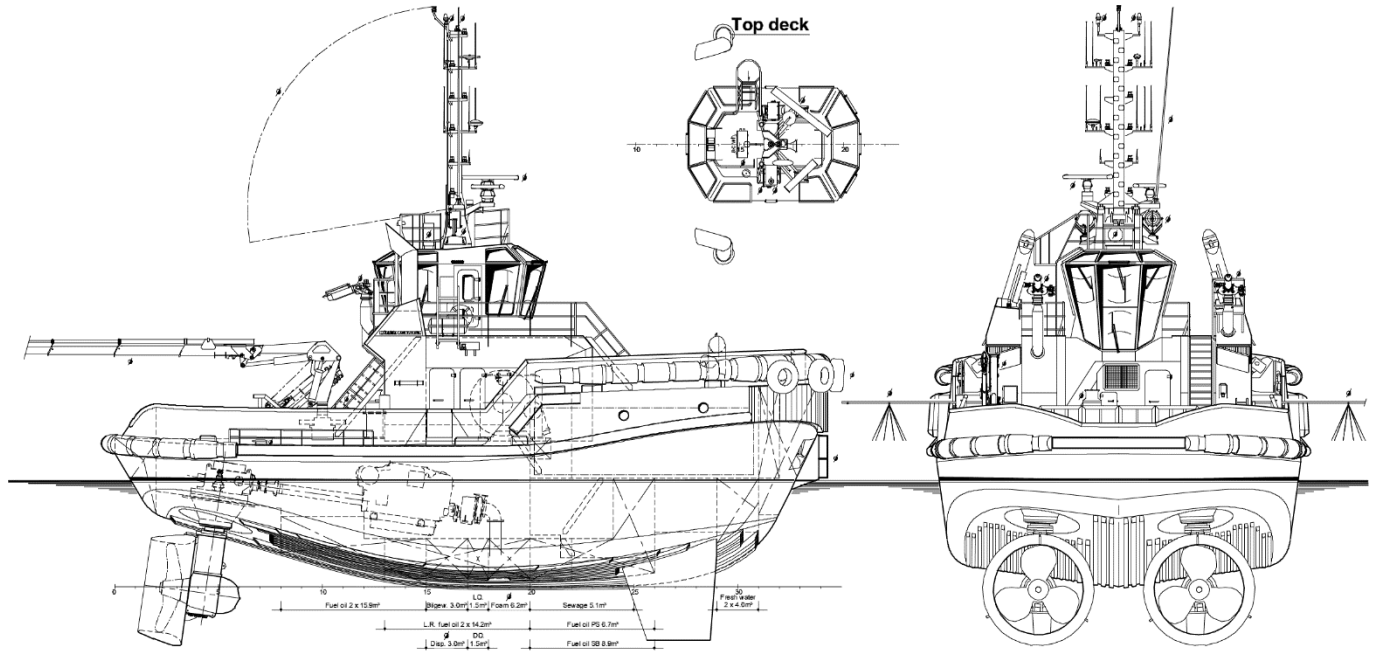
Searchlight	1x Norselicht SH470 2000 W + Ø 1x Norselicht SH470 2000 W
Radar system	1x Furuno FAR 1518-BB + Ø 1x Furuno FAR 1518-BB
ECS	MaxSea TZ Professional
Compass	Cassens & Plath Reflecta 11
Satellite compass/GPS	Simrad GN70/HS80A
Ø Gyro compass	Anschutz Standard 22 Compact
Autopilot	Simrad AP-70
Echosounder	FCV-628
VHF radio telephone	2x Cobham Sailor 7222, one with DSC + Ø 1x Cobham Sailor 6215
VHF portable (GMDSS)	2x Sailor SP3540
Navtex	Furuno NX-700B
Ø SSB	Cobham Sailor 6310
Ø Inmarsat + Ø spare	Furuno Felcom 18
Ø ECDIS	Furuno FMD-3200
AIS	Furuno FA-170
EPIRB	Jotron Tron60AIS
SART	Jotron Tron AIS
Remote monitoring	Ready for Damen Triton
Anemometer	Gill Instruments GMX 500

Ø = Optional equipment

Azimuth Stern Drive Tug 2312



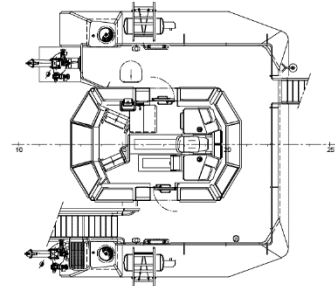
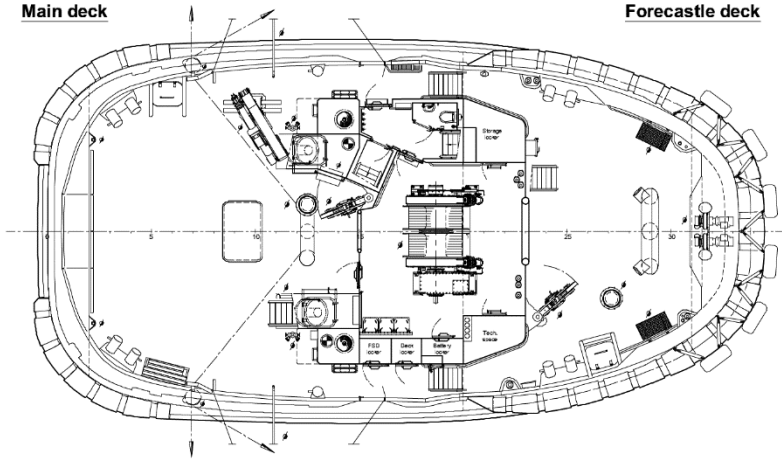
STOCK



Main deck

Forecastle deck

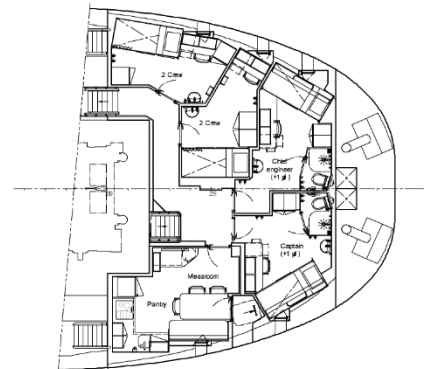
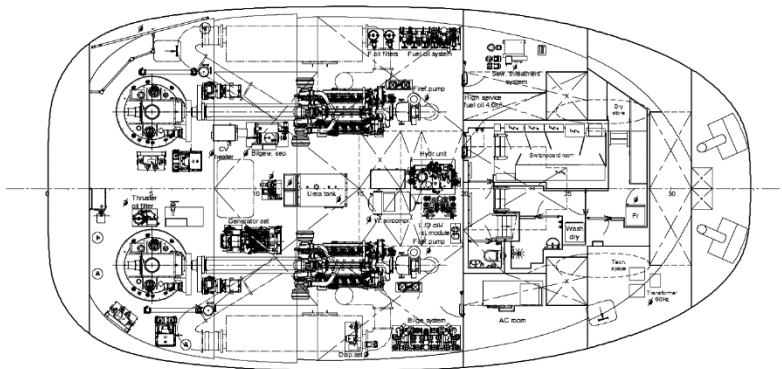
Bridge deck



Below Main deck

Lower deck

Accommodation deck



DAMEN

Damen.com



© No part of the leaflet may be reproduced in any form, by print, photoprint, microfilm, or any other means, without written permission from Damen Shipyards Group