

*This 22 meter Damen tugboat is a straight forward conventional tugboat, which has proven to be a strong workhorse and as you can see on the recent pictures, has been kept very well.*

Type	DAMEN Stan Tug 2207	
Built	2000, Damen Shipyards, the Netherlands	
Dimensions	22.50 / 20.42 x 7.25 x 3.75 mtrs	
Draft	2.95 mtrs aft	
Propulsion	Twin screw in nozzles	
Main engines	2x Caterpillar, type 3508B, DI-TA/B	
Output	2000 bhp total at 1600 rpm	
Gearboxes	2x Reintjes, type WAF 561L, ratio 5,947:1	
Speed	± 12 knots	
Bollard pull	± 28.4 tonnes	
Tonnage	GT 119.44 / NT 36.39	
Clear deck area	Aft of towing bitt ± 36 m <sup>2</sup>	
Deck equipment	Towing winch Kraaijeveld 10 tons pull, 50 tons hold (3 <sup>rd</sup> layer), wire capacity 300 mtrs with Diameter of 36 mm. Deck crane Heila HLM 17-4S, 900 kg at 12.99 mtrs Towing hook SWL 45 tons Bow fender Anchor winch 10 m/min.	
Aux. engines	2x Caterpillar, type 3304 NA/SR 4	
Output	63 kVA each, 50Hz, 220/380 V	
Bow thruster	Not fitted	
Tank capacities	Fuel oil	34.9 m <sup>3</sup>
	Fresh water	9.2 m <sup>3</sup>
	Sewage	1.1 m <sup>3</sup>
	Ballast	4.5 m <sup>3</sup>
Accommodation	Fully air-conditioned living space for 10 persons, 2x Single berth cabins, 2x double berth cabins, 1x 4 berth cabins, galley, mess room, 1x toilet and shower at main deck, 2x toilet and shower below main deck.	
Nav./comm. equipment	3x VHF, radar, magnetic compass, GPS, SSB, echo sounder	
Class	Bureau Veritas I <u>⊗</u> Hull <u>⊗</u> Mach Tug Coastal Area	

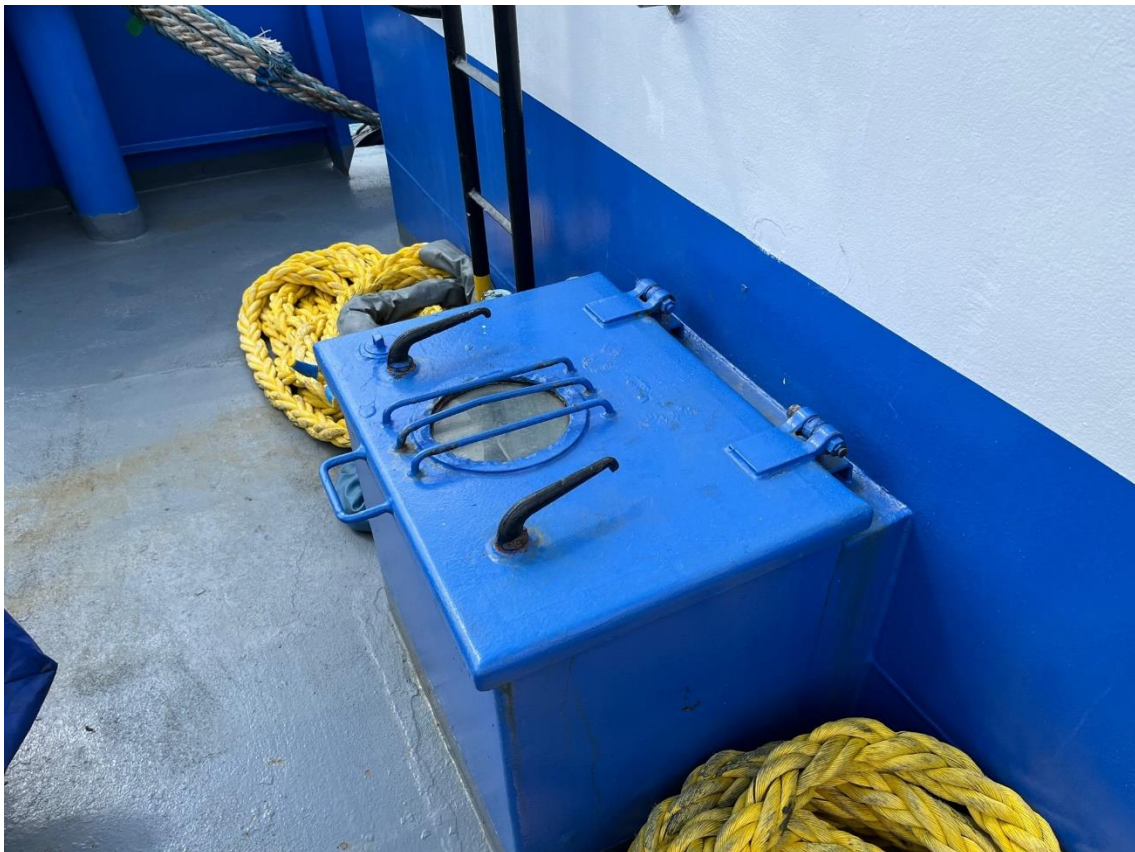




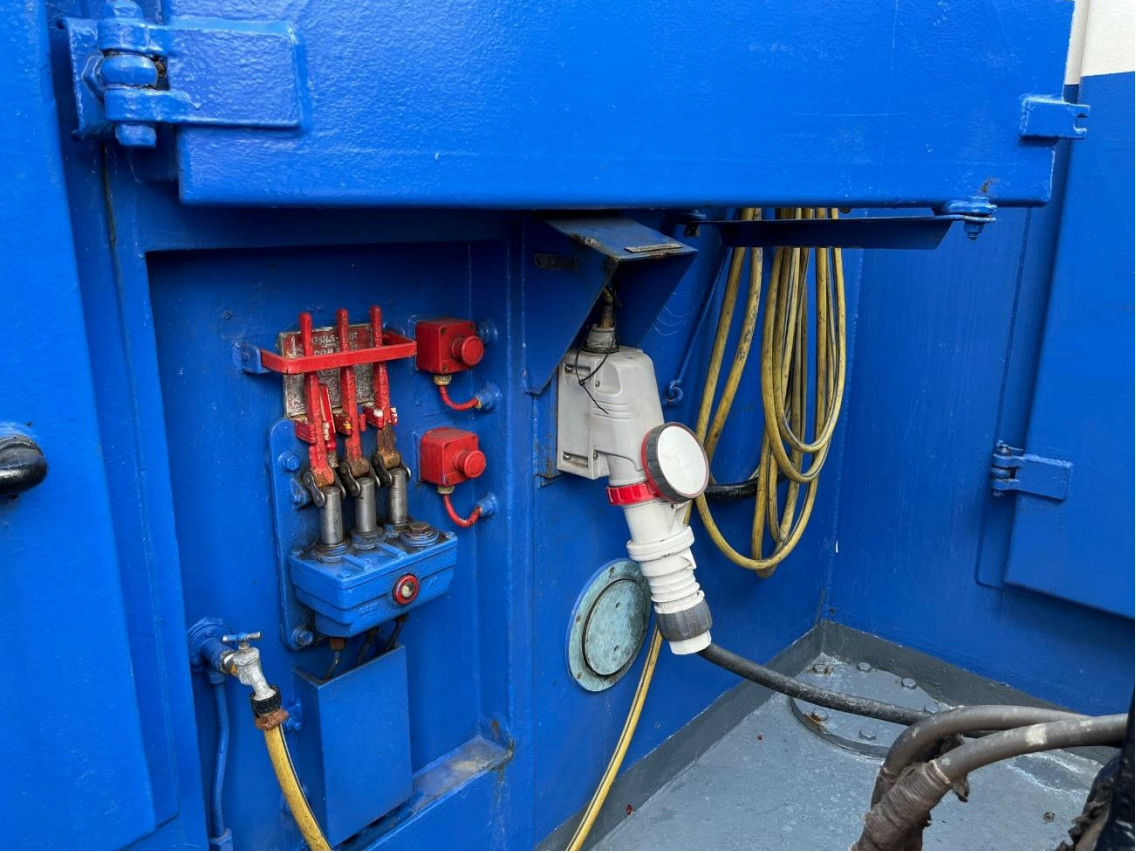










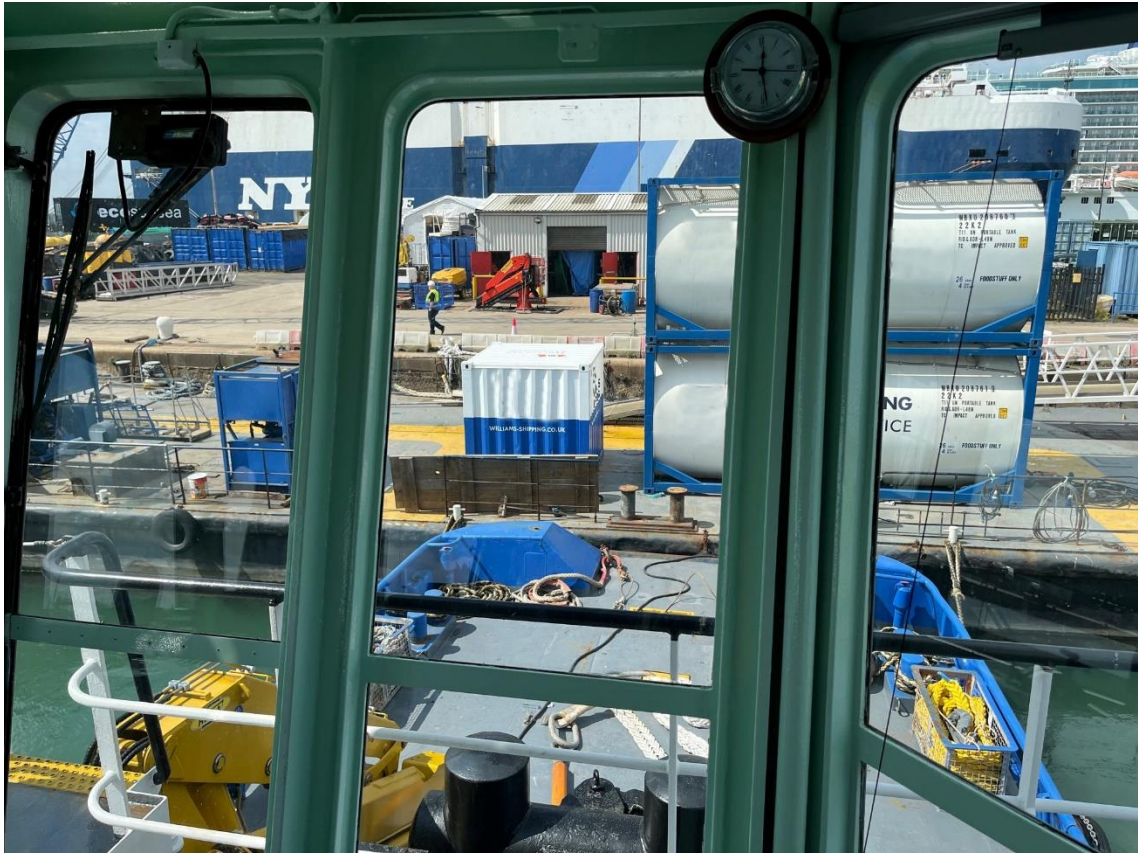




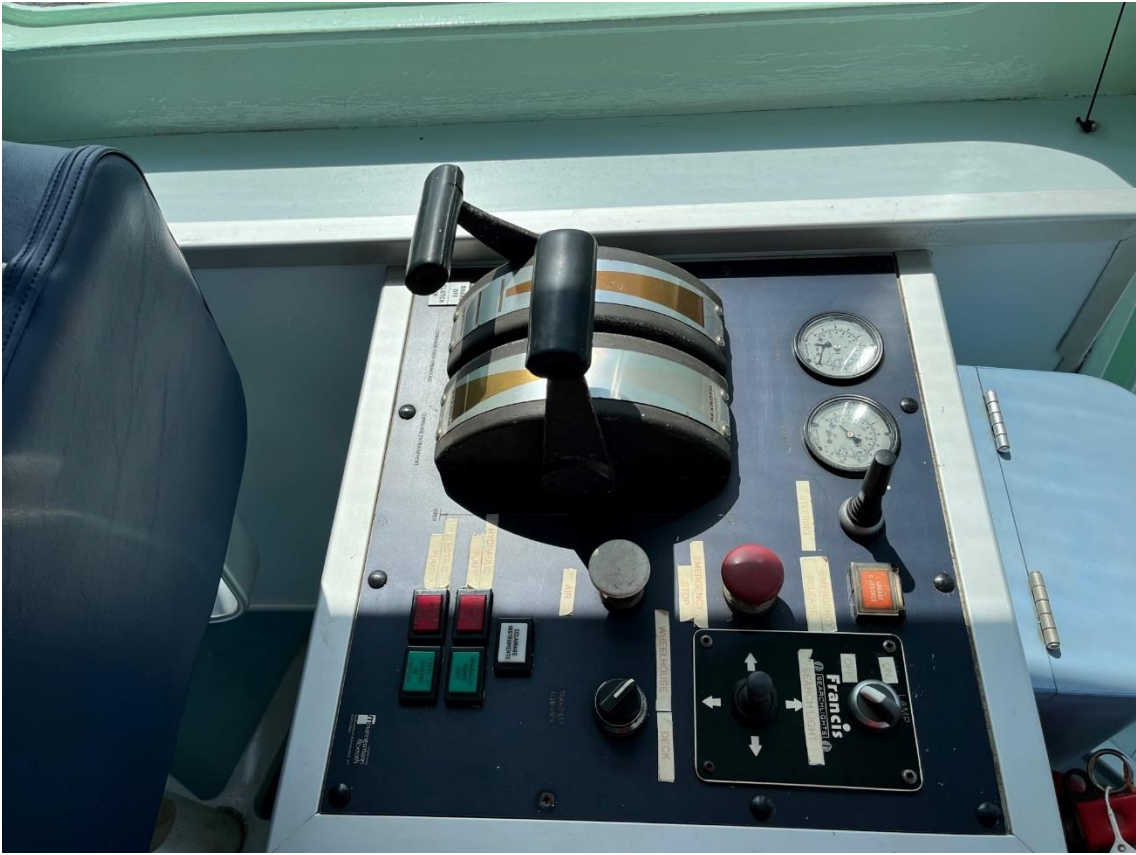












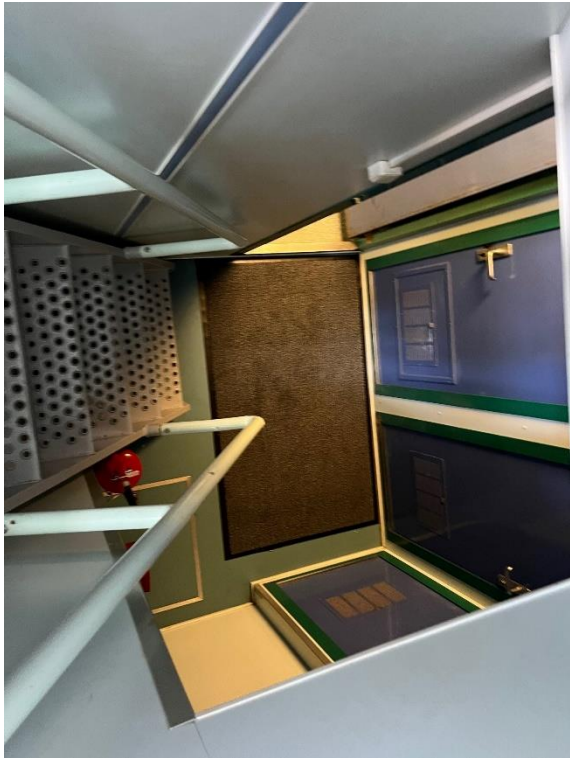






























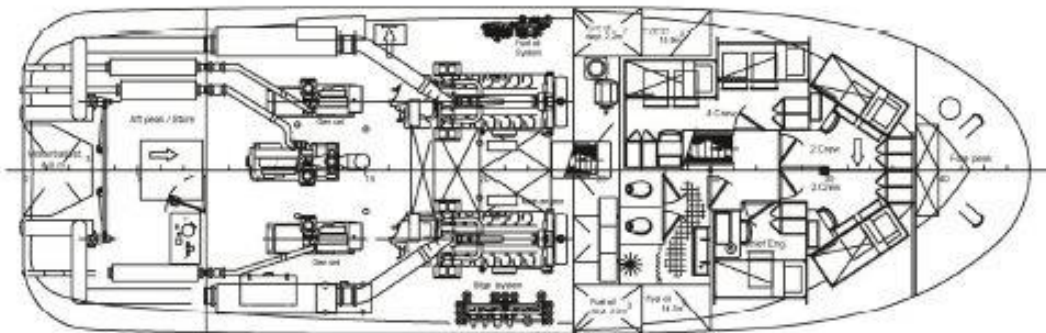
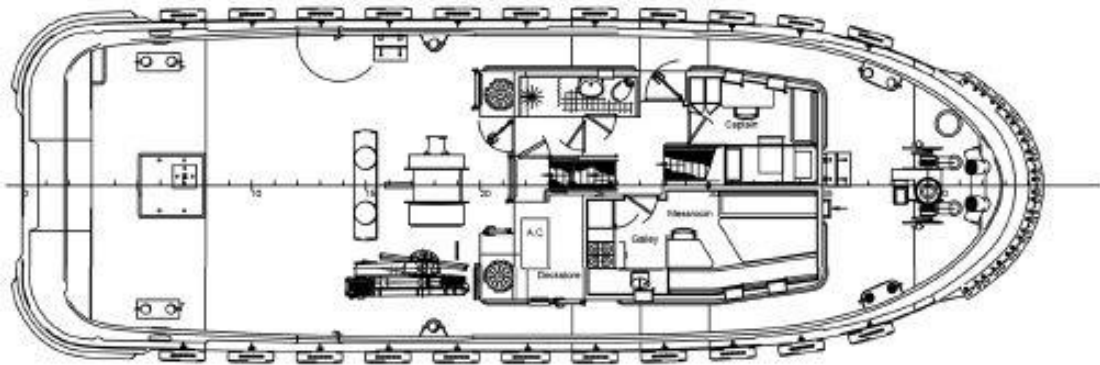












Below Maindeck