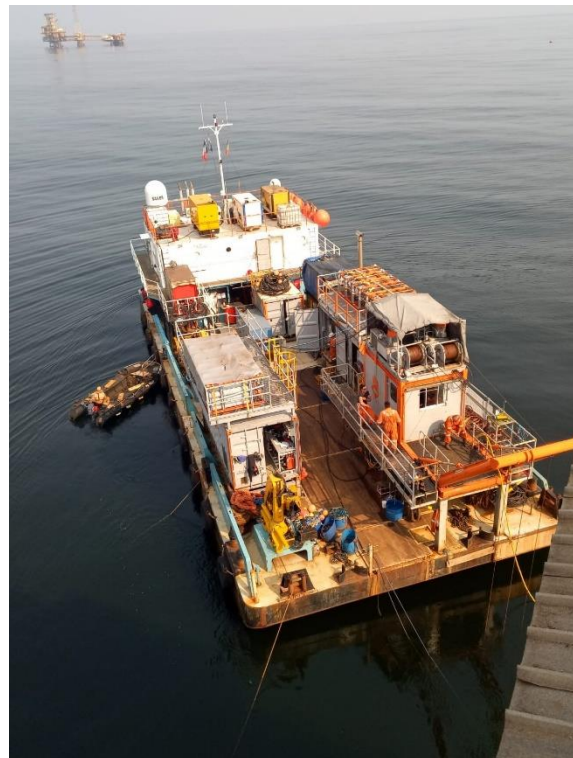


Type	Diving support / 6 point mooring / offshore barge	
Built	2013	
Dimensions	30.00 x 11.20 x 2.5 mtrs	
Draft	0.80 – 1.50 mtrs	
Tonnage	Gross 274 / Net 82	
Light ship weight	222 tons	
Clear deck area	180 m <sup>2</sup>	
Deck capacity	6 ts/m <sup>2</sup>	
Deck cargo capacity	Max. 130 tons	
Generator set	103 kVA, 110 kVA	
Electric system	24 / 220 V / 380 V	
Generator hydraulic	2x diesel power pack, 78 kW each	
Deck equipment	Hydraulic crane – forward, Fassi F245, 1625 kg at 12,25 mtrs Hydraulic crane – aft, Fassi F245, 1625 kg at 12,25 mtrs 6x Mooring winch, P=7 tons, H=14 tons (600 m) Boat landing: yes	
Tank capacities	Fuel oil	10 m <sup>3</sup>
	Fresh water	100 m <sup>3</sup>
	Sewage	4 m <sup>3</sup>
Accommodation	Two cabins for with 4 berths each, 1 double berth cabin, mess-room and ship's office. Air-conditioning and heating.	
Communication	VHF, AIS, VSAT	
Class	Bureau Veritas I ✱Hull Pontoon Unrestricted Navigation, unmanned towing. Manned working at sea up to 60 miles.	
Survey status	Next special survey July 2023	
Latest dry docking	2017	
Position	Europe	











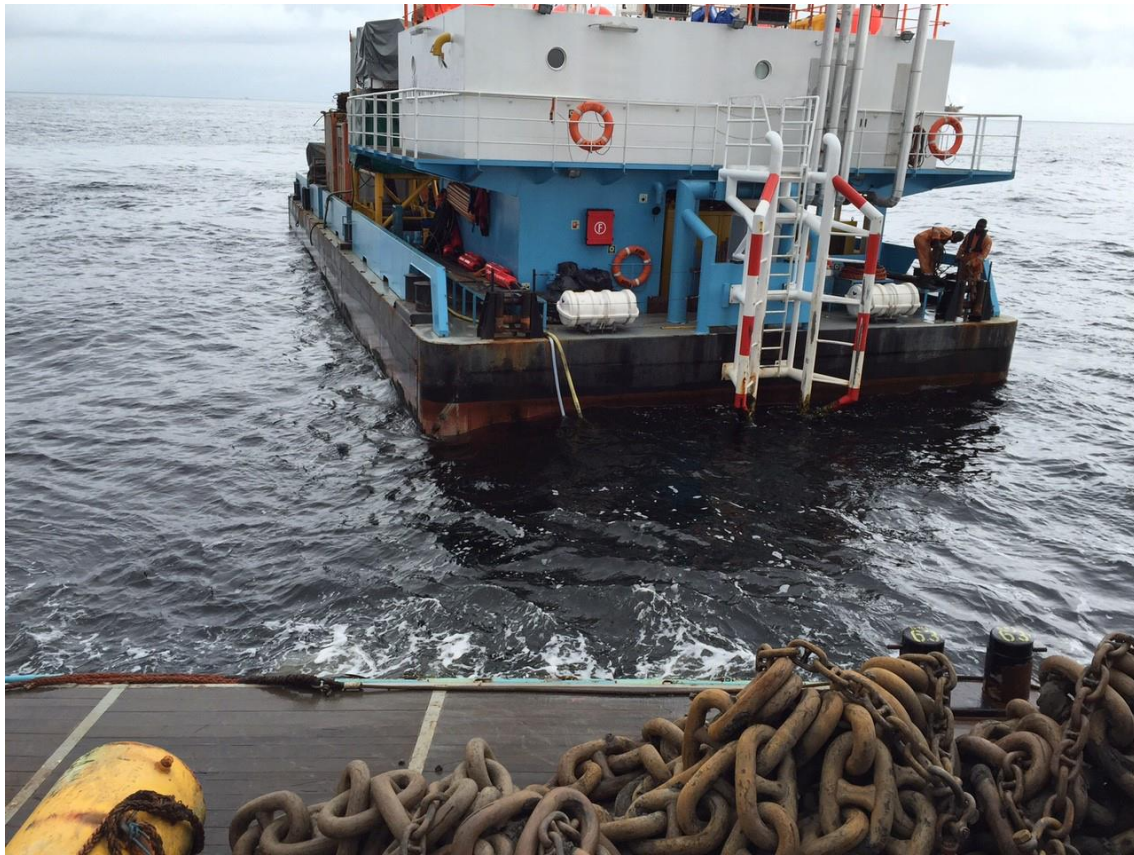








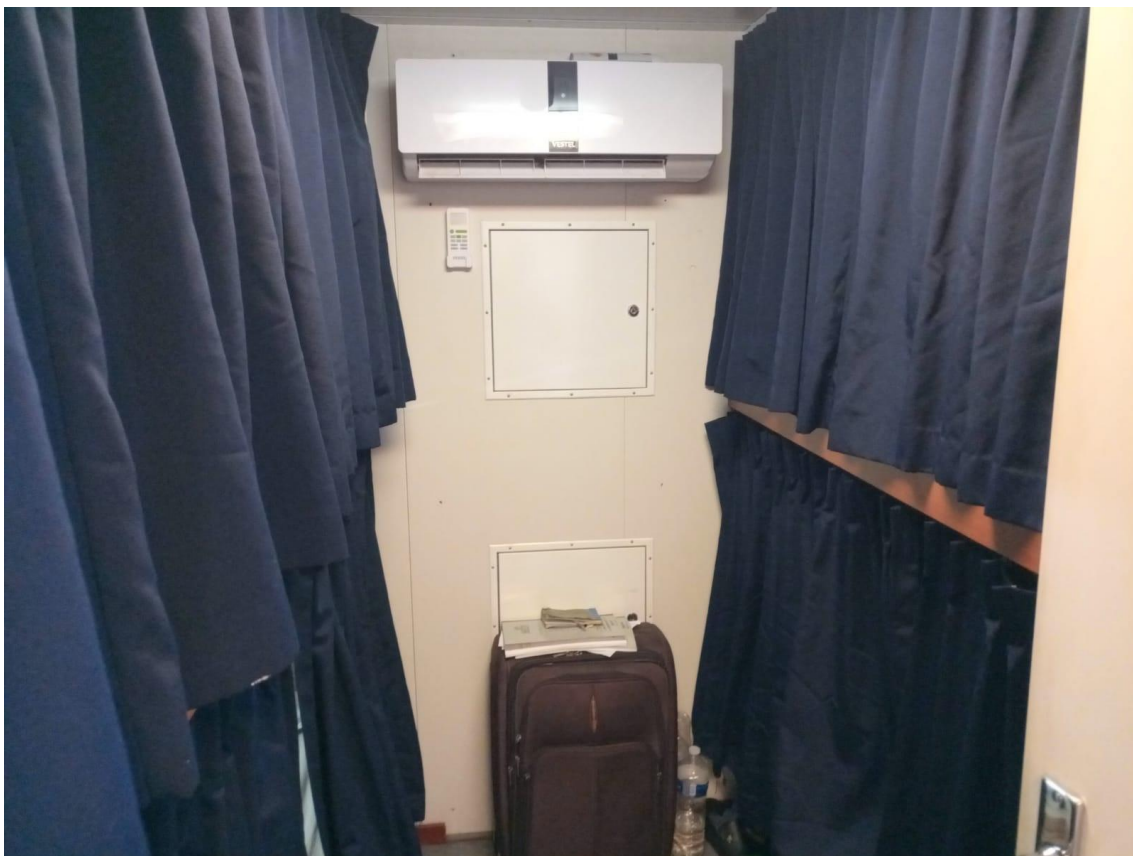




















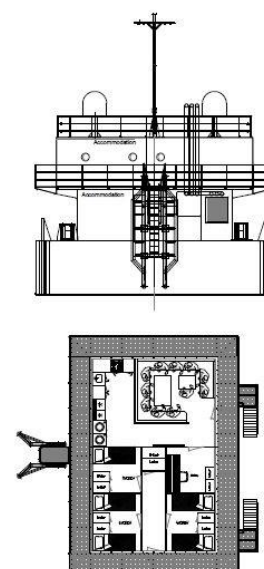
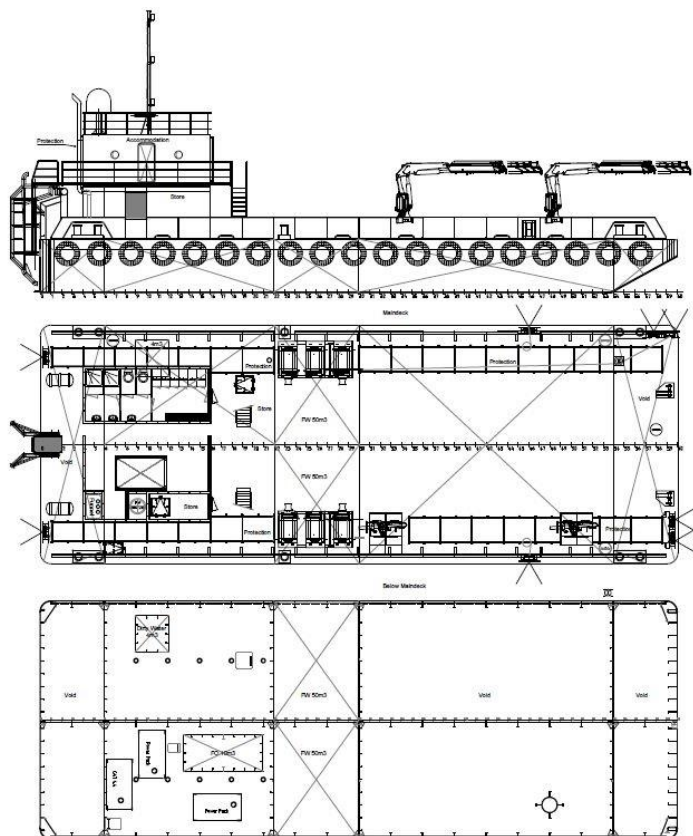












#### PRINCIPAL CHARACTERISTIC

Length mld 30.00 m  
 Beam 11.20 m  
 Depth 2.55 m  
 Classification Bureau Veritas Register  
 Portwork Unrestricted navigation unlimited towing  
 Planned working at sea up to 60 miles