

*Do not let age guide you, these sister ferries are ready for many more years of operation. Vessels are in various states of modernization, and all vessels are very well maintained according to a strict maintenance regime.*

Type	Inland river ferry (sisters available)
Built	1931-1935, the Netherlands
Dimensions	35.90 x 13.84 or 37.85 x 13.90 mtrs
Draft	3.37 or 3.39 mtrs
Hull material	Steel
Loading capacity	162 tons maximum
Propulsion	2x fixed pitch propellers
Main engine	Stork Werkspoor (now Wartsila), type DR 218
Output	419 hp at 750 RPM
Speed	5.5 knots average
Steering equipment	2x Rudders
Aux. engines	2x DAF DF 625 M
Output	60 kVA each at 380V / 50Hz
Aux. equipment	2x Anchors with anchor winches 2x Ramps with hydraulic systems Buderus heating system
Passenger capacity	160 passengers + vehicles
Nav./comm. equipment	1x VHF, 2x searchlight, 2x river radar, AIS,
Class	Register Holland (Dutch class and flag)
Survey status	Inland certification (acc. ES-TRIN) valid 2022-2024
Remark	Vessels are in various states of modernization, and all vessels are very well maintained according to a strict maintenance regime. Thickness measurement reports 2018-2019 available. Hull thickness well in order. Asbestos inventory report available (99% sanitized). Paint inspection report available.





















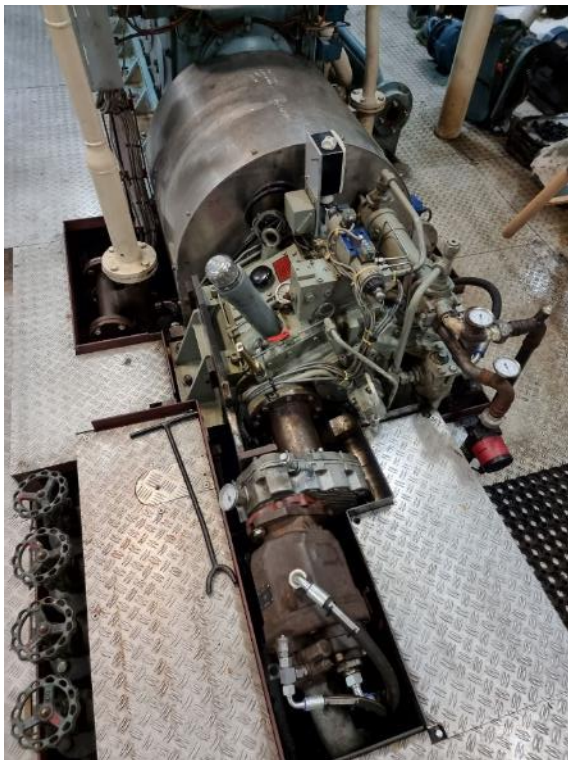
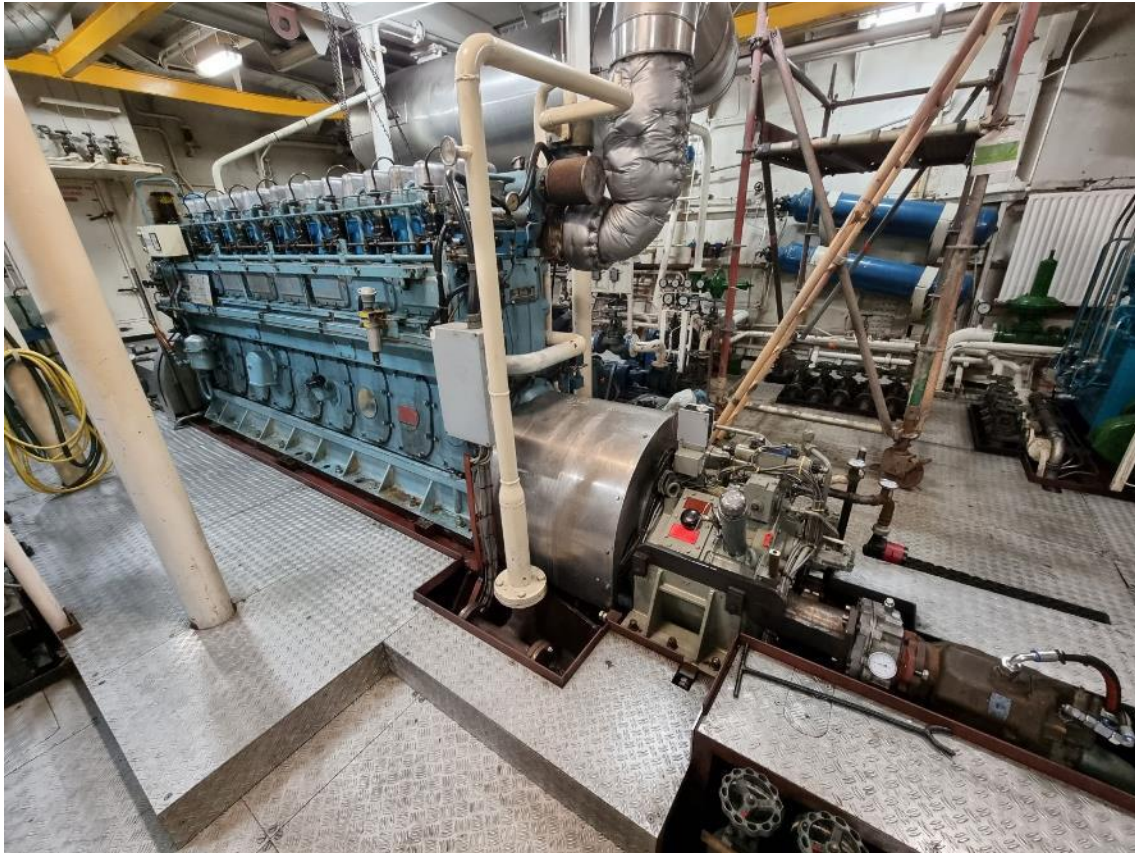












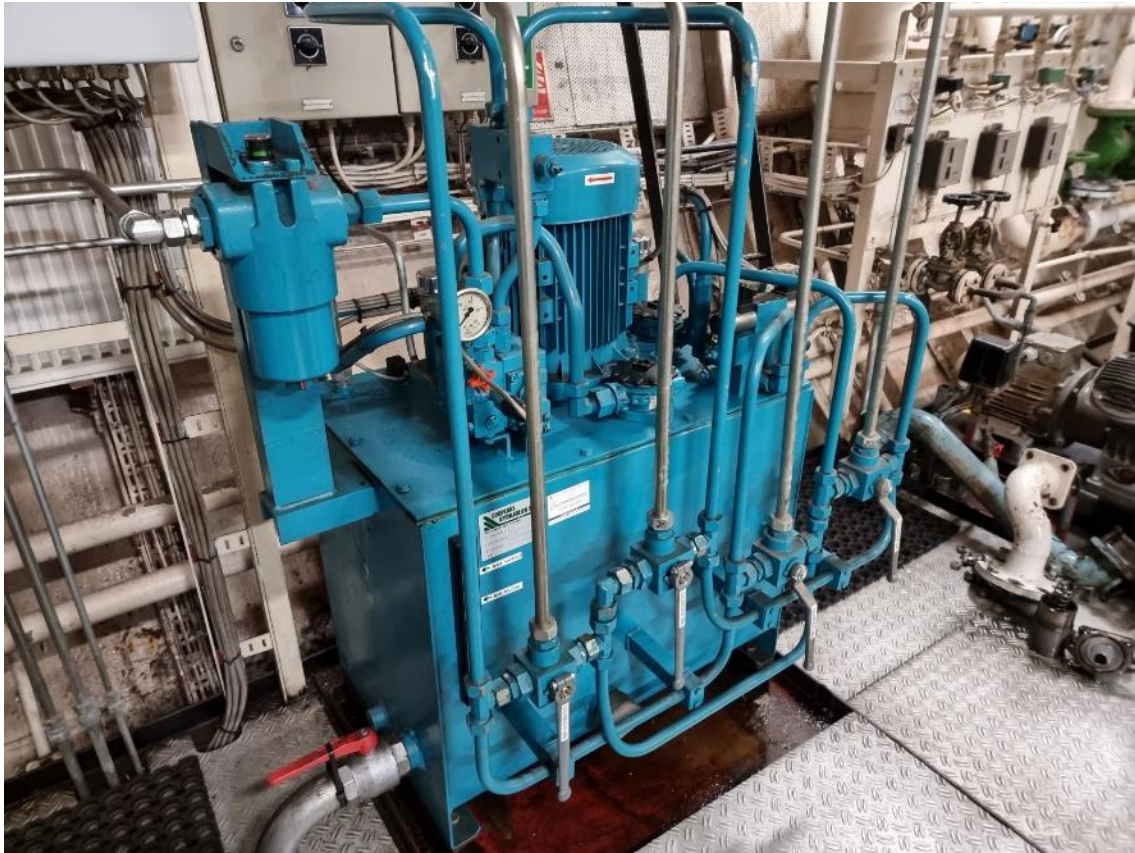


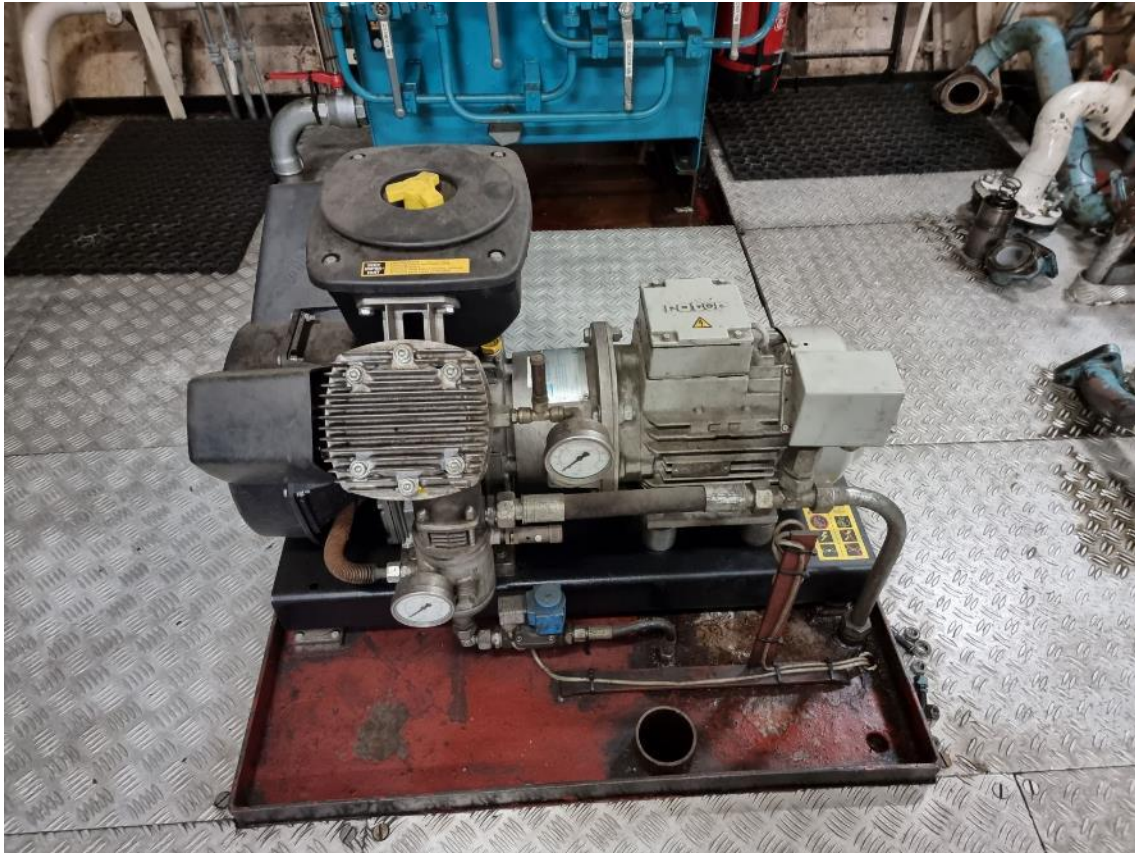












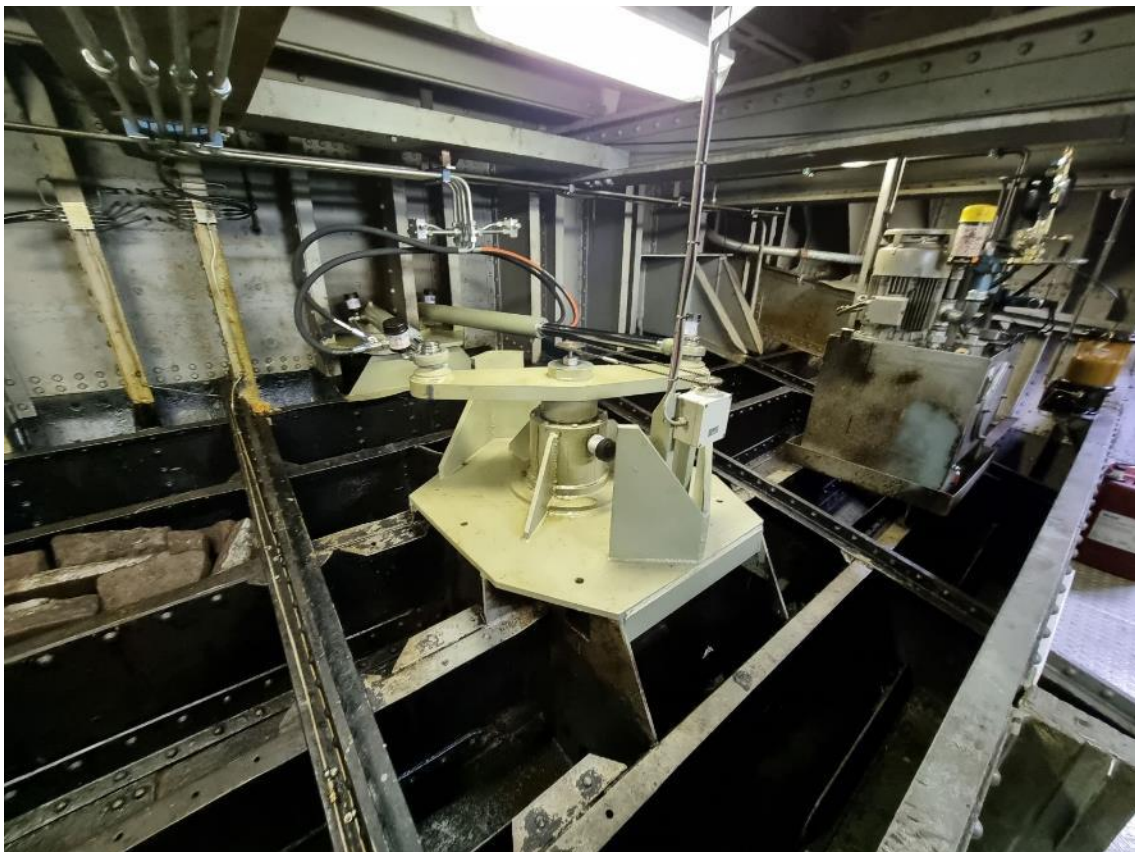








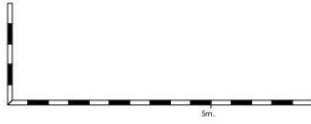
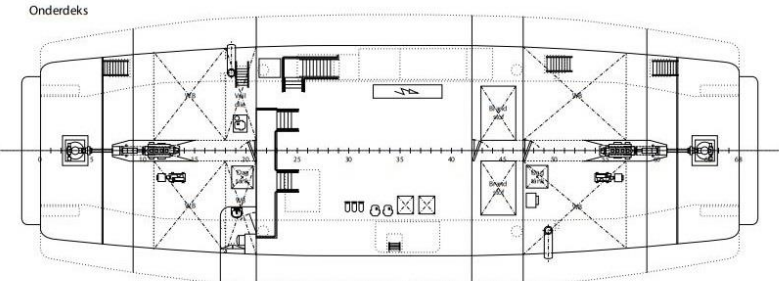
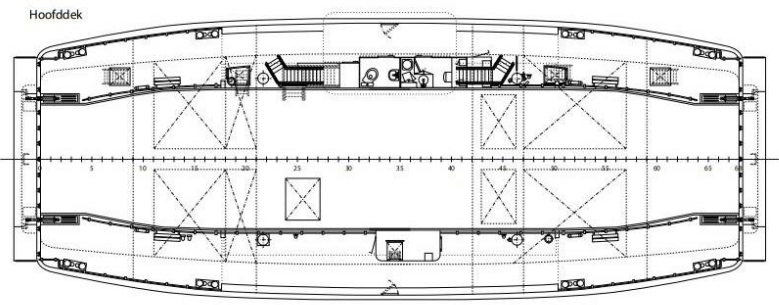
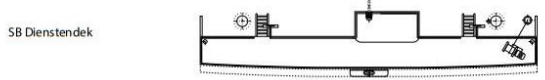
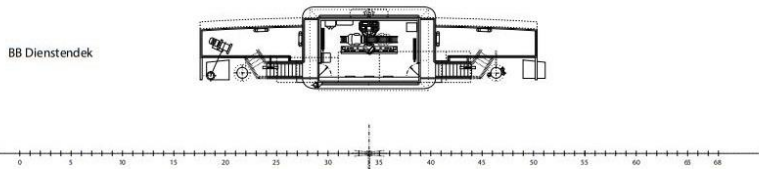
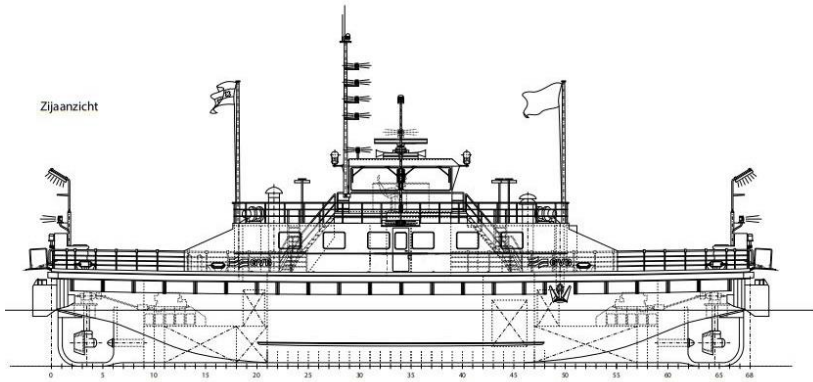




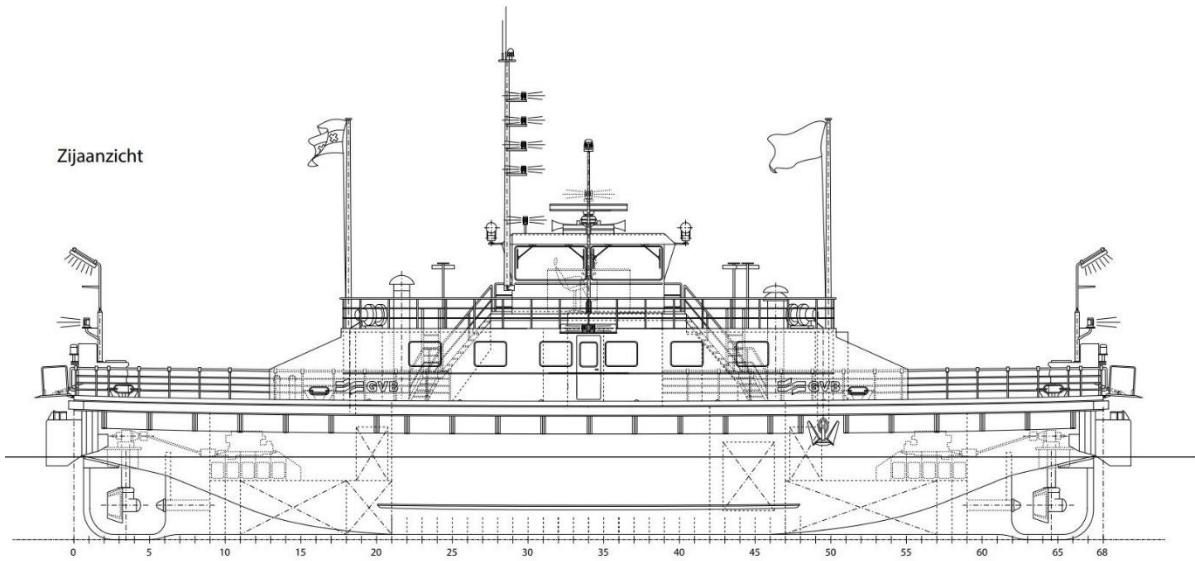




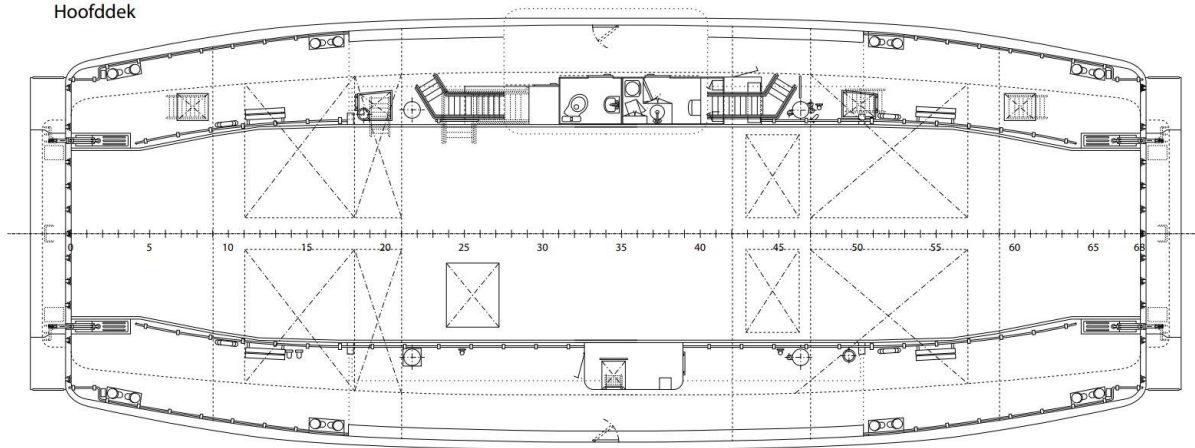
INLAND RIVER FERRY



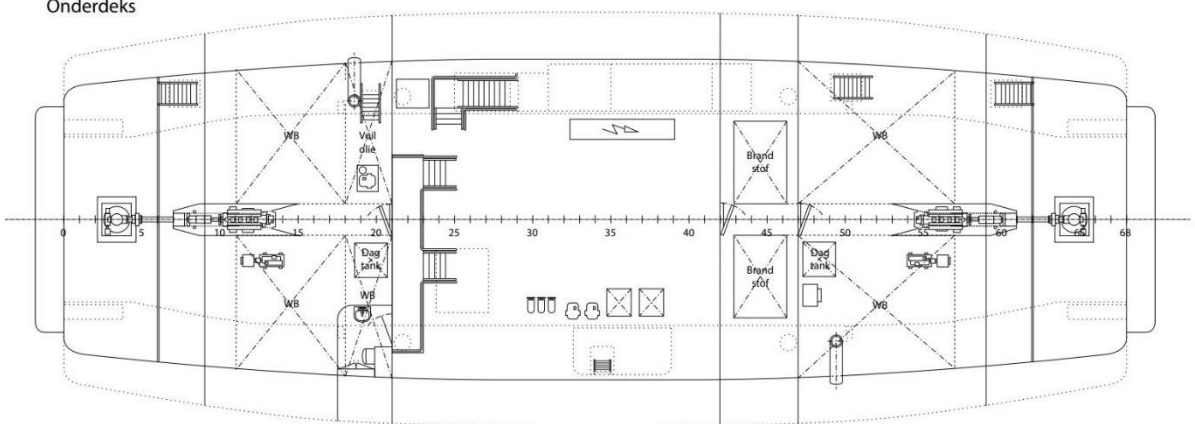
Zijaanzicht



Hoofddek



Onderdeks



Vooranzicht

