

DAMEN STAN PONTOON 9127

"524700"

GENERAL

Typical applications	Deck Cargo, RoRo Cargo
Typical area of operation	Deep sea, Coastal waters, Harbours, Inland waters
Classification	Lloyd's Register +100 AT, Pontoon, Strengthened for deck load of 20 t/m ² , Bottom strengthened for Loading and Unloading Aground, *IWS

DIMENSIONS

Length moulded	91,50 m
Beam moulded	27,40 m
Depth moulded	6,10 m
Draught max.	4,83 m
Free deck space	2.490 m
Deadweight max.	9.300 ton

CAPACITIES

Deck load	20 ton/m ²
Deck thickness	20 mm extra heavy deck

ARRANGEMENT

Lashing store	On PS and SB a lashing store is located for storing equipment
Safety	All spaces provided with emergency esc
Life saving	2 life buoys
Fifi	2 fire extinguishers

DESIGN CONDITIONS

Sea water temperature	-0° to +35° C
Outside air temperature	-5° to +45° C

STANDARD EXECUTION

Towing brackets	One on PS and one on SB at foredeck
Fair leads	At the foreside of the towing brackets
Bollards	6 pcs. standard, insert plates at every section
Draught marks	At fore, mid and aft on PS and SB every 20 cm.
Boarding ladders	2 on SB and 2 on PS in recesses of the hull
Cathodic protection	Zinc anodes on underwater part of the hull
Manholes	Flush bolted manholes
Entry / Escape	Gas-spring hatch on coming and easy escape manhole for lashing stores
Hatches	Both lashing stores have a large flush-bolted hatch
Emergency towing	Flush mounted towing connection in the bow
Ramp recess	RoRo ramp recess at bow (10 x 1.5m) and stern (14 x 1.5 m)
Lifting eyes	Four lifting eyes flush with main deck and covered with bolted steel plates to lift the pontoon

OPTIONAL EQUIPMENT (PLUG AND PLAY)

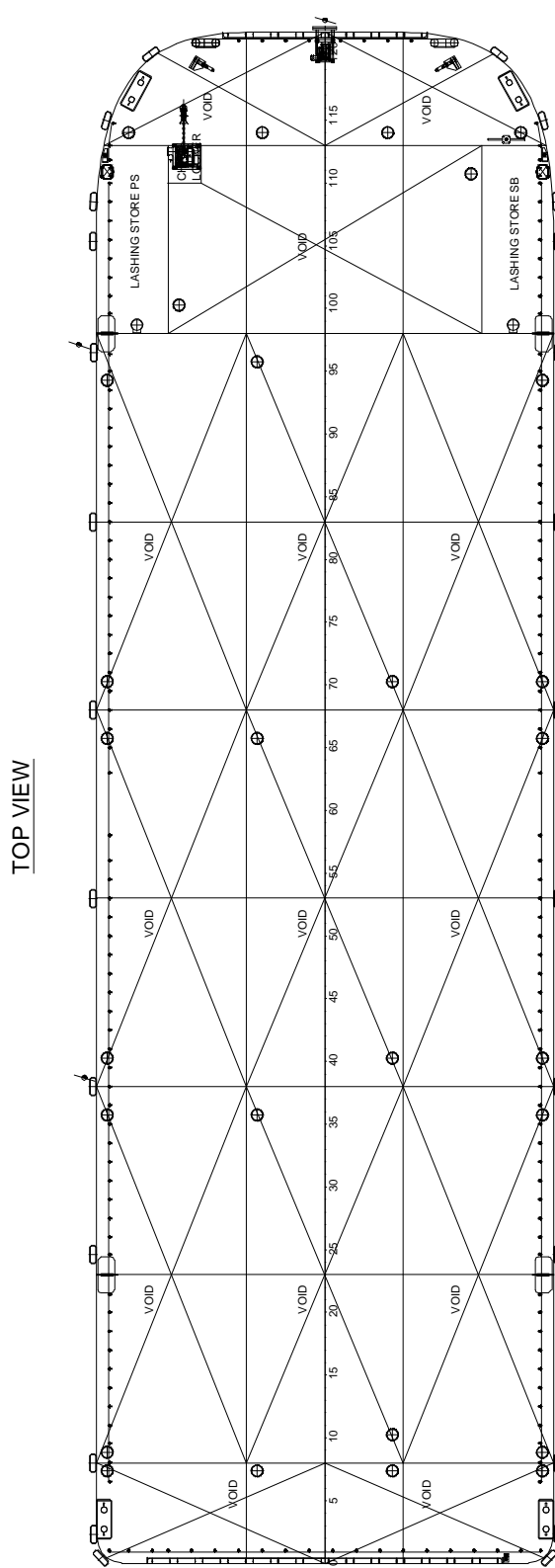
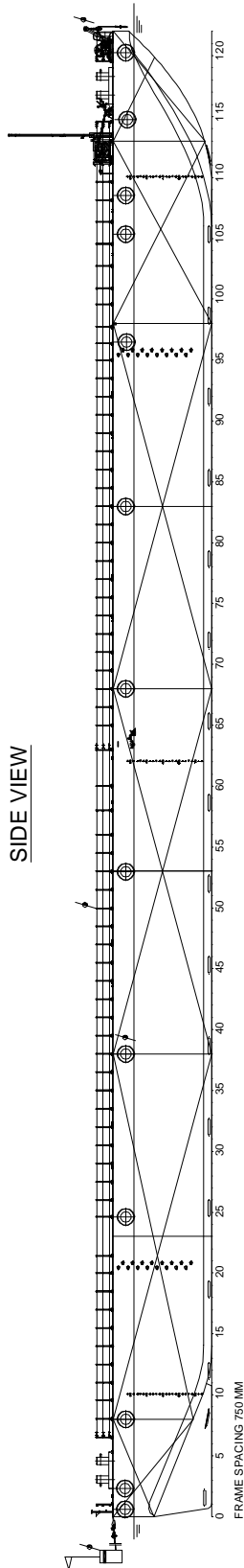
Fendering	Tyre fender system
Towing arrangement	Chains and towing bridle
Emergency towing	Emergency towing wire with buoy
Recovery winch	At the bow for retrieval of towing bridle
Navigation lighting	Navigation lights according to the standard for international towage
Anti-fouling	Anti-fouling paint system
Railing	Removable stanchions with wire guard rails
Ramp panels	1.5 meter width and 8 meter length
Anchor / Mooring system	On foreship one anchor/mooring winch is equipped with warping head, mooring lines, anchor and chains
Emergency anchor	At the stern on sliding ramp

* Mentioned deadweight is calculated and excluding optional equipment.

* Picture shows an Artist Impression of a Stan Pontoon B27 with full option package

DAMEN STAN PONTOON 9127

"524700"



DAMEN SHIPYARDS GROUP

Avelingen-West 20
4202 MS Gorinchem
The Netherlands

P.O. Box 1
4200 AA Gorinchem
The Netherlands

phone +31 (0)183 63 99 22
fax +31 (0)183 63 21 89

info@damen.com
www.damen.com